

Datasheet for ABIN650899
anti-SEC24A antibody (AA 636-663)[Go to Product page](#)

2 Images

Overview

Quantity:	400 µL
Target:	SEC24A
Binding Specificity:	AA 636-663
Reactivity:	Human
Host:	Rabbit
Clonality:	Polyclonal
Conjugate:	This SEC24A antibody is un-conjugated
Application:	Western Blotting (WB), Immunohistochemistry (Paraffin-embedded Sections) (IHC (p))

Product Details

Immunogen:	This SC24A antibody is generated from rabbits immunized with a KLH conjugated synthetic peptide between 636-663 amino acids from the Central region of human SC24A.
Clone:	RB24813
Isotype:	Ig Fraction
Purification:	This antibody is purified through a protein A column, followed by peptide affinity purification.

Target Details

Target:	SEC24A
Alternative Name:	SC24A (SEC24A Products)
Background:	SC24A is a component of coat protein II (COPII, see MIM 601924)-coated vesicles that mediate

Target Details

protein transport from the endoplasmic reticulum. SEC24A is 1 of several mammalian proteins that show structural and functional homology to yeast Sec24.

Molecular Weight: 119749

Gene ID: 10802

NCBI Accession: [NP_001239160](#), [NP_068817](#)

UniProt: [O95486](#)

Application Details

Application Notes: WB: 1:1000. IHC-P: 1:50~100

Restrictions: For Research Use only

Handling

Format: Liquid

Buffer: Purified polyclonal antibody supplied in PBS with 0.09 % (W/V) sodium azide.

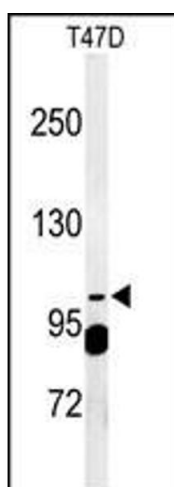
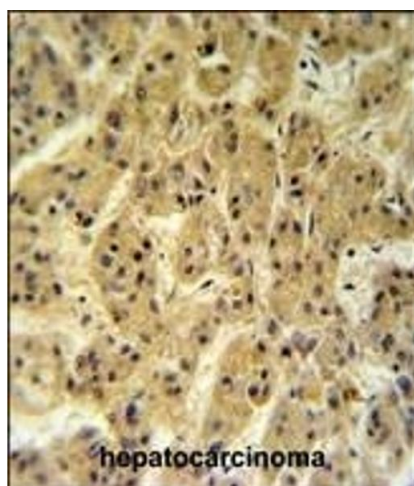
Preservative: Sodium azide

Precaution of Use: This product contains Sodium azide: a POISONOUS AND HAZARDOUS SUBSTANCE which should be handled by trained staff only.

Storage: 4 °C, -20 °C

Storage Comment: Maintain refrigerated at 2-8 °C for up to 6 months. For long term storage store at -20 °C in small aliquots to prevent freeze-thaw cycles.

Expiry Date: 6 months



Immunohistochemistry (Paraffin-embedded Sections)

Image 1. SC24A Antibody (Center) (ABIN650899 and ABIN2839987) IHC analysis in formalin fixed and paraffin embedded hepatocarcinoma followed by peroxidase conjugation of the secondary antibody and DAB staining. This data demonstrates the use of the SC24A Antibody (Center) for immunohistochemistry. Clinical relevance has not been evaluated.

Western Blotting

Image 2. Western blot analysis of SC24A Antibody (Center) (ABIN650899 and ABIN2839987) in T47D cell line lysates (35 µg/lane). SC24A (arrow) was detected using the purified Pab.