



[Go to Product page](#)

Datasheet for ABIN650904

anti-PNPLA8 antibody (N-Term)

2 Images

Overview

Quantity:	400 µL
Target:	PNPLA8
Binding Specificity:	AA 212-240, N-Term
Reactivity:	Human
Host:	Rabbit
Clonality:	Polyclonal
Conjugate:	This PNPLA8 antibody is un-conjugated
Application:	Western Blotting (WB), Flow Cytometry (FACS)

Product Details

Immunogen:	This PNPLA8 antibody is generated from rabbits immunized with a KLH conjugated synthetic peptide between 212-240 amino acids from the N-terminal region of human PNPLA8.
Clone:	RB24901
Isotype:	Ig Fraction
Purification:	This antibody is purified through a protein A column, followed by peptide affinity purification.

Target Details

Target:	PNPLA8
Alternative Name:	PNPLA8 (PNPLA8 Products)
Background:	PNPLA8 catalyzes cleavage of fatty acids from phospholipids, thereby regulating membrane

Target Details

physical properties and the release of lipid second messengers and growth factors. Phospholipase A2 activity also modulates cellular growth programs, inflammation, and ion channel function.

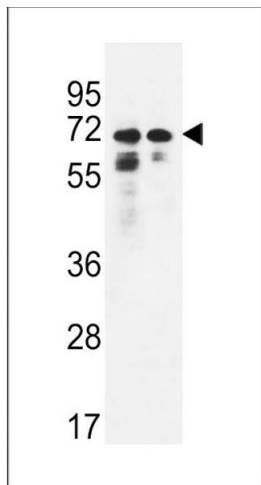
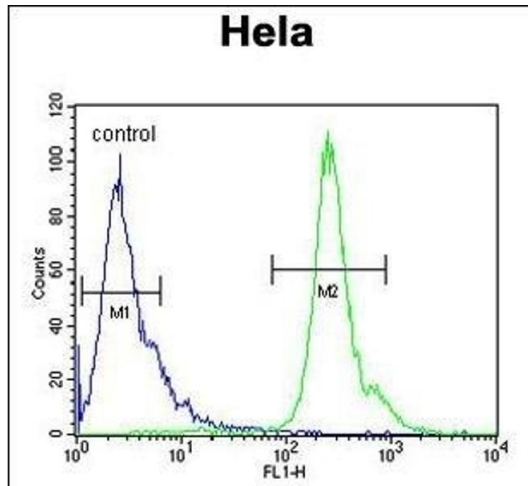
Molecular Weight:	88477
Gene ID:	50640
NCBI Accession:	NP_001242936 , NP_001242937 , NP_001242938 , NP_001242939 , NP_001242940 , NP_056538
UniProt:	Q9NP80

Application Details

Application Notes:	WB: 1:1000. FC: 1:10~50
Restrictions:	For Research Use only

Handling

Format:	Liquid
Buffer:	Purified polyclonal antibody supplied in PBS with 0.09 % (W/V) sodium azide.
Preservative:	Sodium azide
Precaution of Use:	This product contains Sodium azide: a POISONOUS AND HAZARDOUS SUBSTANCE which should be handled by trained staff only.
Storage:	4 °C, -20 °C
Storage Comment:	Maintain refrigerated at 2-8 °C for up to 6 months. For long term storage store at -20 °C in small aliquots to prevent freeze-thaw cycles.
Expiry Date:	6 months



Flow Cytometry

Image 1. PNPLA8 Antibody (N-term) (ABIN650904 and ABIN2839989) flow cytometric analysis of HeLa cells (right histogram) compared to a negative control cell (left histogram). FITC-conjugated goat-anti-rabbit secondary antibodies were used for the analysis.

Western Blotting

Image 2. PNPLA8 Antibody (N-term) (ABIN650904 and ABIN2839989) western blot analysis in HeLa, K562 cell line lysates (35 µg/lane). This demonstrates the PNPLA8 antibody detected the PNPLA8 protein (arrow).