



[Go to Product page](#)

Datasheet for ABIN650909
anti-LUZP1 antibody (C-Term)

2 Images

Overview

Quantity:	400 µL
Target:	LUZP1
Binding Specificity:	AA 1042-1070, C-Term
Reactivity:	Human
Host:	Rabbit
Clonality:	Polyclonal
Conjugate:	This LUZP1 antibody is un-conjugated
Application:	Western Blotting (WB), Flow Cytometry (FACS)

Product Details

Immunogen:	This LUZP1 antibody is generated from rabbits immunized with a KLH conjugated synthetic peptide between 1042-1070 amino acids from the C-terminal region of human LUZP1.
Clone:	RB24935
Isotype:	Ig Fraction
Purification:	This antibody is purified through a protein A column, followed by peptide affinity purification.

Target Details

Target:	LUZP1
Alternative Name:	LUZP1 (LUZP1 Products)
Background:	LUZP1 encodes a protein that contains a leucine zipper motif. The exact function of the

Target Details

encoded protein is not known. In mice this gene affects neural tube closure.

Molecular Weight: 120275

Gene ID: 7798

NCBI Accession: [NP_001136018](#), [NP_361013](#)

UniProt: [Q86V48](#)

Pathways: [Tube Formation](#)

Application Details

Application Notes: WB: 1:1000. FC: 1:10~50

Restrictions: For Research Use only

Handling

Format: Liquid

Buffer: Purified polyclonal antibody supplied in PBS with 0.09 % (W/V) sodium azide.

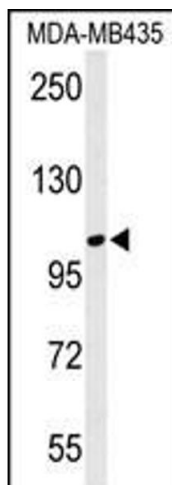
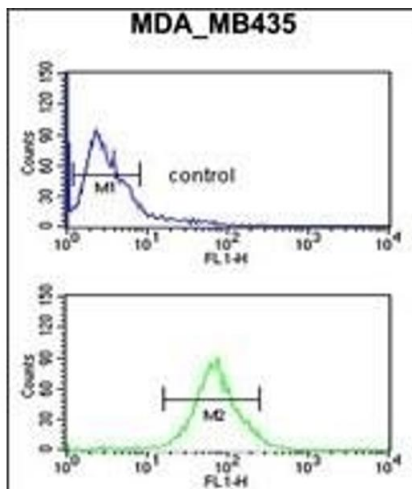
Preservative: Sodium azide

Precaution of Use: This product contains Sodium azide: a POISONOUS AND HAZARDOUS SUBSTANCE which should be handled by trained staff only.

Storage: 4 °C,-20 °C

Storage Comment: Maintain refrigerated at 2-8 °C for up to 6 months. For long term storage store at -20 °C in small aliquots to prevent freeze-thaw cycles.

Expiry Date: 6 months



Flow Cytometry

Image 1. LUZP1 Antibody (C-term) (ABIN650909 and ABIN2839991) flow cytometric analysis of MDA-M cells (bottom histogram) compared to a negative control cell (top histogram). FITC-conjugated goat-anti-rabbit secondary antibodies were used for the analysis.

Western Blotting

Image 2. Western blot analysis of LUZP1 Antibody (C-term) (ABIN650909 and ABIN2839991) in MDA-M cell line lysates (35 µg/lane). LUZP1 (arrow) was detected using the purified Pab.