

Datasheet for ABIN650914
anti-ATL3 antibody (AA 217-245)[Go to Product page](#)

2 Images

Overview

Quantity:	400 µL
Target:	ATL3
Binding Specificity:	AA 217-245
Reactivity:	Human, Mouse, Hamster
Host:	Rabbit
Clonality:	Polyclonal
Conjugate:	This ATL3 antibody is un-conjugated
Application:	Western Blotting (WB)

Product Details

Immunogen:	This ATL3 antibody is generated from rabbits immunized with a KLH conjugated synthetic peptide between 217-245 amino acids from the Central region of human ATL3.
Clone:	RB25696
Isotype:	Ig Fraction
Predicted Reactivity:	Rat
Purification:	This antibody is purified through a protein A column, followed by peptide affinity purification.

Target Details

Target:	ATL3
Alternative Name:	ATL3 (ATL3 Products)

Target Details

Background:	ATL3 is GTPase tethering membranes through formation of trans-homooligomer and mediating homotypic fusion of endoplasmic reticulum membranes. ATL3 is function in endoplasmic reticulum tubular network biogenesis.
-------------	---

Molecular Weight:	60542
-------------------	-------

Gene ID:	25923
----------	-------

NCBI Accession:	NP_056274
-----------------	---------------------------

UniProt:	Q6DD88
----------	------------------------

Application Details

Application Notes:	WB: 1:1000. WB: 1:1000
--------------------	------------------------

Restrictions:	For Research Use only
---------------	-----------------------

Handling

Format:	Liquid
---------	--------

Buffer:	Purified polyclonal antibody supplied in PBS with 0.09 % (W/V) sodium azide.
---------	--

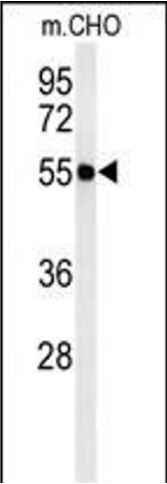
Preservative:	Sodium azide
---------------	--------------

Precaution of Use:	This product contains Sodium azide: a POISONOUS AND HAZARDOUS SUBSTANCE which should be handled by trained staff only.
--------------------	--

Storage:	4 °C, -20 °C
----------	--------------

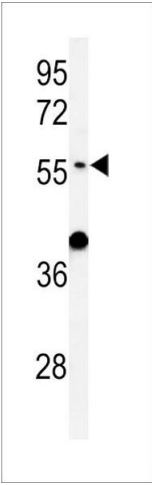
Storage Comment:	Maintain refrigerated at 2-8 °C for up to 6 months. For long term storage store at -20 °C in small aliquots to prevent freeze-thaw cycles.
------------------	--

Expiry Date:	6 months
--------------	----------



Western Blotting

Image 1. Western blot analysis of ATL3 Antibody (Center) (ABIN650914 and ABIN2839992) in CHO cell line lysates (35 µg/lane). ATL3 (arrow) was detected using the purified Pab.



Western Blotting

Image 2. Western blot analysis of ATL3 Antibody (Center) (ABIN650914 and ABIN2839992) in mouse liver tissue lysates (35 µg/lane). ATL3 (arrow) was detected using the purified Pab.