



Datasheet for ABIN650922  
**anti-A2ML1 antibody (N-Term)**



[Go to Product page](#)

2 Images

Overview

Quantity:	400 µL
Target:	A2ML1
Binding Specificity:	AA 345-373, N-Term
Reactivity:	Human, Mouse
Host:	Rabbit
Clonality:	Polyclonal
Conjugate:	This A2ML1 antibody is un-conjugated
Application:	Western Blotting (WB), Flow Cytometry (FACS)

Product Details

Immunogen:	This A2ML1 antibody is generated from rabbits immunized with a KLH conjugated synthetic peptide between 345-373 amino acids from the N-terminal region of human A2ML1.
Clone:	RB24981
Isotype:	Ig Fraction
Purification:	This antibody is purified through a protein A column, followed by peptide affinity purification.

Target Details

Target:	A2ML1
Alternative Name:	A2ML1 ( <a href="#">A2ML1 Products</a> )
Background:	A2ML1 is a new member of the alpha 2-macroglobulin protease inhibitor family, and shares

## Target Details

---

most the characteristics of this family. It is the first family member detected in the epidermis and may play an important role during desquamation by inhibiting extracellular proteases.

Molecular Weight: 161107

Gene ID: 144568

UniProt: [A8K2U0](#)

## Application Details

---

Application Notes: WB: 1:1000. FC: 1:10~50

Restrictions: For Research Use only

## Handling

---

Format: Liquid

Buffer: Purified polyclonal antibody supplied in PBS with 0.09 % (W/V) sodium azide.

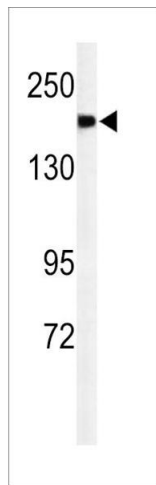
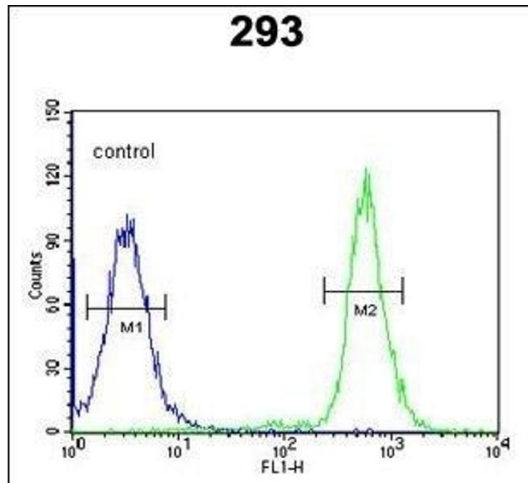
Preservative: Sodium azide

Precaution of Use: This product contains Sodium azide: a POISONOUS AND HAZARDOUS SUBSTANCE which should be handled by trained staff only.

Storage: 4 °C,-20 °C

Storage Comment: Maintain refrigerated at 2-8 °C for up to 6 months. For long term storage store at -20 °C in small aliquots to prevent freeze-thaw cycles.

Expiry Date: 6 months



### Flow Cytometry

**Image 1.** A2ML1 Antibody (N-term) (ABIN650922 and ABIN2839996) flow cytometric analysis of 293 cells (right histogram) compared to a negative control cell (left histogram). FITC-conjugated goat-anti-rabbit secondary antibodies were used for the analysis.

### Western Blotting

**Image 2.** Western blot analysis of A2ML1 Antibody (N-term) (ABIN650922 and ABIN2839996) in mouse lung tissue lysates (35 µg/lane). A2ML1 (arrow) was detected using the purified Pab.