



[Go to Product page](#)

Datasheet for ABIN650934

anti-CCDC130 antibody (AA 173-200)

3 Images

Overview

Quantity:	400 µL
Target:	CCDC130
Binding Specificity:	AA 173-200
Reactivity:	Human
Host:	Rabbit
Clonality:	Polyclonal
Conjugate:	This CCDC130 antibody is un-conjugated
Application:	Western Blotting (WB), Flow Cytometry (FACS), Immunohistochemistry (Paraffin-embedded Sections) (IHC (p))

Product Details

Immunogen:	This CC130 antibody is generated from rabbits immunized with a KLH conjugated synthetic peptide between 173-200 amino acids from the Central region of human CC130.
Clone:	RB25250
Isotype:	Ig Fraction
Purification:	This antibody is purified through a protein A column, followed by peptide affinity purification.

Target Details

Target:	CCDC130
Alternative Name:	CC130 (CCDC130 Products)

Target Details

Molecular Weight:	44802
Gene ID:	81576
NCBI Accession:	NP_110445
UniProt:	P13994

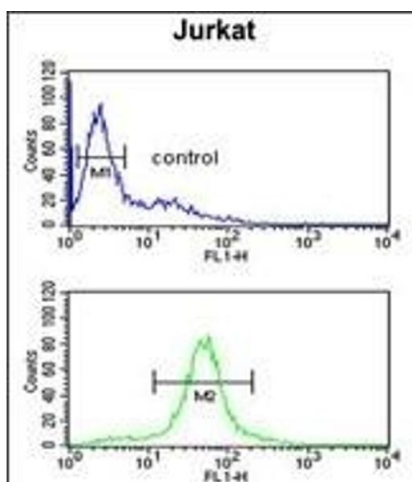
Application Details

Application Notes:	WB: 1:1000. IHC-P: 1:50~100. FC: 1:10~50
Restrictions:	For Research Use only

Handling

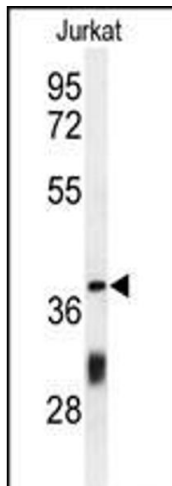
Format:	Liquid
Buffer:	Purified polyclonal antibody supplied in PBS with 0.09 % (W/V) sodium azide.
Preservative:	Sodium azide
Precaution of Use:	This product contains Sodium azide: a POISONOUS AND HAZARDOUS SUBSTANCE which should be handled by trained staff only.
Storage:	4 °C,-20 °C
Storage Comment:	Maintain refrigerated at 2-8 °C for up to 6 months. For long term storage store at -20 °C in small aliquots to prevent freeze-thaw cycles.
Expiry Date:	6 months

Images



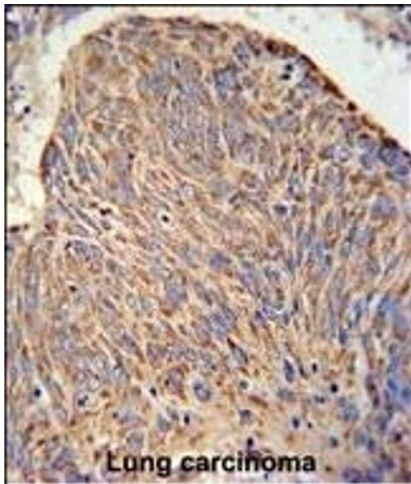
Flow Cytometry

Image 1. C Antibody (Center) (ABIN650934 and ABIN2840000) flow cytometric analysis of Jurkat cells (bottom histogram) compared to a negative control cell (top histogram). FITC-conjugated goat-anti-rabbit secondary antibodies were used for the analysis.



Western Blotting

Image 2. Western blot analysis of C Antibody (Center) (ABIN650934 and ABIN2840000) in Jurkat cell line lysates (35 µg/lane). C (arrow) was detected using the purified Pab.



Immunohistochemistry (Paraffin-embedded Sections)

Image 3. C Antibody (Center) (ABIN650934 and ABIN2840000) IHC analysis in formalin fixed and paraffin embedded human lung carcinoma followed by peroxidase conjugation of the secondary antibody and DAB staining. This data demonstrates the use of the C Antibody (Center) for immunohistochemistry. Clinical relevance has not been evaluated.