

Datasheet for ABIN650935
anti-RDH10 antibody (AA 106-135)[Go to Product page](#)

3 Images

Overview

Quantity:	400 µL
Target:	RDH10
Binding Specificity:	AA 106-135
Reactivity:	Human
Host:	Rabbit
Clonality:	Polyclonal
Conjugate:	This RDH10 antibody is un-conjugated
Application:	Western Blotting (WB), Flow Cytometry (FACS), Immunohistochemistry (Paraffin-embedded Sections) (IHC (p))

Product Details

Immunogen:	This RDH10 antibody is generated from rabbits immunized with a KLH conjugated synthetic peptide between 106-135 amino acids from the Central region of human RDH10.
Clone:	RB25251
Isotype:	Ig Fraction
Predicted Reactivity:	B, M, Rat
Purification:	This antibody is purified through a protein A column, followed by peptide affinity purification.

Target Details

Target:	RDH10
---------	-------

Target Details

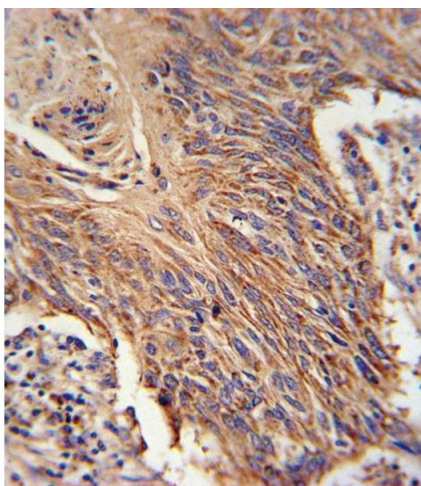
Alternative Name:	RDH10 (RDH10 Products)
Background:	RDH10 generates all-trans retinal from all-trans retinol and may play an important role in the photic visual cycle. All-trans retinal is isomerized to 11-cis retinal by the retinal G protein-coupled receptor (RGR, MIM 600342) when the retinal pigment epithelium (RPE) is illuminated.
Molecular Weight:	38087
Gene ID:	157506
NCBI Accession:	NP_742034
UniProt:	Q8IZV5

Application Details

Application Notes:	WB: 1:1000. IHC-P: 1:10~50. FC: 1:10~50
Restrictions:	For Research Use only

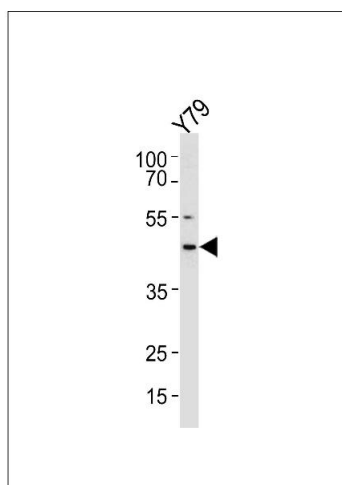
Handling

Format:	Liquid
Buffer:	Purified polyclonal antibody supplied in PBS with 0.09 % (W/V) sodium azide.
Preservative:	Sodium azide
Precaution of Use:	This product contains Sodium azide: a POISONOUS AND HAZARDOUS SUBSTANCE which should be handled by trained staff only.
Storage:	4 °C,-20 °C
Storage Comment:	Maintain refrigerated at 2-8 °C for up to 6 months. For long term storage store at -20 °C in small aliquots to prevent freeze-thaw cycles.
Expiry Date:	6 months



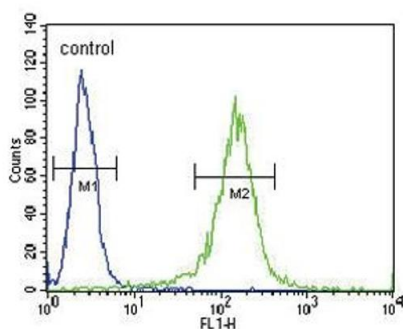
Immunohistochemistry (Paraffin-embedded Sections)

Image 1. RDH10 Antibody (Center) (ABIN650935 and ABIN2840001) immunohistochemistry analysis in formalin fixed and paraffin embedded lung carcinoma followed by peroxidase conjugation of the secondary antibody and DAB staining. This data demonstrates the use of the RDH10 Antibody (Center) for immunohistochemistry. Clinical relevance has not been evaluated.



Western Blotting

Image 2. RDH10 Antibody (Center) (ABIN650935 and ABIN2840001) western blot analysis in Y79 cell line lysates (35 µg/lane). This demonstrates the RDH10 antibody detected the RDH10 protein (arrow).



Flow Cytometry

Image 3. RDH10 Antibody (Center) (ABIN650935 and ABIN2840001) flow cytometric analysis of NCI- cells (right histogram) compared to a negative control cell (left histogram). FITC-conjugated goat-anti-rabbit secondary antibodies were used for the analysis.