

Datasheet for ABIN650946  
**anti-PARD6G antibody (N-Term)**[Go to Product page](#)

## 2 Images

## Overview

Quantity:	400 µL
Target:	PARD6G
Binding Specificity:	AA 18-47, N-Term
Reactivity:	Human
Host:	Rabbit
Clonality:	Polyclonal
Conjugate:	This PARD6G antibody is un-conjugated
Application:	Western Blotting (WB), Immunohistochemistry (Paraffin-embedded Sections) (IHC (p))

## Product Details

Immunogen:	This PAR6G antibody is generated from rabbits immunized with a KLH conjugated synthetic peptide between 18-47 amino acids from the N-terminal region of human PAR6G.
Clone:	RB25411
Isotype:	Ig Fraction
Purification:	This antibody is purified through a protein A column, followed by peptide affinity purification.

## Target Details

Target:	PARD6G
Alternative Name:	PAR6G ( <a href="#">PARD6G Products</a> )
Background:	PAR6G involved in asymmetrical cell division and cell polarization processes. PAR6G may play

## Target Details

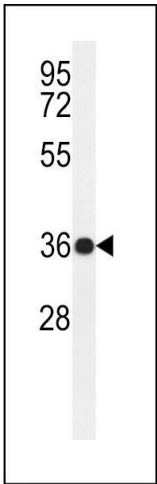
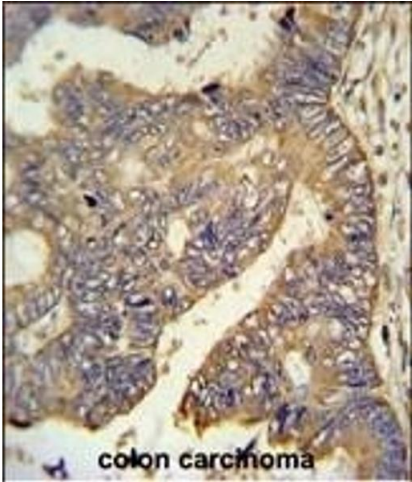
	a role in the formation of epithelial tight junctions. The PARD6-PARD3 complex links GTP-bound Rho small GTPases to atypical protein kinase C proteins.
Molecular Weight:	40883
Gene ID:	84552
NCBI Accession:	<a href="#">NP_115899</a>
UniProt:	<a href="#">Q9BYG4</a>
Pathways:	<a href="#">Cell-Cell Junction Organization</a>

## Application Details

Application Notes:	WB: 1:1000. IHC-P: 1:50~100
Restrictions:	For Research Use only

## Handling

Format:	Liquid
Buffer:	Purified polyclonal antibody supplied in PBS with 0.09 % (W/V) sodium azide.
Preservative:	Sodium azide
Precaution of Use:	This product contains Sodium azide: a POISONOUS AND HAZARDOUS SUBSTANCE which should be handled by trained staff only.
Storage:	4 °C,-20 °C
Storage Comment:	Maintain refrigerated at 2-8 °C for up to 6 months. For long term storage store at -20 °C in small aliquots to prevent freeze-thaw cycles.
Expiry Date:	6 months



**Immunohistochemistry (Paraffin-embedded Sections)**

**Image 1.** R6G Antibody (N-term) (ABIN650946 and ABIN2840004) IHC analysis in formalin fixed and raffin embedded human colon carcinoma followed by peroxidase conjugation of the secondary antibody and DAB staining. This data demonstrates the use of the R6G Antibody (N-term) for immunohistochemistry. Clinical relevance has not been evaluated.

**Western Blotting**

**Image 2.** Western blot analysis of R6G Antibody (N-term) (ABIN650946 and ABIN2840004) in ZR-75-1 cell line lysates (35 µg/lane). R6G (arrow) was detected using the purified b.