

Datasheet for ABIN650949
anti-PIGM antibody (C-Term)

3 Images

[Go to Product page](#)

Overview

Quantity:	400 µL
Target:	PIGM
Binding Specificity:	AA 394-423, C-Term
Reactivity:	Human
Host:	Rabbit
Clonality:	Polyclonal
Conjugate:	This PIGM antibody is un-conjugated
Application:	Western Blotting (WB), Flow Cytometry (FACS), Immunohistochemistry (Paraffin-embedded Sections) (IHC (p))

Product Details

Immunogen:	This PIGM antibody is generated from rabbits immunized with a KLH conjugated synthetic peptide between 394-423 amino acids from the C-terminal region of human PIGM.
Clone:	RB25415
Isotype:	Ig Fraction
Predicted Reactivity:	Pr
Purification:	This antibody is purified through a protein A column, followed by peptide affinity purification.

Target Details

Target:	PIGM
---------	------

Target Details

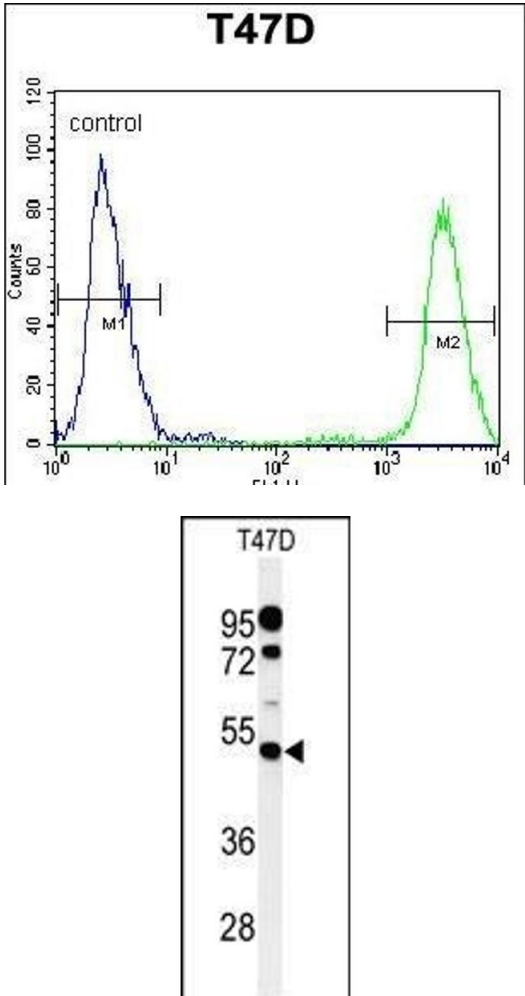
Alternative Name:	PIGM (PIGM Products)
Background:	PIGM encodes a transmembrane protein that is located in the endoplasmic reticulum and is involved in GPI-anchor biosynthesis. The glycosylphosphatidylinositol (GPI)-anchor is a glycolipid which contains three mannose molecules in its core backbone. The GPI-anchor is found on many blood cells and serves to anchor proteins to the cell surface. PIGM encodes a mannosyltransferase, GPI-MT-I, that transfers the first mannose to GPI on the luminal side of the endoplasmic reticulum.
Molecular Weight:	49460
Gene ID:	93183
NCBI Accession:	NP_660150
UniProt:	Q9H3S5
Pathways:	Inositol Metabolic Process , Cellular Glucan Metabolic Process

Application Details

Application Notes:	WB: 1:1000. IHC-P: 1:50~100. FC: 1:10~50
Restrictions:	For Research Use only

Handling

Format:	Liquid
Buffer:	Purified polyclonal antibody supplied in PBS with 0.09 % (W/V) sodium azide.
Preservative:	Sodium azide
Precaution of Use:	This product contains Sodium azide: a POISONOUS AND HAZARDOUS SUBSTANCE which should be handled by trained staff only.
Storage:	4 °C,-20 °C
Storage Comment:	Maintain refrigerated at 2-8 °C for up to 6 months. For long term storage store at -20 °C in small aliquots to prevent freeze-thaw cycles.
Expiry Date:	6 months

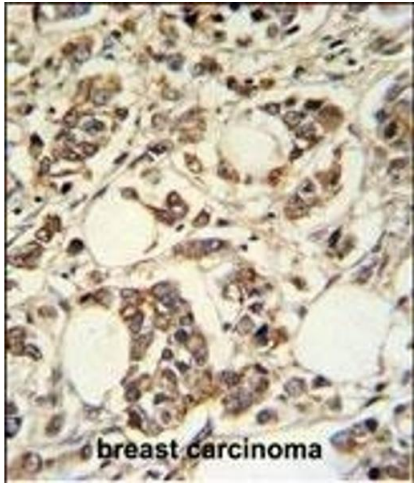


Flow Cytometry

Image 1. PIGM Antibody (C-term) (ABIN650949 and ABIN2840006) flow cytometric analysis of T47D cells (right histogram) compared to a negative control cell (left histogram). FITC-conjugated goat-anti-rabbit secondary antibodies were used for the analysis.

Western Blotting

Image 2. Western blot analysis of PIGM Antibody (C-term) (ABIN650949 and ABIN2840006) in T47D cell line lysates (35 µg/lane). PIGM (arrow) was detected using the purified Pab.



Immunohistochemistry (Paraffin-embedded Sections)

Image 3. PIGM Antibody (C-term) (ABIN650949 and ABIN2840006) IHC analysis in formalin fixed and paraffin embedded breast carcinoma followed by peroxidase conjugation of the secondary antibody and DAB staining. This data demonstrates the use of the PIGM Antibody (C-term) for immunohistochemistry. Clinical relevance has not been evaluated.