

Datasheet for ABIN650957

anti-CTC1 antibody (AA 767-795)[Go to Product page](#)**2** Images

Overview

Quantity:	400 µL
Target:	CTC1
Binding Specificity:	AA 767-795
Reactivity:	Human
Host:	Rabbit
Clonality:	Polyclonal
Conjugate:	This CTC1 antibody is un-conjugated
Application:	Western Blotting (WB), Flow Cytometry (FACS)

Product Details

Immunogen:	This CQ068 antibody is generated from rabbits immunized with a KLH conjugated synthetic peptide between 767-795 amino acids from the Central region of human CQ068.
Clone:	RB25502
Isotype:	Ig Fraction
Purification:	This antibody is purified through a protein A column, followed by peptide affinity purification.

Target Details

Target:	CTC1
Alternative Name:	CQ068 (CTC1 Products)
Background:	CQ068 is subunits of an alpha accessory factor (AAF) that stimulates the activity of DNA

Target Details

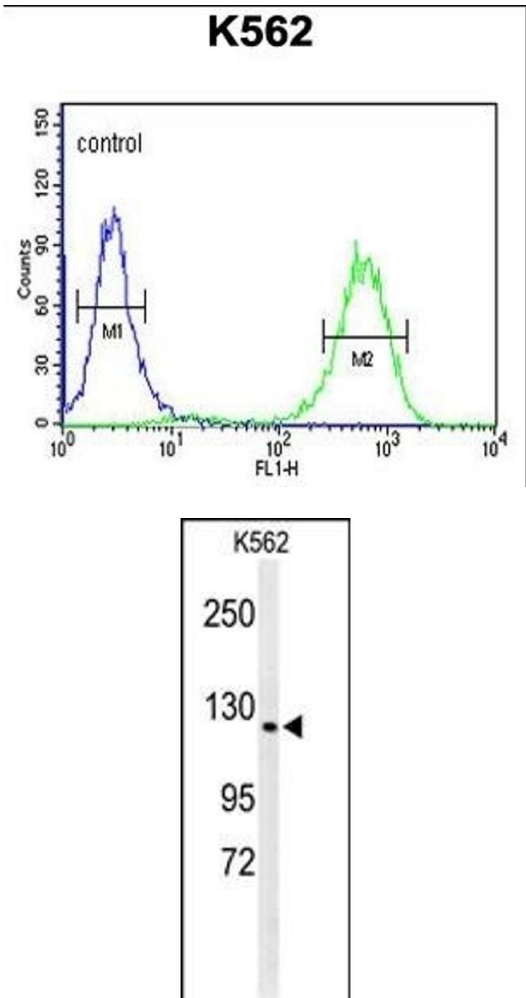
	polymerase-alpha-primase (see MIM 176636), the enzyme that initiates DNA replication. CQ068 also appears to function in a telomere-associated complex with OBFC1 and TEN1.
Molecular Weight:	134609
Gene ID:	80169
NCBI Accession:	NP_079375
UniProt:	Q2NKJ3

Application Details

Application Notes:	WB: 1:1000. FC: 1:10~50
Restrictions:	For Research Use only

Handling

Format:	Liquid
Buffer:	Purified polyclonal antibody supplied in PBS with 0.09 % (W/V) sodium azide.
Preservative:	Sodium azide
Precaution of Use:	This product contains Sodium azide: a POISONOUS AND HAZARDOUS SUBSTANCE which should be handled by trained staff only.
Storage:	4 °C,-20 °C
Storage Comment:	Maintain refrigerated at 2-8 °C for up to 6 months. For long term storage store at -20 °C in small aliquots to prevent freeze-thaw cycles.
Expiry Date:	6 months



Flow Cytometry

Image 1. C Antibody (Center) (ABIN650957 and ABIN2840010) flow cytometric analysis of K562 cells (right histogram) compared to a negative control cell (left histogram). FITC-conjugated goat-anti-rabbit secondary antibodies were used for the analysis.

Western Blotting

Image 2. Western blot analysis of C Antibody (Center) (ABIN650957 and ABIN2840010) in K562 cell line lysates (35 µg/lane). C (arrow) was detected using the purified Pab.