

Datasheet for ABIN650966
anti-CLEC2B antibody (AA 59-86)

2 Images

[Go to Product page](#)

Overview

Quantity:	400 µL
Target:	CLEC2B
Binding Specificity:	AA 59-86
Reactivity:	Human
Host:	Rabbit
Clonality:	Polyclonal
Conjugate:	This CLEC2B antibody is un-conjugated
Application:	Western Blotting (WB), Flow Cytometry (FACS)

Product Details

Immunogen:	This CLEC2B antibody is generated from rabbits immunized with a KLH conjugated synthetic peptide between 59-86 amino acids from the Central region of human CLEC2B.
Clone:	RB25715
Isotype:	Ig Fraction
Purification:	This antibody is purified through a protein A column, followed by peptide affinity purification.

Target Details

Target:	CLEC2B
Alternative Name:	CLEC2B (CLEC2B Products)
Background:	CLEC2B encodes a member of the C-type lectin/C-type lectin-like domain (CTL/CTLD)

Target Details

superfamily. Members of this family share a common protein fold and have diverse functions, such as cell adhesion, cell-cell signalling, glycoprotein turnover, and roles in inflammation and immune response. The encoded type 2 transmembrane protein may function as a cell activation antigen.

Molecular Weight: 17307

Gene ID: 9976

NCBI Accession: [NP_005118](#)

UniProt: [Q92478](#)

Application Details

Application Notes: WB: 1:1000. FC: 1:10~50

Restrictions: For Research Use only

Handling

Format: Liquid

Buffer: Purified polyclonal antibody supplied in PBS with 0.09 % (W/V) sodium azide.

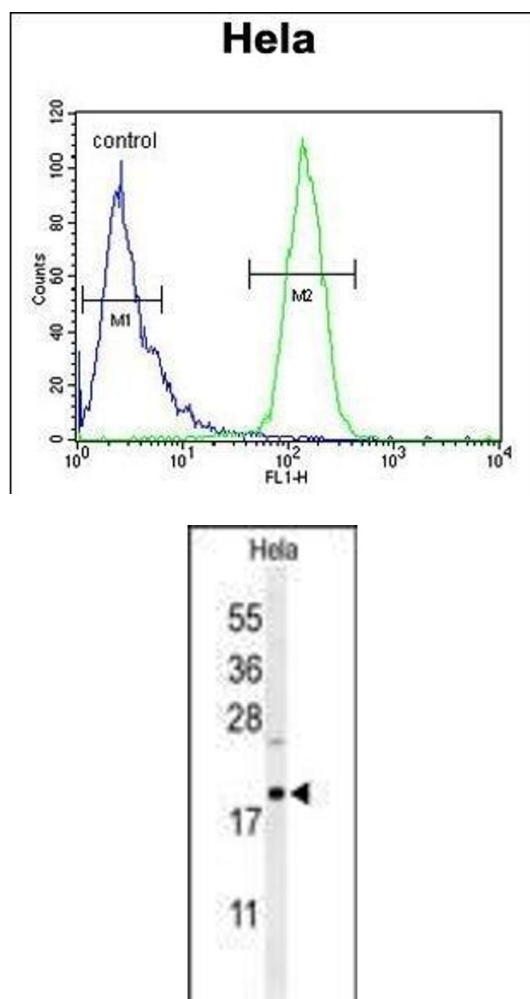
Preservative: Sodium azide

Precaution of Use: This product contains Sodium azide: a POISONOUS AND HAZARDOUS SUBSTANCE which should be handled by trained staff only.

Storage: 4 °C, -20 °C

Storage Comment: Maintain refrigerated at 2-8 °C for up to 6 months. For long term storage store at -20 °C in small aliquots to prevent freeze-thaw cycles.

Expiry Date: 6 months



Flow Cytometry

Image 1. CLEC2B Antibody (Center) (ABIN650966 and ABIN2840012) flow cytometric analysis of Hela cells (right histogram) compared to a negative control cell (left histogram). FITC-conjugated goat-anti-rabbit secondary antibodies were used for the analysis.

Western Blotting

Image 2. Western blot analysis of CLEC2B Antibody (Center) (ABIN650966 and ABIN2840012) in Hela cell line lysates (35 μ g/lane). CLEC2B (arrow) was detected using the purified Pab.