

Datasheet for ABIN650969
anti-SEC24C antibody (AA 443-470)[Go to Product page](#)

1 Image

Overview

Quantity:	400 µL
Target:	SEC24C
Binding Specificity:	AA 443-470
Reactivity:	Human
Host:	Rabbit
Clonality:	Polyclonal
Conjugate:	This SEC24C antibody is un-conjugated
Application:	Western Blotting (WB)

Product Details

Immunogen:	This SEC24C antibody is generated from rabbits immunized with a KLH conjugated synthetic peptide between 443-470 amino acids from the Central region of human SEC24C.
Clone:	RB25740
Isotype:	Ig Fraction
Purification:	This antibody is purified through a protein A column, followed by peptide affinity purification.

Target Details

Target:	SEC24C
Alternative Name:	SEC24C (SEC24C Products)
Background:	SEC24C is a member of the SEC24 subfamily of the SEC23/SEC24 family, which is involved in

Target Details

vesicle trafficking. The encoded protein has similarity to yeast Sec24p component of COPII. COPII is the coat protein complex responsible for vesicle budding from the ER. The product of this gene may play a role in shaping the vesicle, as well as in cargo selection and concentration.

Molecular Weight: 118325

Gene ID: 9632

NCBI Accession: [NP_004913](#), [NP_940999](#)

UniProt: [P53992](#)

Application Details

Application Notes: WB: 1:1000

Restrictions: For Research Use only

Handling

Format: Liquid

Buffer: Purified polyclonal antibody supplied in PBS with 0.09 % (W/V) sodium azide.

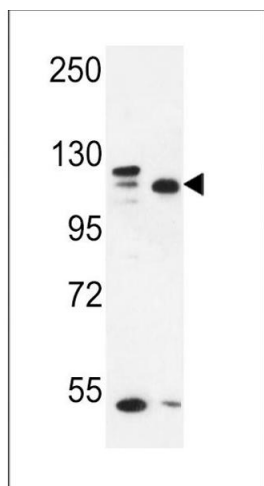
Preservative: Sodium azide

Precaution of Use: This product contains Sodium azide: a POISONOUS AND HAZARDOUS SUBSTANCE which should be handled by trained staff only.

Storage: 4 °C, -20 °C

Storage Comment: Maintain refrigerated at 2-8 °C for up to 6 months. For long term storage store at -20 °C in small aliquots to prevent freeze-thaw cycles.

Expiry Date: 6 months



Western Blotting

Image 1. SEC24C Antibody (Center) (ABIN650969 and ABIN2840015) western blot analysis in MDA-M, MCF-7 cell line lysates (35 µg/lane). This demonstrates the SEC24C antibody detected the SEC24C protein (arrow).