



Datasheet for ABIN650972  
**anti-HIF1A antibody (N-Term)**



[Go to Product page](#)

3 Images

1 Publication

### Overview

|                      |   |
|----------------------|---|
| Quantity:            | 400 µL  |
| Target:              | HIF1A   |
| Binding Specificity: | AA 1-30, N-Term   |
| Reactivity:          | Human, Hamster  |
| Host:                | Rabbit  |
| Clonality:           | Polyclonal  |
| Conjugate:           | This HIF1A antibody is un-conjugated  |
| Application:         | Western Blotting (WB), Immunofluorescence (IF), Immunohistochemistry (Paraffin-embedded Sections) (IHC (p)) |

### Product Details

|                       |   |
|-----------------------|---|
| Immunogen:            | This HIF1A antibody is generated from rabbits immunized with a KLH conjugated synthetic peptide between 1-30 amino acids from the N-terminal region of human HIF1A. |
| Clone:                | RB11679   |
| Isotype:              | Ig Fraction   |
| Predicted Reactivity: | B   |
| Purification:         | This antibody is prepared by Saturated Ammonium Sulfate (SAS) precipitation followed by dialysis against PBS.   |

### Target Details

|         |       |
|---------|-------|
| Target: | HIF1A |
|---------|-------|

## Target Details

---

Alternative Name: HIF1A ([HIF1A Products](#))

---

Background: Hypoxia-inducible factor-1 (HIF1) is a transcription factor found in mammalian cells cultured under reduced oxygen tension that plays an essential role in cellular and systemic homeostatic responses to hypoxia. HIF1 is a heterodimer composed of an alpha subunit and a beta subunit. The beta subunit has been identified as the aryl hydrocarbon receptor nuclear translocator (ARNT). This protein encodes the alpha subunit of HIF-1. Overexpression of a natural antisense transcript (aHIF) of this gene has been shown to be associated with nonpapillary renal carcinomas.

---

Molecular Weight: 92670

---

Gene ID: 3091

---

NCBI Accession: [NP\\_001230013](#), [NP\\_001521](#), [NP\\_851397](#)

---

UniProt: [Q16665](#)

---

Pathways: [Positive Regulation of Peptide Hormone Secretion](#), [Regulation of Hormone Metabolic Process](#), [Regulation of Hormone Biosynthetic Process](#), [Cellular Response to Molecule of Bacterial Origin](#), [Carbohydrate Homeostasis](#), [Transition Metal Ion Homeostasis](#), [Tube Formation](#), [Regulation of Carbohydrate Metabolic Process](#), [Signaling Events mediated by VEGFR1 and VEGFR2](#), [VEGFR1 Specific Signals](#), [Warburg Effect](#)

---

## Application Details

---

Application Notes: IF: 1:10~50. WB: 1:1000. IHC-P: 1:10~50

---

Restrictions: For Research Use only

---

## Handling

---

Format: Liquid

---

Buffer: Purified polyclonal antibody supplied in PBS with 0.09 % (W/V) sodium azide.

---

Preservative: Sodium azide

---

Precaution of Use: This product contains Sodium azide: a POISONOUS AND HAZARDOUS SUBSTANCE which should be handled by trained staff only.

---

Storage: 4 °C,-20 °C

---

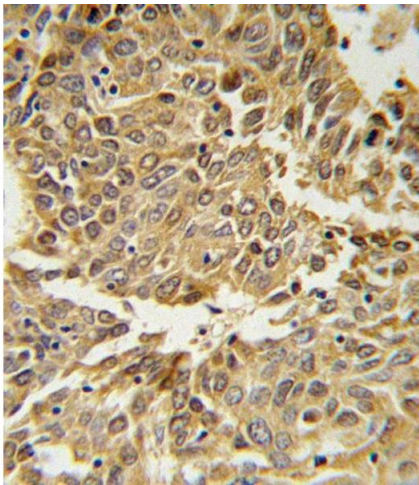
Storage Comment: Maintain refrigerated at 2-8 °C for up to 6 months. For long term storage store at -20 °C in small aliquots to prevent freeze-thaw cycles.

---

## Publications

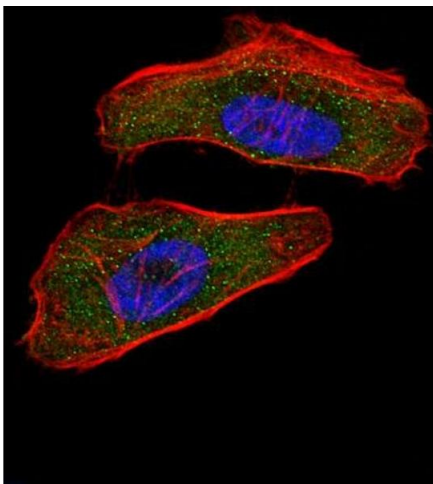
Product cited in: Smith, Wietgreffe, Shang, Reilly, Southern, Perkey, Duan, Kohler, Müller, Robinson, Carlis, Li, Johnson, Haase: "Live simian immunodeficiency virus vaccine correlate of protection: immune complex-inhibitory Fc receptor interactions that reduce target cell availability." in: **Journal of immunology (Baltimore, Md. : 1950)**, Vol. 193, Issue 6, pp. 3126-33, (2014) ([PubMed](#)).

## Images



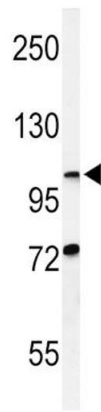
### Immunohistochemistry (Paraffin-embedded Sections)

**Image 1.** HIF1A Antibody (N-term) (ABIN650972 and ABIN2840017) IHC analysis in formalin fixed and paraffin embedded lung carcinoma followed by peroxidase conjugation of the secondary antibody and DAB staining. This data demonstrates the use of the HIF1A Antibody (N-term) for immunohistochemistry. Clinical relevance has not been evaluated.



### Immunofluorescence

**Image 2.** Fluorescent confocal image of HeLa cell stained with HIF1A Antibody (N-term) (ABIN650972 and ABIN2840017). HeLa cells were fixed with 4 % PFA (20 min), permeabilized with Triton X-100 (0.1 %, 10 min), then incubated with HIF1A primary antibody (1:25, 1 h at 37 °C). For secondary antibody, Alexa Fluor® 488 conjugated donkey anti-rabbit antibody (green) was used (1:400, 50 min at 37 °C). Cytoplasmic actin was counterstained with Alexa Fluor® 555 (red) conjugated Phalloidin (7 units/mL, 1 h at 37 °C). Nuclei were counterstained with DAPI (10 µg/mL, 10 min). HIF1A immunoreactivity is localized to cytoplasm and nucleus significantly.



### Western Blotting

**Image 3.** Western blot analysis of HIF1A Antibody (N-term) (ABIN650972 and ABIN2840017) in CHO cell line lysates (35 µg/lane). HIF1A (arrow) was detected using the purified Pab.