

Datasheet for ABIN650975  
**anti-BHLHE22 antibody (AA 236-264)**[Go to Product page](#)

## 3 Images

## Overview

Quantity:	400 µL
Target:	BHLHE22
Binding Specificity:	AA 236-264
Reactivity:	Human
Host:	Rabbit
Clonality:	Polyclonal
Conjugate:	This BHLHE22 antibody is un-conjugated
Application:	Western Blotting (WB), Flow Cytometry (FACS), Immunohistochemistry (Paraffin-embedded Sections) (IHC (p))

## Product Details

Immunogen:	This BHLHB5 antibody is generated from rabbits immunized with a KLH conjugated synthetic peptide between 236-264 amino acids from the Central region of human BHLHB5.
Clone:	RB25879
Isotype:	Ig Fraction
Predicted Reactivity:	M
Purification:	This antibody is purified through a protein A column, followed by peptide affinity purification.

## Target Details

Target:	BHLHE22
---------	---------

## Target Details

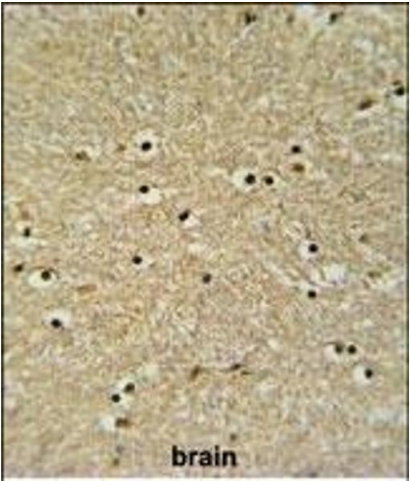
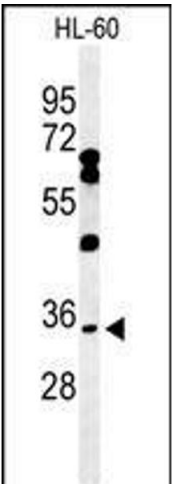
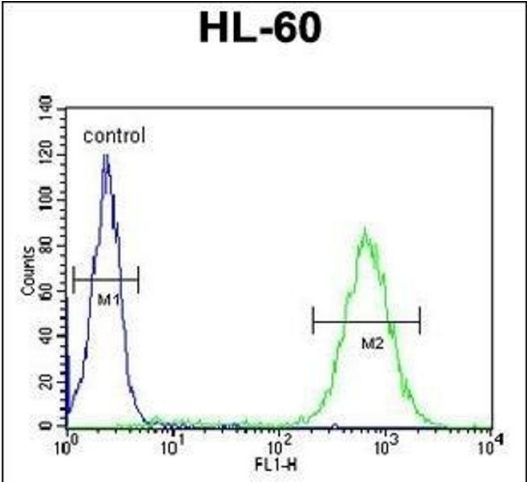
Alternative Name:	BHLHB5 ( <a href="#">BHLHE22 Products</a> )
Background:	BHLHB5 inhibits DNA binding of TCF3/E47 homodimers and TCF3 (E47)/NEUROD1 heterodimers and acts as a strong repressor of Neurod1 and Myod-responsive genes, probably by heterodimerization with class a basic helix-loop-helix factors. BHLHB5 despite the presence of an intact basic domain, does not bind to DNA.
Gene ID:	27319
NCBI Accession:	<a href="#">NP_689627</a>
UniProt:	<a href="#">Q8NFJ8</a>

## Application Details

Application Notes:	WB: 1:1000. IHC-P: 1:50~100. FC: 1:10~50
Restrictions:	For Research Use only

## Handling

Format:	Liquid
Buffer:	Purified polyclonal antibody supplied in PBS with 0.09 % (W/V) sodium azide.
Preservative:	Sodium azide
Precaution of Use:	This product contains Sodium azide: a POISONOUS AND HAZARDOUS SUBSTANCE which should be handled by trained staff only.
Storage:	4 °C,-20 °C
Storage Comment:	Maintain refrigerated at 2-8 °C for up to 6 months. For long term storage store at -20 °C in small aliquots to prevent freeze-thaw cycles.
Expiry Date:	6 months



**Flow Cytometry**

**Image 1.** BHLHB5 Antibody (Center) (ABIN650975 and ABIN2840018) flow cytometric analysis of HL-60 cells (right histogram) compared to a negative control cell (left histogram). FITC-conjugated goat-anti-rabbit secondary antibodies were used for the analysis.

**Western Blotting**

**Image 2.** Western blot analysis of BHLHB5 Antibody (Center) (ABIN650975 and ABIN2840018) in HL-60 cell line lysates (35 µg/lane). BHLHB5 (arrow) was detected using the purified Pab.

**Immunohistochemistry (Paraffin-embedded Sections)**

**Image 3.** BHLHB5 Antibody (Center) (ABIN650975 and ABIN2840018) IHC analysis in formalin fixed and paraffin embedded human brain tissue followed by peroxidase conjugation of the secondary antibody and DAB staining. This data demonstrates the use of the BHLHB5 Antibody (Center) for immunohistochemistry. Clinical relevance has not been evaluated.