

Datasheet for ABIN650980
anti-TJP1 antibody (C-Term)

3 Images

[Go to Product page](#)

Overview

Quantity:	400 µL
Target:	TJP1
Binding Specificity:	AA 1570-1600, C-Term
Reactivity:	Human
Host:	Rabbit
Clonality:	Polyclonal
Conjugate:	This TJP1 antibody is un-conjugated
Application:	Western Blotting (WB), Flow Cytometry (FACS), Immunohistochemistry (Paraffin-embedded Sections) (IHC (p))

Product Details

Immunogen:	This Z01 antibody is generated from rabbits immunized with a KLH conjugated synthetic peptide between 1570-1600 amino acids from the C-terminal region of human Z01.
Clone:	RB15419
Isotype:	Ig Fraction
Purification:	This antibody is prepared by Saturated Ammonium Sulfate (SAS) precipitation followed by dialysis against PBS.

Target Details

Target:	TJP1
Alternative Name:	Z01 (TJP1 Products)

Target Details

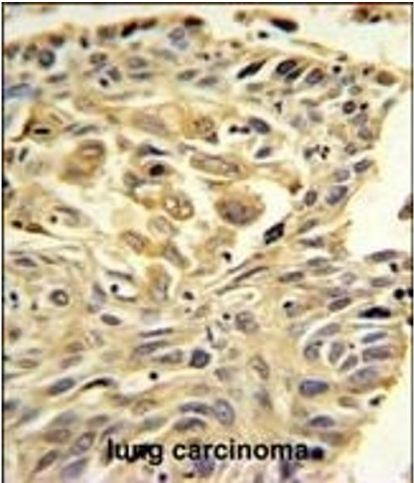
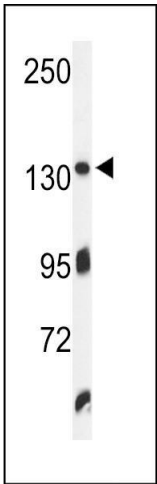
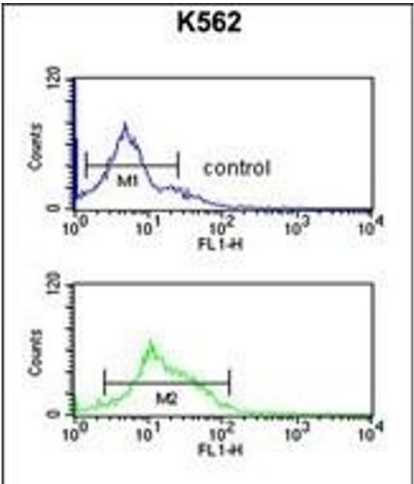
Background:	Z01 encodes a protein located on a cytoplasmic membrane surface of intercellular tight junctions. The encoded protein may be involved in signal transduction at cell-cell junctions.
Molecular Weight:	195459
Gene ID:	7082
NCBI Accession:	NP_003248 , NP_783297
UniProt:	Q07157
Pathways:	Carbohydrate Homeostasis , Cell-Cell Junction Organization

Application Details

Application Notes:	WB: 1:1000. IHC-P: 1:50~100. FC: 1:10~50
Restrictions:	For Research Use only

Handling

Format:	Liquid
Buffer:	Purified polyclonal antibody supplied in PBS with 0.09 % (W/V) sodium azide.
Preservative:	Sodium azide
Precaution of Use:	This product contains Sodium azide: a POISONOUS AND HAZARDOUS SUBSTANCE which should be handled by trained staff only.
Storage:	4 °C, -20 °C
Storage Comment:	Maintain refrigerated at 2-8 °C for up to 6 months. For long term storage store at -20 °C in small aliquots to prevent freeze-thaw cycles.
Expiry Date:	6 months



Flow Cytometry

Image 1. ZO1 Antibody (C-term) (ABIN650980 and ABIN2840020) flow cytometric analysis of K562 cells (bottom histogram) compared to a negative control cell (top histogram). FITC-conjugated goat-anti-rabbit secondary antibodies were used for the analysis.

Western Blotting

Image 2. Western blot analysis of ZO1 Antibody (C-term) (ABIN650980 and ABIN2840020) in K562 cell line lysates (35 µg/lane). ZO1 (arrow) was detected using the purified Pab.

Immunohistochemistry (Paraffin-embedded Sections)

Image 3. ZO1 Antibody (C-term) (ABIN650980 and ABIN2840020) IHC analysis in formalin fixed and paraffin embedded lung carcinoma followed by peroxidase conjugation of the secondary antibody and DAB staining. This data demonstrates the use of the ZO1 Antibody (C-term) for immunohistochemistry. Clinical relevance has not been evaluated.