

Datasheet for ABIN650993
anti-Epiregulin antibody (C-Term)[Go to Product page](#)

7 Images

Overview

Quantity:	400 µL
Target:	Epiregulin (EREG)
Binding Specificity:	AA 137-165, C-Term
Reactivity:	Human
Host:	Rabbit
Clonality:	Polyclonal
Conjugate:	This Epiregulin antibody is un-conjugated
Application:	Western Blotting (WB), Immunohistochemistry (Paraffin-embedded Sections) (IHC (p))

Product Details

Immunogen:	This EREG antibody is generated from rabbits immunized with a KLH conjugated synthetic peptide between 137-165 amino acids from the C-terminal region of human EREG.
Clone:	RB23784
Isotype:	Ig Fraction
Purification:	This antibody is purified through a protein A column, followed by peptide affinity purification.

Target Details

Target:	Epiregulin (EREG)
Alternative Name:	EREG (EREG Products)
Background:	EREG is a member of the epidermal growth factor family. EREG can function as a ligand of

Target Details

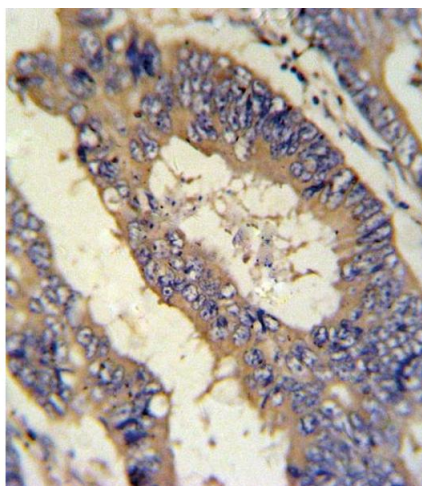
	EGFR (epidermal growth factor receptor), as well as a ligand of most members of the ERBB (v-erb-b2 oncogene homolog) family of tyrosine-kinase receptors.
Gene ID:	2069
NCBI Accession:	NP_001423
UniProt:	O14944
Pathways:	RTK Signaling , Fc-epsilon Receptor Signaling Pathway , EGFR Signaling Pathway , Neurotrophin Signaling Pathway , Regulation of Muscle Cell Differentiation

Application Details

Application Notes:	WB: 1:1000. WB: 1:2000. WB: 1:1000. WB: 1:2000. WB: 1:1000. IHC-P: 1:25. IHC-P: 1:10~50
Restrictions:	For Research Use only

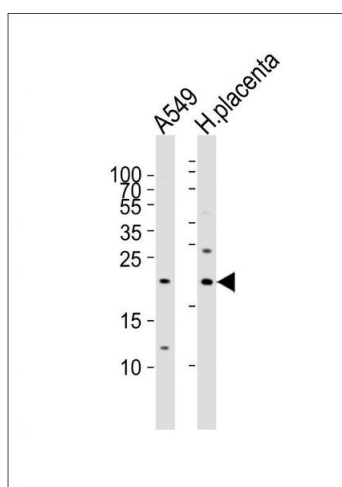
Handling

Format:	Liquid
Buffer:	Purified polyclonal antibody supplied in PBS with 0.09 % (W/V) sodium azide.
Preservative:	Sodium azide
Precaution of Use:	This product contains Sodium azide: a POISONOUS AND HAZARDOUS SUBSTANCE which should be handled by trained staff only.
Storage:	4 °C, -20 °C
Storage Comment:	Maintain refrigerated at 2-8 °C for up to 6 months. For long term storage store at -20 °C in small aliquots to prevent freeze-thaw cycles.
Expiry Date:	6 months



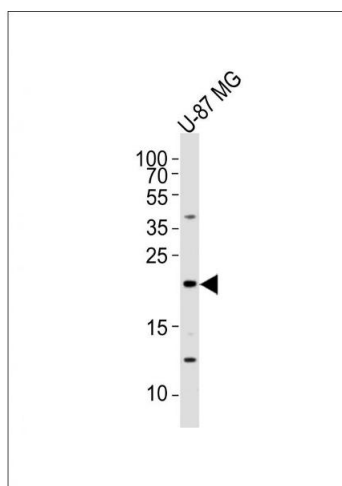
Immunohistochemistry (Paraffin-embedded Sections)

Image 1. EREG Antibody (C-term) (ABIN650993 and ABIN2840027) IHC analysis in formalin fixed and paraffin embedded colon carcinoma followed by peroxidase conjugation of the secondary antibody and DAB staining. This data demonstrates the use of the EREG Antibody (C-term) for immunohistochemistry. Clinical relevance has not been evaluated.



Western Blotting

Image 2. All lanes : Anti-EREG Antibody (C-term) at 1:1000 dilution Lane 1: A549 whole cell lysates Lane 2: human placenta lysates Lysates/proteins at 20 µg per lane. Secondary Goat Anti-Rabbit IgG, (H+L), Peroxidase conjugated at 1/10000 dilution Predicted band size : 19 kDa Blocking/Dilution buffer: 5 % NFDM/TBST.



Western Blotting

Image 3. Anti-EREG Antibody (C-term) at 1:2000 dilution + U-87 MG whole cell lysates Lysates/proteins at 20 µg per lane. Secondary Goat Anti-Rabbit IgG, (H+L), Peroxidase conjugated at 1/10000 dilution Predicted band size : 19 kDa Blocking/Dilution buffer: 5 % NFDM/TBST.

Please check the [product details page](#) for more images. Overall 7 images are available for ABIN650993.