

Datasheet for ABIN650998  
**anti-RPS13 antibody (AA 82-110)**

## 3 Images

[Go to Product page](#)

## Overview

Quantity:	400 µL
Target:	RPS13
Binding Specificity:	AA 82-110
Reactivity:	Human
Host:	Rabbit
Clonality:	Polyclonal
Conjugate:	This RPS13 antibody is un-conjugated
Application:	Western Blotting (WB), Flow Cytometry (FACS), Immunohistochemistry (Paraffin-embedded Sections) (IHC (p))

## Product Details

Immunogen:	This RPS13 antibody is generated from rabbits immunized with a KLH conjugated synthetic peptide between 82-110 amino acids from the Central region of human RPS13.
Clone:	RB23828
Isotype:	Ig Fraction
Predicted Reactivity:	B, C, Ha, M, Rat, X
Purification:	This antibody is purified through a protein A column, followed by peptide affinity purification.

## Target Details

Target:	RPS13
---------	-------

## Target Details

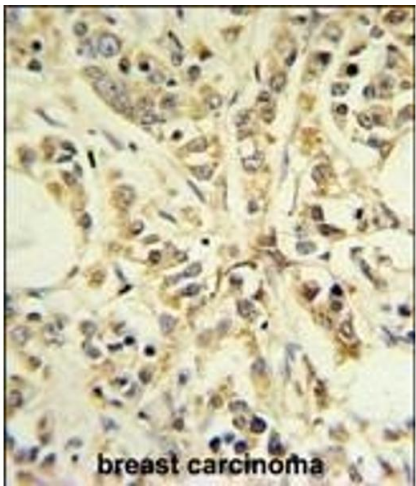
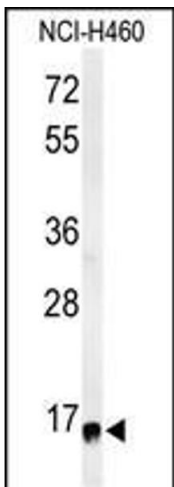
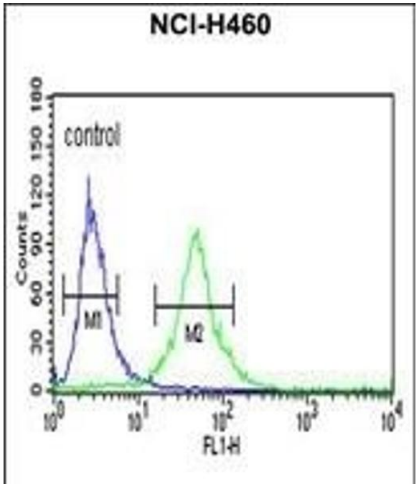
Alternative Name:	RPS13 ( <a href="#">RPS13 Products</a> )
Background:	RPS13, the organelles that catalyze protein synthesis, consist of a small 40S subunit and a large 60S subunit. Together these subunits are composed of 4 RNA species and approximately 80 structurally distinct proteins. This gene encodes a ribosomal protein that is a component of the 40S subunit. The protein belongs to the S15P family of ribosomal proteins. It is located in the cytoplasm. The protein has been shown to bind to the 5.8S rRNA in rat. The gene product of the E. coli ortholog (ribosomal protein S15) functions at early steps in ribosome assembly. This gene is co-transcribed with two U14 small nucleolar RNA genes, which are located in its third and fifth introns. As is typical for genes encoding ribosomal proteins, there are multiple processed pseudogenes of this gene dispersed through the genome.
Molecular Weight:	17222
Gene ID:	6207
NCBI Accession:	<a href="#">NP_001008</a>
UniProt:	<a href="#">P62277</a>

## Application Details

Application Notes:	WB: 1:1000. IHC-P: 1:50~100. FC: 1:10~50
Restrictions:	For Research Use only

## Handling

Format:	Liquid
Buffer:	Purified polyclonal antibody supplied in PBS with 0.09 % (W/V) sodium azide.
Preservative:	Sodium azide
Precaution of Use:	This product contains Sodium azide: a POISONOUS AND HAZARDOUS SUBSTANCE which should be handled by trained staff only.
Storage:	4 °C,-20 °C
Storage Comment:	Maintain refrigerated at 2-8 °C for up to 6 months. For long term storage store at -20 °C in small aliquots to prevent freeze-thaw cycles.
Expiry Date:	6 months



### Flow Cytometry

**Image 1.** RPS13 Antibody (Center) (ABIN650998 and ABIN2840031) flow cytometric analysis of NCI- cells (right histogram) compared to a negative control cell (left histogram). FITC-conjugated goat-anti-rabbit secondary antibodies were used for the analysis.

### Western Blotting

**Image 2.** Western blot analysis of RPS13 Antibody (Center) (ABIN650998 and ABIN2840031) in NCI- cell line lysates (35 µg/lane). RPS13 (arrow) was detected using the purified Pab.

### Immunohistochemistry (Paraffin-embedded Sections)

**Image 3.** RPS13 Antibody (Center) (ABIN650998 and ABIN2840031) IHC analysis in formalin fixed and paraffin embedded breast carcinoma followed by peroxidase conjugation of the secondary antibody and DAB staining. This data demonstrates the use of the RPS13 Antibody (Center) for immunohistochemistry. Clinical relevance has not been evaluated.