



[Go to Product page](#)

Datasheet for ABIN651000
anti-CEP63 antibody (AA 520-548)

2 Images

Overview

Quantity:	400 µL
Target:	CEP63
Binding Specificity:	AA 520-548
Reactivity:	Human
Host:	Rabbit
Clonality:	Polyclonal
Conjugate:	This CEP63 antibody is un-conjugated
Application:	Western Blotting (WB), Immunohistochemistry (Paraffin-embedded Sections) (IHC (p))

Product Details

Immunogen:	This CEP63 antibody is generated from rabbits immunized with a KLH conjugated synthetic peptide between 520-548 amino acids from the Central region of human CEP63.
Clone:	RB24657
Isotype:	Ig Fraction
Purification:	This antibody is purified through a protein A column, followed by peptide affinity purification.

Target Details

Target:	CEP63
Alternative Name:	CEP63 (CEP63 Products)
Background:	CEP63 is a protein with six coiled-coil domains. The protein is localized to the centrosome, a

Target Details

non-membraneous organelle that functions as the major microtubule-organizing center in animal cells.

Molecular Weight: 81344

Gene ID: 80254

NCBI Accession: [NP_001035842](#), [NP_001035843](#), [NP_001035859](#), [NP_079456](#)

UniProt: [Q96MT8](#)

Pathways: [M Phase](#)

Application Details

Application Notes: WB: 1:1000. IHC-P: 1:50~100

Restrictions: For Research Use only

Handling

Format: Liquid

Buffer: Purified polyclonal antibody supplied in PBS with 0.09 % (W/V) sodium azide.

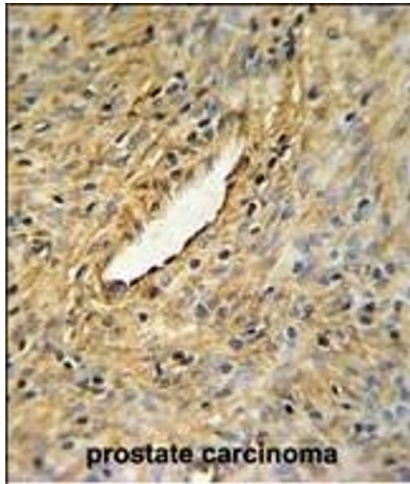
Preservative: Sodium azide

Precaution of Use: This product contains Sodium azide: a POISONOUS AND HAZARDOUS SUBSTANCE which should be handled by trained staff only.

Storage: 4 °C, -20 °C

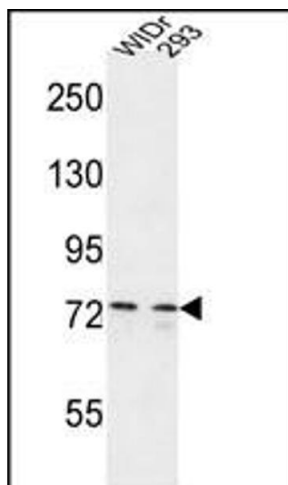
Storage Comment: Maintain refrigerated at 2-8 °C for up to 6 months. For long term storage store at -20 °C in small aliquots to prevent freeze-thaw cycles.

Expiry Date: 6 months



Immunohistochemistry (Paraffin-embedded Sections)

Image 1. CEP63 Antibody (Center) (ABIN651000 and ABIN2840033) IHC analysis in formalin fixed and paraffin embedded prostate carcinoma followed by peroxidase conjugation of the secondary antibody and DAB staining. This data demonstrates the use of the CEP63 Antibody (Center)) for immunohistochemistry. Clinical relevance has not been evaluated.



Western Blotting

Image 2. CEP63 Antibody (Center) (ABIN651000 and ABIN2840033) western blot analysis in WiDr,293 cell line lysates (35 µg/lane). This demonstrates the CEP63 antibody detected the CEP63 protein (arrow).