



[Go to Product page](#)

Datasheet for ABIN651003
anti-TELO2 antibody (C-Term)

3 Images

1 Publication

Overview

Quantity:	400 µL
Target:	TELO2
Binding Specificity:	AA 786-812, C-Term
Reactivity:	Human
Host:	Rabbit
Clonality:	Polyclonal
Conjugate:	This TELO2 antibody is un-conjugated
Application:	Western Blotting (WB), Flow Cytometry (FACS), Immunohistochemistry (Paraffin-embedded Sections) (IHC (p))

Product Details

Immunogen:	This TELO2 antibody is generated from rabbits immunized with a KLH conjugated synthetic peptide between 786-812 amino acids from the C-terminal region of human TELO2.
Clone:	RB24688
Isotype:	Ig Fraction
Purification:	This antibody is purified through a protein A column, followed by peptide affinity purification.

Target Details

Target:	TELO2
Alternative Name:	TELO2 (TELO2 Products)

Target Details

Background:	TELO2 is a protein that functions as an S-phase checkpoint protein in the cell cycle. The protein may also play a role in DNA repair.
Molecular Weight:	91747
Gene ID:	9894
NCBI Accession:	NP_057195
UniProt:	Q9Y4R8

Application Details

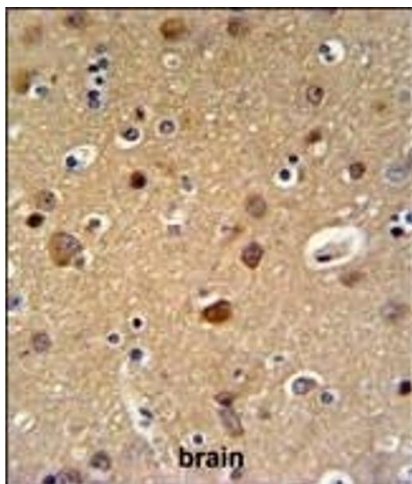
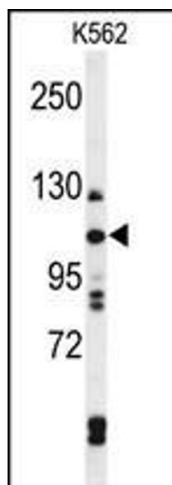
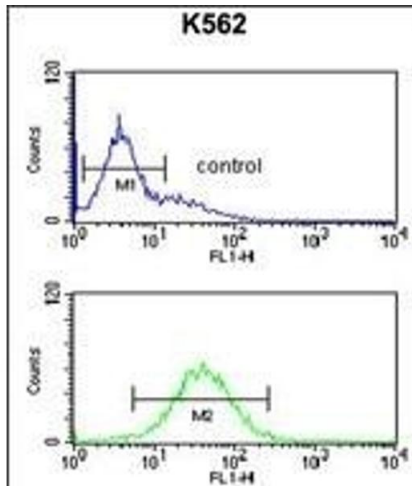
Application Notes:	WB: 1:1000. IHC-P: 1:50~100. FC: 1:10~50
Restrictions:	For Research Use only

Handling

Format:	Liquid
Buffer:	Purified polyclonal antibody supplied in PBS with 0.09 % (W/V) sodium azide.
Preservative:	Sodium azide
Precaution of Use:	This product contains Sodium azide: a POISONOUS AND HAZARDOUS SUBSTANCE which should be handled by trained staff only.
Storage:	4 °C,-20 °C
Storage Comment:	Maintain refrigerated at 2-8 °C for up to 6 months. For long term storage store at -20 °C in small aliquots to prevent freeze-thaw cycles.
Expiry Date:	6 months

Publications

Product cited in:	Cai, Zhou, Huang, Zeng, Zhang, Wang, Li, Feng, Han: "Reduced expression of Krüppel-like factor 17 is related to tumor growth and poor prognosis in lung adenocarcinoma." in: Biochemical and biophysical research communications , Vol. 418, Issue 1, pp. 67-73, (2012) (PubMed).
-------------------	--



Flow Cytometry

Image 1. TELO2 Antibody (C-term) (ABIN651003 and ABIN2840034) flow cytometric analysis of K562 cells (bottom histogram) compared to a negative control cell (top histogram). FITC-conjugated goat-anti-rabbit secondary antibodies were used for the analysis.

Western Blotting

Image 2. Western blot analysis of TELO2 Antibody (C-term) (ABIN651003 and ABIN2840034) in K562 cell line lysates (35 µg/lane). TELO2 (arrow) was detected using the purified Pab.

Immunohistochemistry (Paraffin-embedded Sections)

Image 3. TELO2 Antibody (C-term) (ABIN651003 and ABIN2840034) IHC analysis in formalin fixed and paraffin embedded brain tissue followed by peroxidase conjugation of the secondary antibody and DAB staining. This data demonstrates the use of the TELO2 Antibody (C-term) for immunohistochemistry. Clinical relevance has not been evaluated.