

Datasheet for ABIN651004
anti-CWC15 antibody (AA 123-152)[Go to Product page](#)

2 Images

Overview

Quantity:	400 µL
Target:	CWC15
Binding Specificity:	AA 123-152
Reactivity:	Human, Hamster
Host:	Rabbit
Clonality:	Polyclonal
Conjugate:	This CWC15 antibody is un-conjugated
Application:	Western Blotting (WB), Immunohistochemistry (Paraffin-embedded Sections) (IHC (p))

Product Details

Immunogen:	This CWC15 antibody is generated from rabbits immunized with a KLH conjugated synthetic peptide between 123-152 amino acids from the Central region of human CWC15.
Clone:	RB24694
Isotype:	Ig Fraction
Predicted Reactivity:	B, M, Rat
Purification:	This antibody is purified through a protein A column, followed by peptide affinity purification.

Target Details

Target:	CWC15
Alternative Name:	CWC15 (CWC15 Products)

Target Details

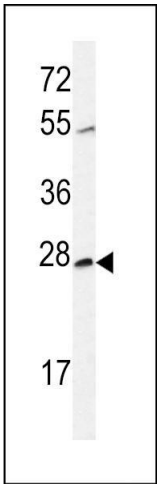
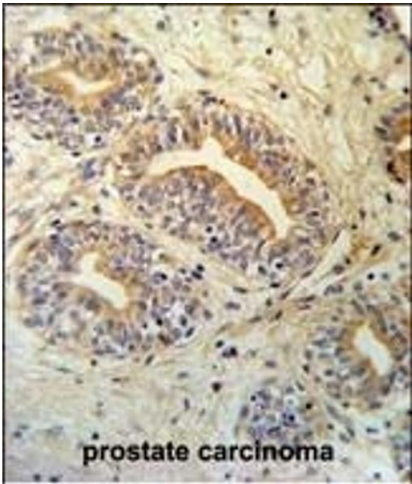
Background:	CWC15 involved in pre-mRNA splicing.
Molecular Weight:	26624
Gene ID:	51503
NCBI Accession:	NP_057487
UniProt:	Q9P013

Application Details

Application Notes:	WB: 1:1000. IHC-P: 1:50~100
Restrictions:	For Research Use only

Handling

Format:	Liquid
Buffer:	Purified polyclonal antibody supplied in PBS with 0.09 % (W/V) sodium azide.
Preservative:	Sodium azide
Precaution of Use:	This product contains Sodium azide: a POISONOUS AND HAZARDOUS SUBSTANCE which should be handled by trained staff only.
Storage:	4 °C,-20 °C
Storage Comment:	Maintain refrigerated at 2-8 °C for up to 6 months. For long term storage store at -20 °C in small aliquots to prevent freeze-thaw cycles.
Expiry Date:	6 months



Immunohistochemistry (Paraffin-embedded Sections)

Image 1. CWC15 Antibody (Center) (ABIN651004 and ABIN2840035) IHC analysis in formalin fixed and paraffin embedded prostate carcinoma followed by peroxidase conjugation of the secondary antibody and DAB staining. This data demonstrates the use of the CWC15 Antibody (Center) for immunohistochemistry. Clinical relevance has not been evaluated.

Western Blotting

Image 2. Western blot analysis of CWC15 Antibody (Center) (ABIN651004 and ABIN2840035) in CHO cell line lysates (35 µg/lane). CWC15 (arrow) was detected using the purified Pab.