



Datasheet for ABIN651014  
**anti-KLHDC2 antibody (C-Term)**



[Go to Product page](#)

2 Images

Overview

Quantity:	400 µL
Target:	KLHDC2
Binding Specificity:	AA 293-320, C-Term
Reactivity:	Human, Mouse
Host:	Rabbit
Clonality:	Polyclonal
Conjugate:	This KLHDC2 antibody is un-conjugated
Application:	Western Blotting (WB)

Product Details

Immunogen:	This KLDC2 antibody is generated from rabbits immunized with a KLH conjugated synthetic peptide between 293-320 amino acids from the C-terminal region of human KLDC2.
Clone:	RB24802
Isotype:	Ig Fraction
Purification:	This antibody is purified through a protein A column, followed by peptide affinity purification.

Target Details

Target:	KLHDC2
Alternative Name:	KLDC2 ( <a href="#">KLHDC2 Products</a> )
Background:	KLDC2 represses CREB3-mediated transcription by interfering with CREB3-DNA binding.

## Target Details

Gene ID: 23588

NCBI Accession: [NP\\_055130](#)

UniProt: [Q9Y2U9](#)

## Application Details

Application Notes: WB: 1:1000. WB: 1:1000

Restrictions: For Research Use only

## Handling

Format: Liquid

Buffer: Purified polyclonal antibody supplied in PBS with 0.09 % (W/V) sodium azide.

Preservative: Sodium azide

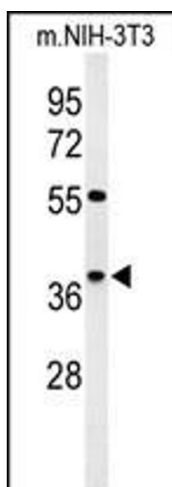
Precaution of Use: This product contains Sodium azide: a POISONOUS AND HAZARDOUS SUBSTANCE which should be handled by trained staff only.

Storage: 4 °C, -20 °C

Storage Comment: Maintain refrigerated at 2-8 °C for up to 6 months. For long term storage store at -20 °C in small aliquots to prevent freeze-thaw cycles.

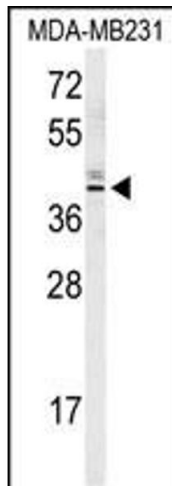
Expiry Date: 6 months

## Images



### Western Blotting

**Image 1.** Western blot analysis of KLDC2 Antibody (C-term) (ABIN651014 and ABIN2840038) in mouse NIH-3T3 cell line lysates (35 µg/lane). KLDC2 (arrow) was detected using the purified Pab.



### Western Blotting

**Image 2.** Western blot analysis of KLDC2 Antibody (C-term) (ABIN651014 and ABIN2840038) in MDA-M cell line lysates (35 µg/lane). KLDC2 (arrow) was detected using the purified Pab.