



[Go to Product page](#)

Datasheet for ABIN651024

anti-Coronin 6 antibody (C-Term)

2 Images

Overview

Quantity:	400 µL
Target:	Coronin 6 (CORO6)
Binding Specificity:	AA 337-365, C-Term
Reactivity:	Human, Mouse
Host:	Rabbit
Clonality:	Polyclonal
Conjugate:	This Coronin 6 antibody is un-conjugated
Application:	Western Blotting (WB), Immunohistochemistry (Paraffin-embedded Sections) (IHC (p))

Product Details

Immunogen:	This CORO6 antibody is generated from rabbits immunized with a KLH conjugated synthetic peptide between 337-365 amino acids from the C-terminal region of human CORO6.
Clone:	RB25514
Isotype:	Ig Fraction
Predicted Reactivity:	Rb, Rat, Zf
Purification:	This antibody is purified through a protein A column, followed by peptide affinity purification.

Target Details

Target:	Coronin 6 (CORO6)
Alternative Name:	CORO6 (CORO6 Products)

Target Details

Molecular Weight:	52762
Gene ID:	84940
NCBI Accession:	NP_116243
UniProt:	Q6QEF8

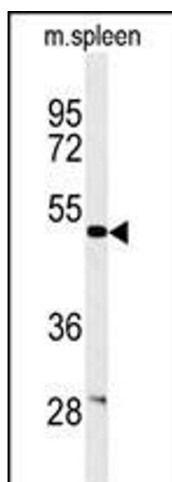
Application Details

Application Notes:	WB: 1:1000. IHC-P: 1:50~100
Restrictions:	For Research Use only

Handling

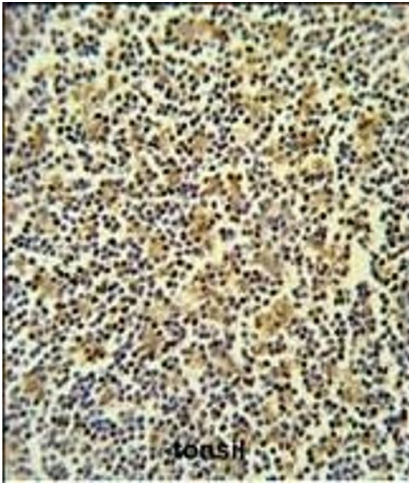
Format:	Liquid
Buffer:	Purified polyclonal antibody supplied in PBS with 0.09 % (W/V) sodium azide.
Preservative:	Sodium azide
Precaution of Use:	This product contains Sodium azide: a POISONOUS AND HAZARDOUS SUBSTANCE which should be handled by trained staff only.
Storage:	4 °C,-20 °C
Storage Comment:	Maintain refrigerated at 2-8 °C for up to 6 months. For long term storage store at -20 °C in small aliquots to prevent freeze-thaw cycles.
Expiry Date:	6 months

Validation report #101148 for Western Blotting (WB)



Western Blotting

Image 1. Western blot analysis of CORO6 Antibody (C-term) (ABIN651024 and ABIN2840040) in mouse spleen tissue lysates (35 µg/lane). CORO6 (arrow) was detected using the purified Pab.



Immunohistochemistry (Paraffin-embedded Sections)

Image 2. CORO6 Antibody (C-term) (ABIN651024 and ABIN2840040) IHC analysis in formalin fixed and paraffin embedded lymph carcinoma followed by peroxidase conjugation of the secondary antibody and DAB staining. This data demonstrates the use of the CORO6 Antibody (C-term) for immunohistochemistry. Clinical relevance has not been evaluated.