



[Go to Product page](#)

Datasheet for ABIN651025  
**anti-Coronin 6 antibody (AA 196-224)**

3 Images

### Overview

Quantity:	400 µL
Target:	Coronin 6 (CORO6)
Binding Specificity:	AA 196-224
Reactivity:	Human, Mouse
Host:	Rabbit
Clonality:	Polyclonal
Conjugate:	This Coronin 6 antibody is un-conjugated
Application:	Western Blotting (WB), Flow Cytometry (FACS), Immunohistochemistry (Paraffin-embedded Sections) (IHC (p))

### Product Details

Immunogen:	This CORO6 antibody is generated from rabbits immunized with a KLH conjugated synthetic peptide between 196-224 amino acids from the Central region of human CORO6.
Clone:	RB27273
Isotype:	Ig Fraction
Purification:	This antibody is purified through a protein A column, followed by peptide affinity purification.

### Target Details

Target:	Coronin 6 (CORO6)
Alternative Name:	CORO6 ( <a href="#">CORO6 Products</a> )

## Target Details

Molecular Weight:	52762
Gene ID:	84940
NCBI Accession:	<a href="#">NP_116243</a>
UniProt:	<a href="#">Q6QEF8</a>

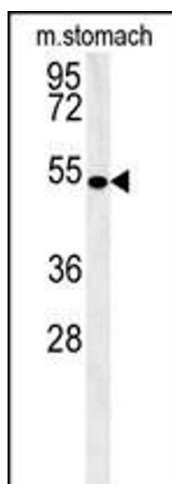
## Application Details

Application Notes:	WB: 1:1000. IHC-P: 1:50~100. FC: 1:10~50
Restrictions:	For Research Use only

## Handling

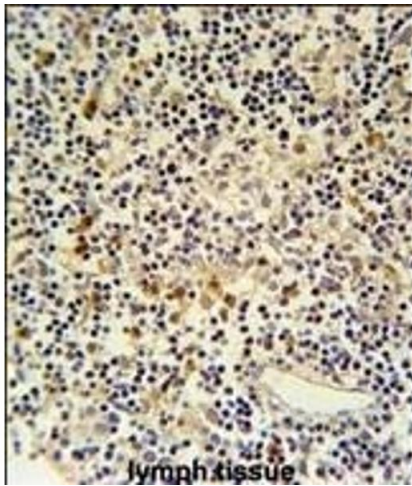
Format:	Liquid
Buffer:	Purified polyclonal antibody supplied in PBS with 0.09 % (W/V) sodium azide.
Preservative:	Sodium azide
Precaution of Use:	This product contains Sodium azide: a POISONOUS AND HAZARDOUS SUBSTANCE which should be handled by trained staff only.
Storage:	4 °C,-20 °C
Storage Comment:	Maintain refrigerated at 2-8 °C for up to 6 months. For long term storage store at -20 °C in small aliquots to prevent freeze-thaw cycles.
Expiry Date:	6 months

## Images



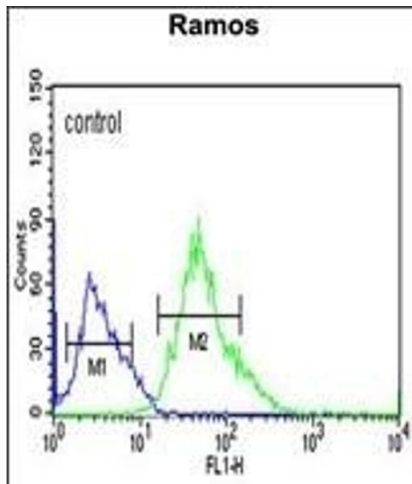
### Western Blotting

**Image 1.** COR06 Antibody (Center) (ABIN651025 and ABIN2840041) western blot analysis in mouse stomach tissue lysates (15 µg/lane). This demonstrates the COR06 antibody detected COR06 protein (arrow).



### Immunohistochemistry (Paraffin-embedded Sections)

**Image 2.** CORO6 Antibody (Center) (ABIN651025 and ABIN2840041) immunohistochemistry analysis in formalin fixed and paraffin embedded human lymph tissue followed by peroxidase conjugation of the secondary antibody and DAB staining. This data demonstrates the use of the CORO6 Antibody (Center) for immunohistochemistry. Clinical relevance has not been evaluated.



### Flow Cytometry

**Image 3.** CORO6 Antibody (Center) (ABIN651025 and ABIN2840041) flow cytometric analysis of Ramos cells (right histogram) compared to a negative control cell (left histogram). FITC-conjugated goat-anti-rabbit secondary antibodies were used for the analysis.