



[Go to Product page](#)

Datasheet for ABIN651030
anti-INO80B antibody (AA 146-174)

2 Images

Overview

Quantity:	400 µL
Target:	INO80B
Binding Specificity:	AA 146-174
Reactivity:	Human
Host:	Rabbit
Clonality:	Polyclonal
Conjugate:	This INO80B antibody is un-conjugated
Application:	Western Blotting (WB), Flow Cytometry (FACS)

Product Details

Immunogen:	This IN80B antibody is generated from rabbits immunized with a KLH conjugated synthetic peptide between 146-174 amino acids from the Central region of human INO80B.
Clone:	RB25543
Isotype:	Ig Fraction
Predicted Reactivity:	M
Purification:	This antibody is purified through a protein A column, followed by peptide affinity purification.

Target Details

Target:	INO80B
Alternative Name:	INO80B (INO80B Products)

Target Details

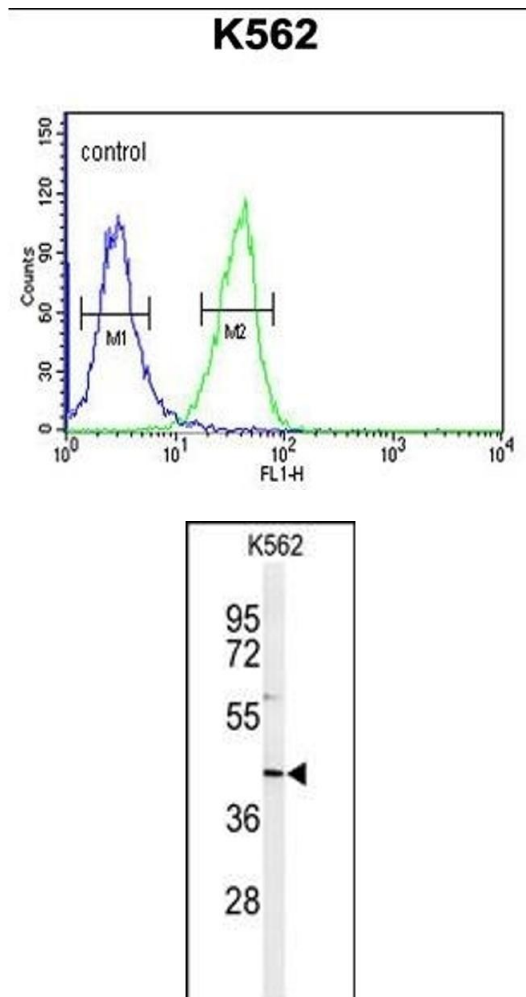
Background:	IN80B induces growth and cell cycle arrests at the G1 phase of the cell cycle.
Molecular Weight:	38637
Gene ID:	83444
NCBI Accession:	NP_112578
UniProt:	Q9C086

Application Details

Application Notes:	WB: 1:1000. FC: 1:10~50
Restrictions:	For Research Use only

Handling

Format:	Liquid
Buffer:	Purified polyclonal antibody supplied in PBS with 0.09 % (W/V) sodium azide.
Preservative:	Sodium azide
Precaution of Use:	This product contains Sodium azide: a POISONOUS AND HAZARDOUS SUBSTANCE which should be handled by trained staff only.
Storage:	4 °C,-20 °C
Storage Comment:	Maintain refrigerated at 2-8 °C for up to 6 months. For long term storage store at -20 °C in small aliquots to prevent freeze-thaw cycles.
Expiry Date:	6 months



Flow Cytometry

Image 1. IN80B Antibody (Center) (ABIN651030 and ABIN2840042) flow cytometric analysis of K562 cells (right histogram) compared to a negative control cell (left histogram). FITC-conjugated goat-anti-rabbit secondary antibodies were used for the analysis.

Western Blotting

Image 2. Western blot analysis of IN80B Antibody (Center) (ABIN651030 and ABIN2840042) in K562 cell line lysates (35 µg/lane). IN80B (arrow) was detected using the purified Pab.