



[Go to Product page](#)

Datasheet for ABIN651036
anti-ZCCHC24 antibody (C-Term)

3 Images

Overview

Quantity:	400 µL
Target:	ZCCHC24
Binding Specificity:	AA 136-165, C-Term
Reactivity:	Human, Hamster
Host:	Rabbit
Clonality:	Polyclonal
Conjugate:	This ZCCHC24 antibody is un-conjugated
Application:	Western Blotting (WB), Immunohistochemistry (Paraffin-embedded Sections) (IHC (p))

Product Details

Immunogen:	This ZCH24 antibody is generated from rabbits immunized with a KLH conjugated synthetic peptide between 136-165 amino acids from the C-terminal region of human ZCH24.
Clone:	RB25672
Isotype:	Ig Fraction
Predicted Reactivity:	Pr, M
Purification:	This antibody is purified through a protein A column, followed by peptide affinity purification.

Target Details

Target:	ZCCHC24
Alternative Name:	ZCH24 (ZCCHC24 Products)

Target Details

Molecular Weight:	26955
Gene ID:	219654
NCBI Accession:	NP_699198
UniProt:	Q8N2G6

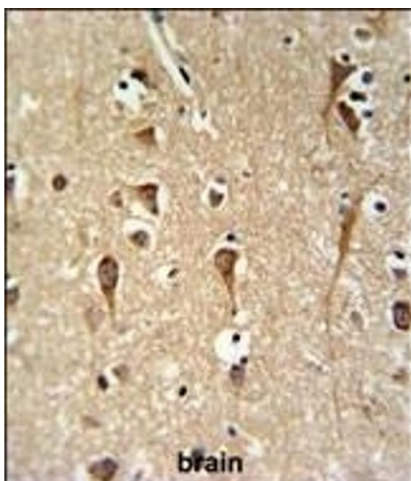
Application Details

Application Notes:	WB: 1:1000. WB: 1:1000. IHC-P: 1:50~100
Restrictions:	For Research Use only

Handling

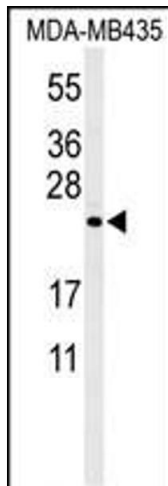
Format:	Liquid
Buffer:	Purified polyclonal antibody supplied in PBS with 0.09 % (W/V) sodium azide.
Preservative:	Sodium azide
Precaution of Use:	This product contains Sodium azide: a POISONOUS AND HAZARDOUS SUBSTANCE which should be handled by trained staff only.
Storage:	4 °C,-20 °C
Storage Comment:	Maintain refrigerated at 2-8 °C for up to 6 months. For long term storage store at -20 °C in small aliquots to prevent freeze-thaw cycles.
Expiry Date:	6 months

Images



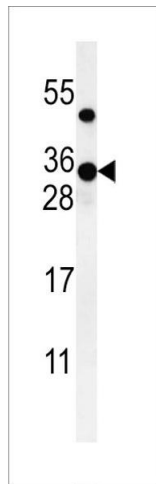
Immunohistochemistry (Paraffin-embedded Sections)

Image 1. ZCH24 Antibody (C-term) (ABIN651036 and ABIN2840043) IHC analysis in formalin fixed and paraffin embedded brain tissue followed by peroxidase conjugation of the secondary antibody and DAB staining. This data demonstrates the use of the ZCH24 Antibody (C-term) for immunohistochemistry. Clinical relevance has not been evaluated.



Western Blotting

Image 2. Western blot analysis of ZCH24 Antibody (C-term) (ABIN651036 and ABIN2840043) in MDA-M cell line lysates (35 µg/lane). ZCH24 (arrow) was detected using the purified Pab.



Western Blotting

Image 3. Western blot analysis of ZCH24 Antibody (C-term) (ABIN651036 and ABIN2840043) in CHO cell line lysates (35 µg/lane). ZCH24 (arrow) was detected using the purified Pab.