

Datasheet for ABIN651041  
**anti-SETD6 antibody (C-Term)**[Go to Product page](#)

## 2 Images

## Overview

Quantity:	400 µL
Target:	SETD6
Binding Specificity:	AA 310-338, C-Term
Reactivity:	Human
Host:	Rabbit
Clonality:	Polyclonal
Conjugate:	This SETD6 antibody is un-conjugated
Application:	Western Blotting (WB), Immunohistochemistry (Paraffin-embedded Sections) (IHC (p))

## Product Details

Immunogen:	This SETD6 antibody is generated from rabbits immunized with a KLH conjugated synthetic peptide between 310-338 amino acids from the C-terminal region of human SETD6.
Clone:	RB25905
Isotype:	Ig Fraction
Purification:	This antibody is purified through a protein A column, followed by peptide affinity purification.

## Target Details

Target:	SETD6
Alternative Name:	SETD6 ( <a href="#">SETD6 Products</a> )
Molecular Weight:	53189

## Target Details

Gene ID:	79918
NCBI Accession:	<a href="#">NP_001153777</a> , <a href="#">NP_079136</a>
UniProt:	<a href="#">Q8TBK2</a>

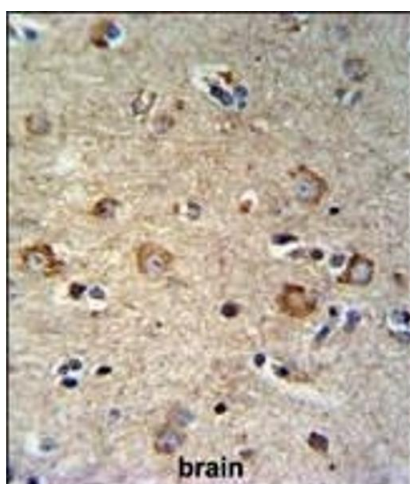
## Application Details

Application Notes:	WB: 1:1000. IHC-P: 1:50~100
Restrictions:	For Research Use only

## Handling

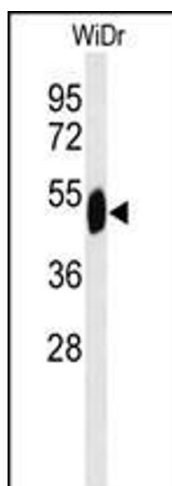
Format:	Liquid
Buffer:	Purified polyclonal antibody supplied in PBS with 0.09 % (W/V) sodium azide.
Preservative:	Sodium azide
Precaution of Use:	This product contains Sodium azide: a POISONOUS AND HAZARDOUS SUBSTANCE which should be handled by trained staff only.
Storage:	4 °C,-20 °C
Storage Comment:	Maintain refrigerated at 2-8 °C for up to 6 months. For long term storage store at -20 °C in small aliquots to prevent freeze-thaw cycles.
Expiry Date:	6 months

## Images



### Immunohistochemistry (Paraffin-embedded Sections)

**Image 1.** SETD6 Antibody (C-term) (ABIN651041 and ABIN2840045) IHC analysis in formalin fixed and paraffin embedded brain tissue followed by peroxidase conjugation of the secondary antibody and DAB staining. This data demonstrates the use of the SETD6 Antibody (C-term) for immunohistochemistry. Clinical relevance has not been evaluated.



#### Western Blotting

**Image 2.** Western blot analysis of SETD6 Antibody (C-term) (ABIN651041 and ABIN2840045) in WiDr cell line lysates (35 µg/lane). SETD6 (arrow) was detected using the purified Pab.