



[Go to Product page](#)

Datasheet for ABIN651044

anti-C19orf21 antibody (N-Term)

3 Images

Overview

Quantity:	400 µL
Target:	C19orf21 (MISP)
Binding Specificity:	AA 63-91, N-Term
Reactivity:	Human
Host:	Rabbit
Clonality:	Polyclonal
Conjugate:	This C19orf21 antibody is un-conjugated
Application:	Western Blotting (WB), Flow Cytometry (FACS), Immunohistochemistry (Paraffin-embedded Sections) (IHC (p))

Product Details

Immunogen:	This C19orf21 antibody is generated from rabbits immunized with a KLH conjugated synthetic peptide between 63-91 amino acids from the N-terminal region of human C19orf21.
Clone:	RB25913
Isotype:	Ig Fraction
Purification:	This antibody is purified through a protein A column, followed by peptide affinity purification.

Target Details

Target:	C19orf21 (MISP)
Alternative Name:	C19orf21 (MISP Products)

Target Details

Background: The exact function of C19orf21 remains unknown.

Molecular Weight: 75357

Gene ID: 126353

NCBI Accession: [NP_775752](#)

UniProt: [Q8IVT2](#)

Application Details

Application Notes: WB: 1:1000. IHC-P: 1:50~100. FC: 1:10~50

Restrictions: For Research Use only

Handling

Format: Liquid

Buffer: Purified polyclonal antibody supplied in PBS with 0.09 % (W/V) sodium azide.

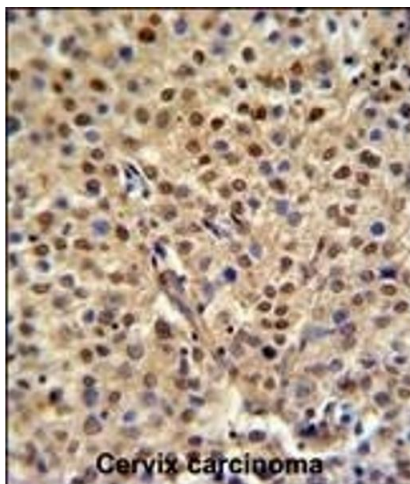
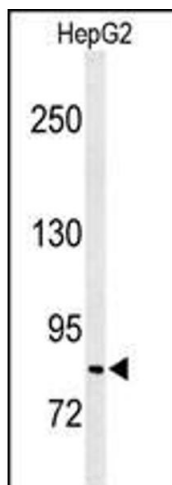
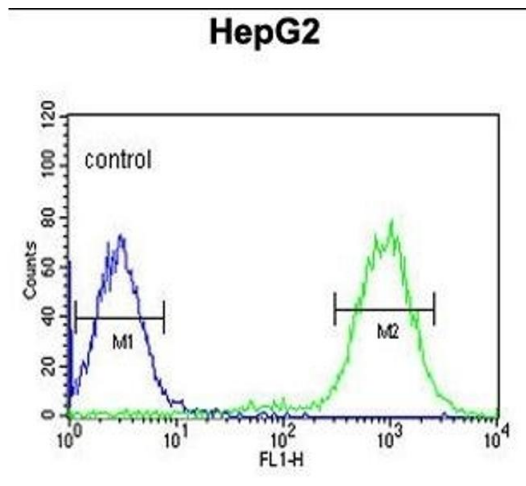
Preservative: Sodium azide

Precaution of Use: This product contains Sodium azide: a POISONOUS AND HAZARDOUS SUBSTANCE which should be handled by trained staff only.

Storage: 4 °C, -20 °C

Storage Comment: Maintain refrigerated at 2-8 °C for up to 6 months. For long term storage store at -20 °C in small aliquots to prevent freeze-thaw cycles.

Expiry Date: 6 months



Flow Cytometry

Image 1. C19orf21 Antibody (N-term) (ABIN651044 and ABIN2840046) flow cytometric analysis of HepG2 cells (right histogram) compared to a negative control cell (left histogram). FITC-conjugated goat-anti-rabbit secondary antibodies were used for the analysis.

Western Blotting

Image 2. Western blot analysis of C19orf21 Antibody (N-term) (ABIN651044 and ABIN2840046) in HepG2 cell line lysates (35 µg/lane). C19orf21 (arrow) was detected using the purified Pab.

Immunohistochemistry (Paraffin-embedded Sections)

Image 3. C19orf21 Antibody (N-term) (ABIN651044 and ABIN2840046) IHC analysis in formalin fixed and paraffin embedded human cervix carcinoma followed by peroxidase conjugation of the secondary antibody and DAB staining. This data demonstrates the use of the C19orf21 Antibody (N-term) for immunohistochemistry. Clinical relevance has not been evaluated.