

Datasheet for ABIN651053  
**anti-BLM antibody (C-Term)**[Go to Product page](#)

## 2 Images

## Overview

Quantity:	400 µL
Target:	BLM
Binding Specificity:	AA 1054-1082, C-Term
Reactivity:	Human
Host:	Rabbit
Clonality:	Polyclonal
Conjugate:	This BLM antibody is un-conjugated
Application:	Western Blotting (WB), Flow Cytometry (FACS)

## Product Details

Immunogen:	This BLM antibody is generated from rabbits immunized with a KLH conjugated synthetic peptide between 1054-1082 amino acids from the C-terminal region of human BLM.
Clone:	RB25943
Isotype:	Ig Fraction
Purification:	This antibody is purified through a protein A column, followed by peptide affinity purification.

## Target Details

Target:	BLM
Alternative Name:	BLM ( <a href="#">BLM Products</a> )
Background:	BLM is related to the RecQ subset of DExH box-containing DNA helicases and has both DNA-

## Target Details

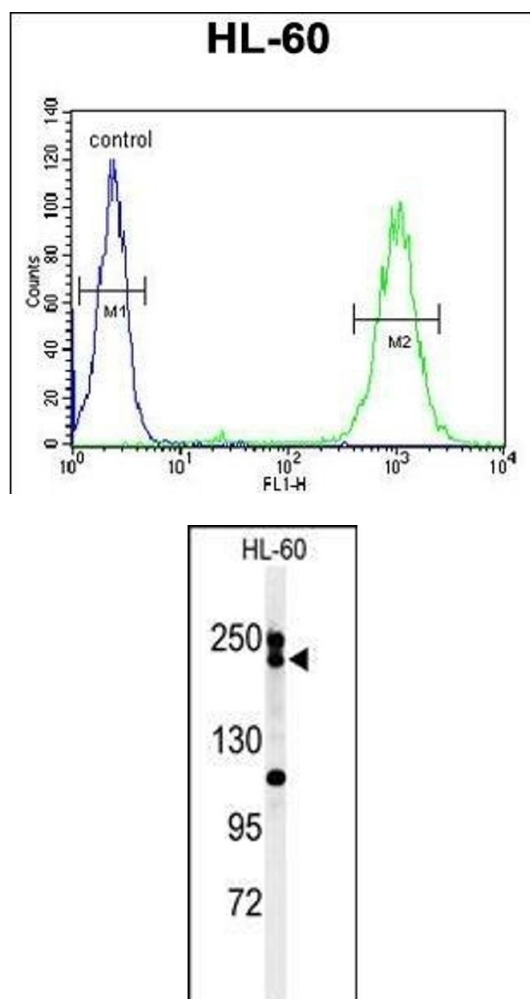
	stimulated ATPase and ATP-dependent DNA helicase activities.
Molecular Weight:	159000
Gene ID:	641
NCBI Accession:	<a href="#">NP_000048</a>
UniProt:	<a href="#">P54132</a>
Pathways:	<a href="#">DNA Damage Repair</a>

## Application Details

Application Notes:	WB: 1:1000. FC: 1:10~50
Restrictions:	For Research Use only

## Handling

Format:	Liquid
Buffer:	Purified polyclonal antibody supplied in PBS with 0.09 % (W/V) sodium azide.
Preservative:	Sodium azide
Precaution of Use:	This product contains Sodium azide: a POISONOUS AND HAZARDOUS SUBSTANCE which should be handled by trained staff only.
Storage:	4 °C,-20 °C
Storage Comment:	Maintain refrigerated at 2-8 °C for up to 6 months. For long term storage store at -20 °C in small aliquots to prevent freeze-thaw cycles.
Expiry Date:	6 months



### Flow Cytometry

**Image 1.** BLM Antibody (C-term) (ABIN651053 and ABIN2840049) flow cytometric analysis of HL-60 cells (right histogram) compared to a negative control cell (left histogram). FITC-conjugated goat-anti-rabbit secondary antibodies were used for the analysis.

### Western Blotting

**Image 2.** Western blot analysis of BLM Antibody (C-term) (ABIN651053 and ABIN2840049) in HL-60 cell line lysates (35  $\mu$ g/lane). BLM (arrow) was detected using the purified Pab.