

Datasheet for ABIN651055  
**anti-AFT1 antibody (C-Term)**

## 2 Images

[Go to Product page](#)

## Overview

Quantity:	400 µL
Target:	AFT1
Binding Specificity:	AA 193-219, C-Term
Reactivity:	Human
Host:	Rabbit
Clonality:	Polyclonal
Application:	Western Blotting (WB), Flow Cytometry (FACS)

## Product Details

Immunogen:	This ATF1 antibody is generated from rabbits immunized with a KLH conjugated synthetic peptide between 193-219 amino acids from the C-terminal region of human ATF1.
Clone:	RB22228
Isotype:	Ig Fraction
Predicted Reactivity:	B
Purification:	This antibody is purified through a protein A column, followed by peptide affinity purification.

## Target Details

Target:	AFT1
Alternative Name:	ATF1 ( <a href="#">AFT1 Products</a> )
Background:	ATF1 binds the cAMP response element (CRE) (consensus: 5'-GTGACGT[AC][AG]-3'), a

## Target Details

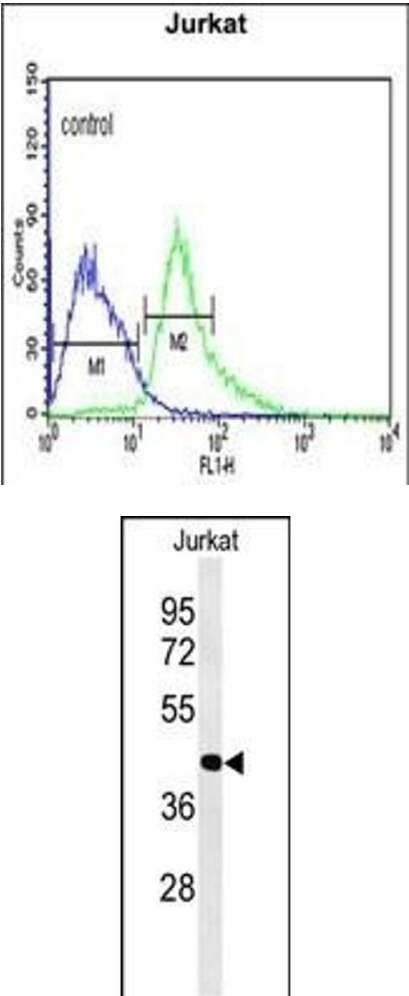
	sequence present in many viral and cellular promoters. ATF1 binds to the Tax-responsive element (TRE) of HTLV-I. ATF1 mediates PKA-induced stimulation of CRE-reporter genes.
Molecular Weight:	29233
Gene ID:	466
NCBI Accession:	<a href="#">NP_005162</a>
UniProt:	<a href="#">P18846</a>
Pathways:	<a href="#">Neurotrophin Signaling Pathway</a> , <a href="#">Activation of Innate immune Response</a> , <a href="#">Myometrial Relaxation and Contraction</a> , <a href="#">Toll-Like Receptors Cascades</a>

## Application Details

Application Notes:	WB: 1:1000. FC: 1:10~50
Restrictions:	For Research Use only

## Handling

Format:	Liquid
Buffer:	Purified polyclonal antibody supplied in PBS with 0.09 % (W/V) sodium azide.
Preservative:	Sodium azide
Precaution of Use:	This product contains Sodium azide: a POISONOUS AND HAZARDOUS SUBSTANCE which should be handled by trained staff only.
Storage:	4 °C,-20 °C
Storage Comment:	Maintain refrigerated at 2-8 °C for up to 6 months. For long term storage store at -20 °C in small aliquots to prevent freeze-thaw cycles.
Expiry Date:	6 months



Flow Cytometry

**Image 1.** ATF1 Antibody (C-term) (ABIN651055 and ABIN2840051) flow cytometric analysis of Jurkat cells (right histogram) compared to a negative control cell (left histogram).FITC-conjugated goat-anti-rabbit secondary antibodies were used for the analysis.

Western Blotting

**Image 2.** Western blot analysis of ATF1 Antibody (C-term) (ABIN651055 and ABIN2840051) in Jurkat cell line lysates (35 µg/lane). ATF1 (arrow) was detected using the purified Pab.