



[Go to Product page](#)

Datasheet for ABIN651071
anti-ISLR antibody (C-Term)

3 Images

Overview

Quantity:	400 µL
Target:	ISLR
Binding Specificity:	AA 333-362, C-Term
Reactivity:	Human
Host:	Rabbit
Clonality:	Polyclonal
Conjugate:	This ISLR antibody is un-conjugated
Application:	Western Blotting (WB), Flow Cytometry (FACS), Immunohistochemistry (Paraffin-embedded Sections) (IHC (p))

Product Details

Immunogen:	This ISLR antibody is generated from rabbits immunized with a KLH conjugated synthetic peptide between 333-362 amino acids from the C-terminal region of human ISLR.
Clone:	RB22277
Isotype:	Ig Fraction
Purification:	This antibody is purified through a protein A column, followed by peptide affinity purification.

Target Details

Target:	ISLR
Alternative Name:	ISLR (ISLR Products)

Target Details

Molecular Weight:	45997
Gene ID:	3671
NCBI Accession:	NP_005536 , NP_958934
UniProt:	O14498

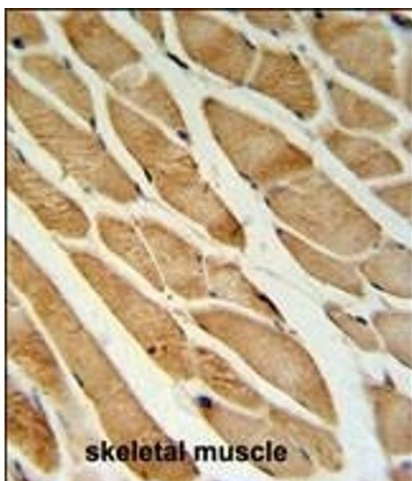
Application Details

Application Notes:	WB: 1:1000. IHC-P: 1:50~100. FC: 1:10~50
Restrictions:	For Research Use only

Handling

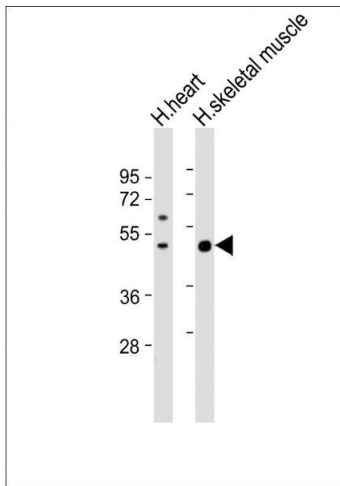
Format:	Liquid
Buffer:	Purified polyclonal antibody supplied in PBS with 0.09 % (W/V) sodium azide.
Preservative:	Sodium azide
Precaution of Use:	This product contains Sodium azide: a POISONOUS AND HAZARDOUS SUBSTANCE which should be handled by trained staff only.
Storage:	4 °C, -20 °C
Storage Comment:	Maintain refrigerated at 2-8 °C for up to 6 months. For long term storage store at -20 °C in small aliquots to prevent freeze-thaw cycles.
Expiry Date:	6 months

Images



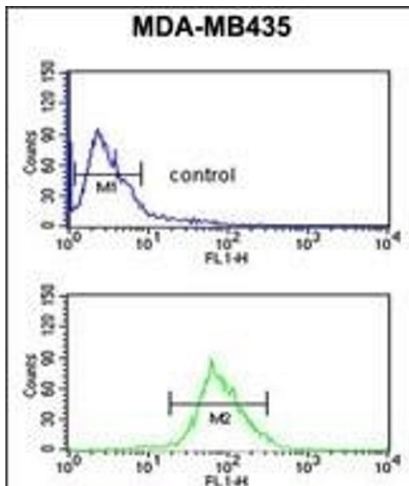
Immunohistochemistry (Paraffin-embedded Sections)

Image 1. ISLR Antibody (C-term) (ABIN651071 and ABIN2840058) IHC analysis in formalin fixed and paraffin embedded skeletal muscle followed by peroxidase conjugation of the secondary antibody and DAB staining. This data demonstrates the use of the ISLR Antibody (C-term) for immunohistochemistry. Clinical relevance has not been evaluated.



Western Blotting

Image 2. All lanes : Anti-ISLR Antibody (C-term) at 1:1000 dilution Lane 1: human heart lysate Lane 2: human skeletal muscle lysate Lysates/proteins at 20 µg per lane. Secondary Goat Anti-Rabbit IgG, (H+L), Peroxidase conjugated at 1/10000 dilution. Predicted band size : 46 kDa Blocking/Dilution buffer: 5 % NFDN/TBST.



Flow Cytometry

Image 3. ISLR Antibody (C-term) (ABIN651071 and ABIN2840058) flow cytometric analysis of MDA-M cells (bottom histogram) compared to a negative control cell (top histogram). FITC-conjugated goat-anti-rabbit secondary antibodies were used for the analysis.