

Datasheet for ABIN651072

anti-PLA2G1B antibody (C-Term)**3** Images[Go to Product page](#)

Overview

Quantity:	400 µL
Target:	PLA2G1B
Binding Specificity:	AA 116-145, C-Term
Reactivity:	Human, Mouse
Host:	Rabbit
Clonality:	Polyclonal
Conjugate:	This PLA2G1B antibody is un-conjugated
Application:	Western Blotting (WB), Flow Cytometry (FACS)

Product Details

Immunogen:	This PLA2G1B antibody is generated from rabbits immunized with a KLH conjugated synthetic peptide between 116-145 amino acids from the C-terminal region of human PLA2G1B.
Clone:	RB22889
Isotype:	Ig Fraction
Purification:	This antibody is purified through a protein A column, followed by peptide affinity purification.

Target Details

Target:	PLA2G1B
Alternative Name:	PLA2G1B (PLA2G1B Products)
Background:	PLA2G1B catalyzes the release of fatty acids from glycerol-3-phosphocholines. The best known

Target Details

varieties are the digestive enzymes secreted as zymogens by the pancreas of mammals. Sequences of pancreatic PLA2 enzymes from a variety of mammals have been reported. One striking feature of these enzymes is their close homology to venom phospholipases of snakes. Other forms of PLA2 have been isolated from brain, liver, lung, spleen, intestine, macrophages, leukocytes, erythrocytes, inflammatory exudates, chondrocytes, and platelets

Molecular Weight: 16360

Gene ID: 5319

NCBI Accession: [NP_000919](#)

UniProt: [P04054](#)

Pathways: [Inositol Metabolic Process](#), [VEGF Signaling](#)

Application Details

Application Notes: WB: 1:1000. WB: 1:1000. FC: 1:10~50

Restrictions: For Research Use only

Handling

Format: Liquid

Buffer: Purified polyclonal antibody supplied in PBS with 0.09 % (W/V) sodium azide.

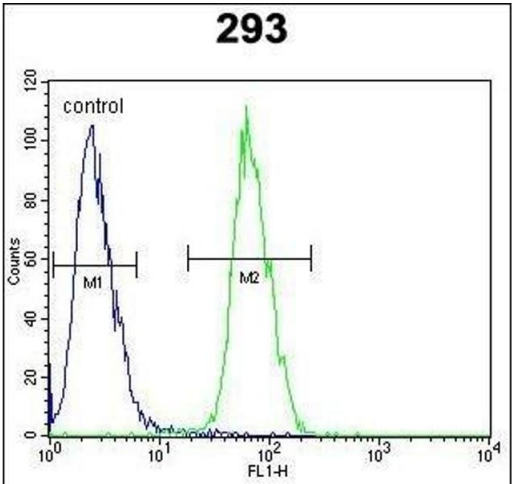
Preservative: Sodium azide

Precaution of Use: This product contains Sodium azide: a POISONOUS AND HAZARDOUS SUBSTANCE which should be handled by trained staff only.

Storage: 4 °C, -20 °C

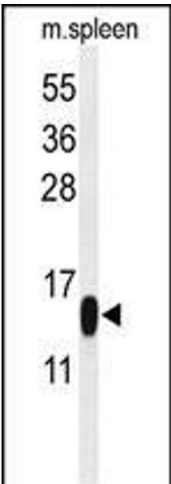
Storage Comment: Maintain refrigerated at 2-8 °C for up to 6 months. For long term storage store at -20 °C in small aliquots to prevent freeze-thaw cycles.

Expiry Date: 6 months



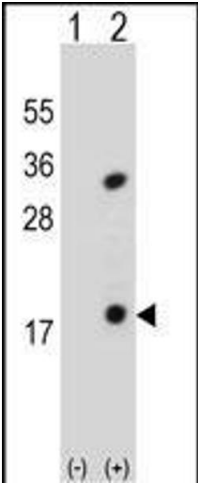
Flow Cytometry

Image 1. PLA2G1B Antibody (C-term) (ABIN651072 and ABIN2840059) flow cytometric analysis of 293 cells (right histogram) compared to a negative control cell (left histogram).FITC-conjugated goat-anti-rabbit secondary antibodies were used for the analysis.



Western Blotting

Image 2. Western blot analysis of PLA2G1B Antibody (C-term) (ABIN651072 and ABIN2840059) in mouse spleen tissue lysates (35 µg/lane). PLA2G1B (arrow) was detected using the purified Pab.



Western Blotting

Image 3. Western blot analysis of PLA2G1B (arrow) using rabbit polyclonal PLA2G1B Antibody (C-term) (ABIN651072 and ABIN2840059). 293 cell lysates (2 µg/lane) either nontransfected (Lane 1) or transiently transfected (Lane 2) with the PLA2G1B gene.