

Datasheet for ABIN651081

**anti-Gasdermin A antibody (N-Term)****3** Images[Go to Product page](#)

## Overview

Quantity:	400 µL
Target:	Gasdermin A (GSDMA)
Binding Specificity:	AA 66-94, N-Term
Reactivity:	Human, Mouse
Host:	Rabbit
Clonality:	Polyclonal
Conjugate:	This Gasdermin A antibody is un-conjugated
Application:	Western Blotting (WB), Flow Cytometry (FACS), Immunohistochemistry (Paraffin-embedded Sections) (IHC (p))

## Product Details

Immunogen:	This GSDMA antibody is generated from rabbits immunized with a KLH conjugated synthetic peptide between 66-94 amino acids from the N-terminal region of human GSDMA.
Clone:	RB24996
Isotype:	Ig Fraction
Purification:	This antibody is purified through a protein A column, followed by peptide affinity purification.

## Target Details

Target:	Gasdermin A (GSDMA)
Alternative Name:	GSDMA ( <a href="#">GSDMA Products</a> )

## Target Details

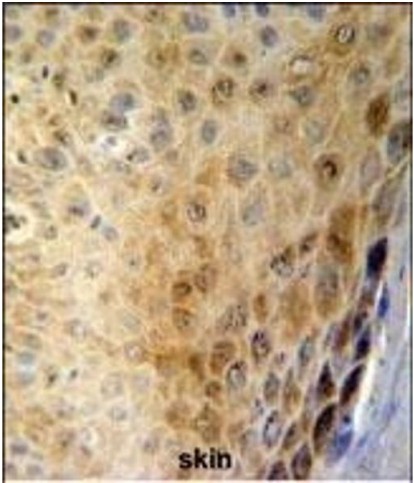
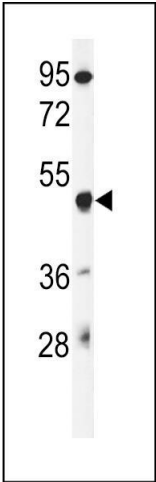
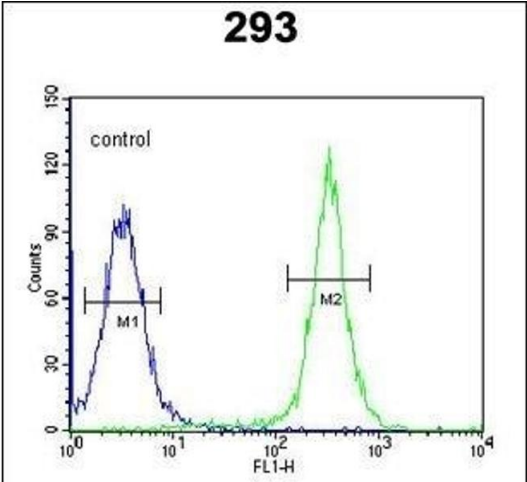
Background:	GSDMA induces apoptosis.
Molecular Weight:	49365
Gene ID:	284110
NCBI Accession:	<a href="#">NP_835465</a>
UniProt:	<a href="#">Q96QA5</a>

## Application Details

Application Notes:	WB: 1:1000. IHC-P: 1:50~100. FC: 1:10~50
Restrictions:	For Research Use only

## Handling

Format:	Liquid
Buffer:	Purified polyclonal antibody supplied in PBS with 0.09 % (W/V) sodium azide.
Preservative:	Sodium azide
Precaution of Use:	This product contains Sodium azide: a POISONOUS AND HAZARDOUS SUBSTANCE which should be handled by trained staff only.
Storage:	4 °C,-20 °C
Storage Comment:	Maintain refrigerated at 2-8 °C for up to 6 months. For long term storage store at -20 °C in small aliquots to prevent freeze-thaw cycles.
Expiry Date:	6 months



### Flow Cytometry

**Image 1.** GSD Antibody (N-term) (ABIN651081 and ABIN2840063) flow cytometric analysis of 293 cells (right histogram) compared to a negative control cell (left histogram). FITC-conjugated goat-anti-rabbit secondary antibodies were used for the analysis.

### Western Blotting

**Image 2.** Western blot analysis of GSD Antibody (N-term) (ABIN651081 and ABIN2840063) in mouse liver tissue lysates (35 µg/lane). GSD (arrow) was detected using the purified Pab.

### Immunohistochemistry (Paraffin-embedded Sections)

**Image 3.** GSD Antibody (N-term) (ABIN651081 and ABIN2840063) IHC analysis in formalin fixed and paraffin embedded human skin carcinoma followed by peroxidase conjugation of the secondary antibody and DAB staining. This data demonstrates the use of the GSD Antibody (N-term) for immunohistochemistry. Clinical relevance has not been evaluated.