

Datasheet for ABIN651086  
**anti-ERMN antibody (AA 113-141)**[Go to Product page](#)

## 2 Images

## Overview

Quantity:	400 µL
Target:	ERMN
Binding Specificity:	AA 113-141
Reactivity:	Human
Host:	Rabbit
Clonality:	Polyclonal
Conjugate:	This ERMN antibody is un-conjugated
Application:	Western Blotting (WB), Flow Cytometry (FACS)

## Product Details

Immunogen:	This ERMN antibody is generated from rabbits immunized with a KLH conjugated synthetic peptide between 113-141 amino acids from the Central region of human ERMN.
Clone:	RB25523
Isotype:	Ig Fraction
Purification:	This antibody is purified through a protein A column, followed by peptide affinity purification.

## Target Details

Target:	ERMN
Alternative Name:	ERMIN ( <a href="#">ERMN Products</a> )
Background:	ERMIN plays a role in cytoskeletal rearrangements during the late wrapping and/or compaction

## Target Details

phases of myelinogenesis as well as in maintenance and stability of myelin sheath in the adult. ERMIN may play an important role in late-stage oligodendroglia maturation, myelin/Ranvier node formation during CNS development, and in the maintenance and plasticity of related structures in the mature CNS.

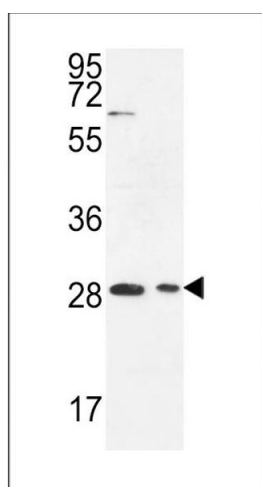
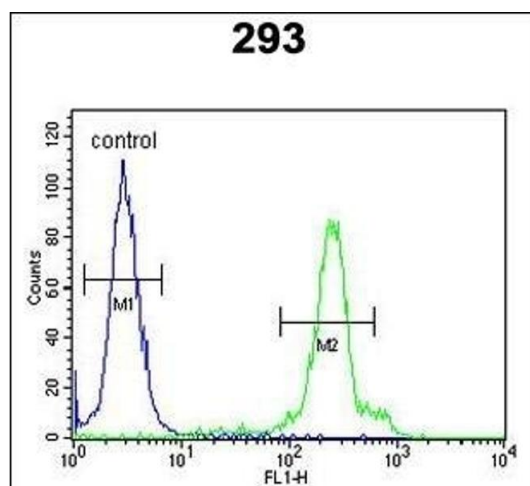
Molecular Weight:	32783
Gene ID:	57471
NCBI Accession:	<a href="#">NP_001009959</a> , <a href="#">NP_065762</a>
UniProt:	<a href="#">Q8TAM6</a>

## Application Details

Application Notes:	WB: 1:1000. FC: 1:10~50
Restrictions:	For Research Use only

## Handling

Format:	Liquid
Buffer:	Purified polyclonal antibody supplied in PBS with 0.09 % (W/V) sodium azide.
Preservative:	Sodium azide
Precaution of Use:	This product contains Sodium azide: a POISONOUS AND HAZARDOUS SUBSTANCE which should be handled by trained staff only.
Storage:	4 °C,-20 °C
Storage Comment:	Maintain refrigerated at 2-8 °C for up to 6 months. For long term storage store at -20 °C in small aliquots to prevent freeze-thaw cycles.
Expiry Date:	6 months



### Flow Cytometry

**Image 1.** ERMIN Antibody (Center) (ABIN651086 and ABIN2840065) flow cytometric analysis of 293 cells (right histogram) compared to a negative control cell (left histogram). FITC-conjugated goat-anti-rabbit secondary antibodies were used for the analysis.

### Western Blotting

**Image 2.** ERMIN Antibody (Center) (ABIN651086 and ABIN2840065) western blot analysis in Jurkat, 293 cell line lysates (35  $\mu$ g/lane). This demonstrates the ERMIN antibody detected the ERMIN protein (arrow).