

Datasheet for ABIN651090
anti-HIST1H2AL antibody (C-Term)[Go to Product page](#)

3 Images

Overview

Quantity:	400 µL
Target:	HIST1H2AL
Binding Specificity:	AA 103-130, C-Term
Reactivity:	Human
Host:	Rabbit
Clonality:	Polyclonal
Conjugate:	This HIST1H2AL antibody is un-conjugated
Application:	Western Blotting (WB), Flow Cytometry (FACS), Immunohistochemistry (Paraffin-embedded Sections) (IHC (p))

Product Details

Immunogen:	This HIST1H2AL antibody is generated from rabbits immunized with a KLH conjugated synthetic peptide between 103-130 amino acids from the C-terminal region of human HIST1H2AL.
Clone:	RB25601
Isotype:	Ig Fraction
Predicted Reactivity:	M, Rat, B
Purification:	This antibody is purified through a protein A column, followed by peptide affinity purification.

Target Details

Target:	HIST1H2AL
---------	-----------

Target Details

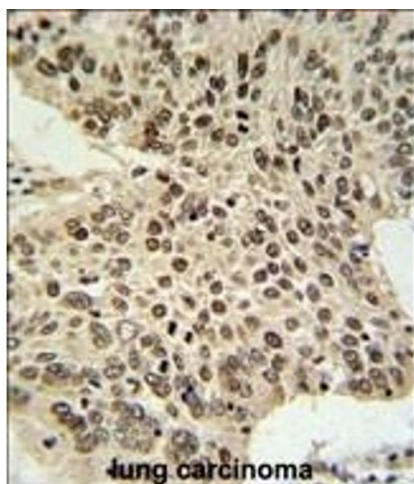
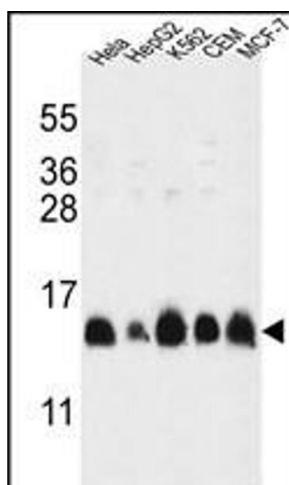
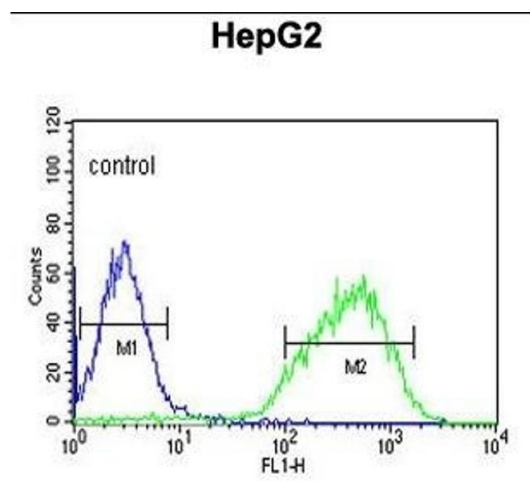
Alternative Name:	HIST1H2AL (HIST1H2AL Products)
Background:	Histones are basic nuclear proteins that are responsible for the nucleosome structure of the chromosomal fiber in eukaryotes. Two molecules of each of the four core histones (H2A, H2B, H3, and H4) form an octamer, around which approximately 146 bp of DNA is wrapped in repeating units, called nucleosomes. The linker histone, H1, interacts with linker DNA between nucleosomes and functions in the compaction of chromatin into higher order structures. This gene is intronless and encodes a member of the histone H2A family. Transcripts from this gene lack polyA tails but instead contain a palindromic termination element. This gene is found in the small histone gene cluster on chromosome 6p22-p21.3.
Molecular Weight:	14091
Gene ID:	8969
NCBI Accession:	NP_003500 , NP_003501 , NP_003502 , NP_003505 , NP_066408
UniProt:	P0C0S8

Application Details

Application Notes:	WB: 1:1000. IHC-P: 1:50~100. FC: 1:10~50
Restrictions:	For Research Use only

Handling

Format:	Liquid
Buffer:	Purified polyclonal antibody supplied in PBS with 0.09 % (W/V) sodium azide.
Preservative:	Sodium azide
Precaution of Use:	This product contains Sodium azide: a POISONOUS AND HAZARDOUS SUBSTANCE which should be handled by trained staff only.
Storage:	4 °C, -20 °C
Storage Comment:	Maintain refrigerated at 2-8 °C for up to 6 months. For long term storage store at -20 °C in small aliquots to prevent freeze-thaw cycles.
Expiry Date:	6 months



Flow Cytometry

Image 1. HIST1H2AL Antibody (C-term) (ABIN651090 and ABIN2840066) flow cytometric analysis of HepG2 cells (right histogram) compared to a negative control cell (left histogram). FITC-conjugated goat-anti-rabbit secondary antibodies were used for the analysis.

Western Blotting

Image 2. HIST1H2AL Antibody (C-term) (ABIN651090 and ABIN2840066) western blot analysis in HL-60, HepG2, K562, CEM, MCF-7 cell line lysates (35 μ g/lane). This demonstrates the HIST1H2AL antibody detected the HIST1H2AL protein (arrow).

Immunohistochemistry (Paraffin-embedded Sections)

Image 3. HIST1H2AL Antibody (C-term) (ABIN651090 and ABIN2840066) IHC analysis in formalin fixed and paraffin embedded human lung carcinoma followed by peroxidase conjugation of the secondary antibody and DAB staining. This data demonstrates the use of the HIST1H2AL Antibody (C-term) for immunohistochemistry. Clinical relevance has not been evaluated.