

Datasheet for ABIN651094
anti-MICALL2 antibody (C-Term)[Go to Product page](#)

3 Images

Overview

Quantity:	400 µL
Target:	MICALL2
Binding Specificity:	AA 841-870, C-Term
Reactivity:	Human
Host:	Rabbit
Clonality:	Polyclonal
Conjugate:	This MICALL2 antibody is un-conjugated
Application:	Western Blotting (WB), Flow Cytometry (FACS), Immunohistochemistry (Paraffin-embedded Sections) (IHC (p))

Product Details

Immunogen:	This MILK2 antibody is generated from rabbits immunized with a KLH conjugated synthetic peptide between 841-870 amino acids from the C-terminal region of human MILK2.
Clone:	RB25630
Isotype:	Ig Fraction
Purification:	This antibody is purified through a protein A column, followed by peptide affinity purification.

Target Details

Target:	MICALL2
Alternative Name:	MILK2 (MICALL2 Products)

Target Details

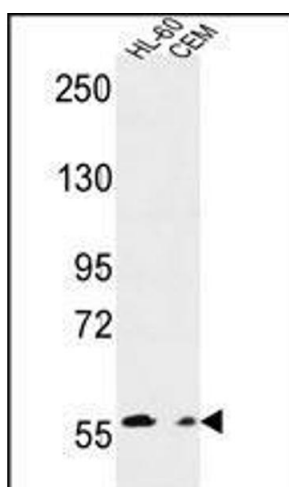
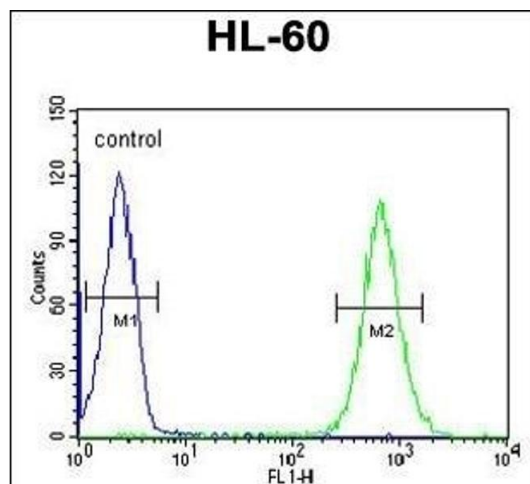
Background:	MILK2 may be a cytoskeletal regulator.
Molecular Weight:	97502
Gene ID:	79778
NCBI Accession:	NP_891554
UniProt:	Q8IY33

Application Details

Application Notes:	WB: 1:1000. IHC-P: 1:50~100. FC: 1:10~50
Restrictions:	For Research Use only

Handling

Format:	Liquid
Buffer:	Purified polyclonal antibody supplied in PBS with 0.09 % (W/V) sodium azide.
Preservative:	Sodium azide
Precaution of Use:	This product contains Sodium azide: a POISONOUS AND HAZARDOUS SUBSTANCE which should be handled by trained staff only.
Storage:	4 °C,-20 °C
Storage Comment:	Maintain refrigerated at 2-8 °C for up to 6 months. For long term storage store at -20 °C in small aliquots to prevent freeze-thaw cycles.
Expiry Date:	6 months



Flow Cytometry

Image 1. MILK2 Antibody (C-term) (ABIN651094 and ABIN2840068) flow cytometric analysis of HL-60 cells (right histogram) compared to a negative control cell (left histogram). FITC-conjugated goat-anti-rabbit secondary antibodies were used for the analysis.

Western Blotting

Image 2. MILK2 Antibody (C-term) (ABIN651094 and ABIN2840068) western blot analysis in HL-60, CEM cell line lysates (35 µg/lane). This demonstrates the MILK2 antibody detected the MILK2 protein (arrow).

Immunohistochemistry (Paraffin-embedded Sections)

Image 3. MILK2 Antibody (C-term) (ABIN651094 and ABIN2840068) IHC analysis in formalin fixed and paraffin embedded human brain tissue followed by peroxidase conjugation of the secondary antibody and DAB staining. This data demonstrates the use of the MILK2 Antibody (C-term) for immunohistochemistry. Clinical relevance has not been evaluated.