

Datasheet for ABIN651103  
**anti-NASP antibody (N-Term)**[Go to Product page](#)

## 3 Images

## Overview

Quantity:	400 µL
Target:	NASP
Binding Specificity:	AA 152-180, N-Term
Reactivity:	Human
Host:	Rabbit
Clonality:	Polyclonal
Conjugate:	This NASP antibody is un-conjugated
Application:	Western Blotting (WB), Flow Cytometry (FACS)

## Product Details

Immunogen:	This NASP antibody is generated from rabbits immunized with a KLH conjugated synthetic peptide between 152-180 amino acids from the N-terminal region of human NASP.
Clone:	RB15561
Isotype:	Ig Fraction
Purification:	This antibody is prepared by Saturated Ammonium Sulfate (SAS) precipitation followed by dialysis against PBS.

## Target Details

Target:	NASP
Alternative Name:	NASP ( <a href="#">NASP Products</a> )

## Target Details

**Background:** NASP encodes a H1 histone binding protein that is involved in transporting histones into the nucleus of dividing cells. Multiple isoforms are encoded by transcript variants of this gene. The somatic form is expressed in all mitotic cells, is localized to the nucleus, and is coupled to the cell cycle. The testicular form is expressed in embryonic tissues, tumor cells, and the testis. In male germ cells, this protein is localized to the cytoplasm of primary spermatocytes, the nucleus of spermatids, and the periacrosomal region of mature spermatozoa.

**Molecular Weight:** 85238

**Gene ID:** 4678

**NCBI Accession:** [NP\\_001182122](#), [NP\\_002473](#), [NP\\_689511](#)

**UniProt:** [P49321](#)

## Application Details

**Application Notes:** WB: 1:1000. WB: 1:1000. FC: 1:10~50

**Restrictions:** For Research Use only

## Handling

**Format:** Liquid

**Buffer:** Purified polyclonal antibody supplied in PBS with 0.09 % (W/V) sodium azide.

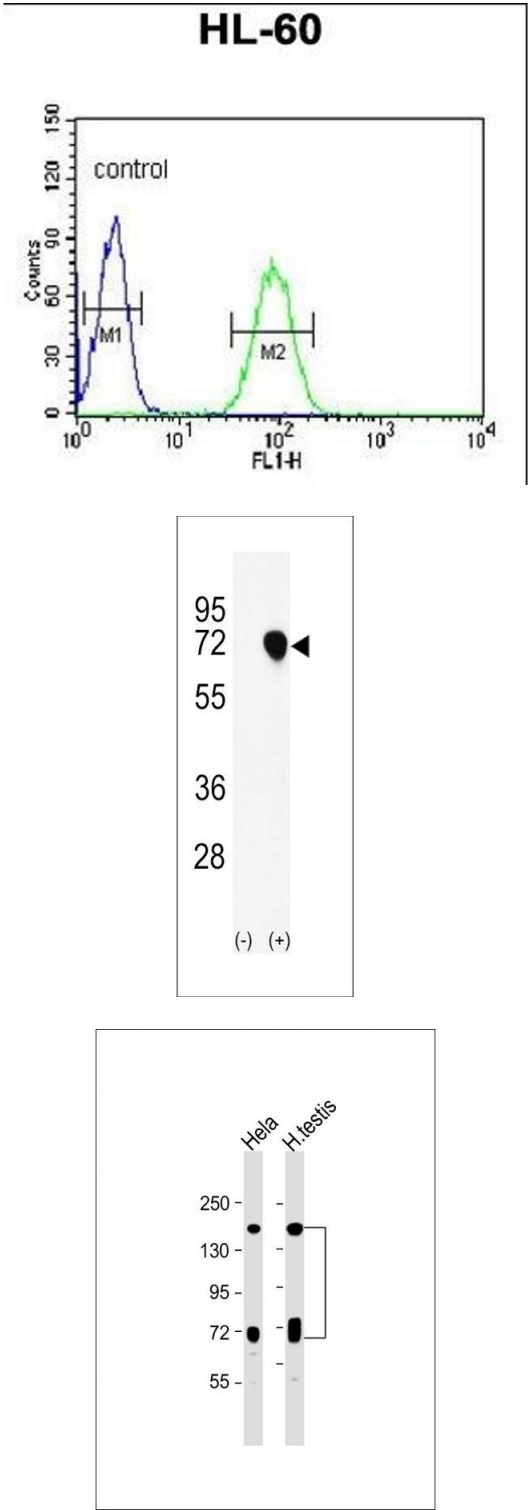
**Preservative:** Sodium azide

**Precaution of Use:** This product contains Sodium azide: a POISONOUS AND HAZARDOUS SUBSTANCE which should be handled by trained staff only.

**Storage:** 4 °C, -20 °C

**Storage Comment:** Maintain refrigerated at 2-8 °C for up to 6 months. For long term storage store at -20 °C in small aliquots to prevent freeze-thaw cycles.

**Expiry Date:** 6 months



Flow Cytometry

**Image 1.** NASP Antibody (N-term) (ABIN651103 and ABIN2840071) flow cytometric analysis of HL-60 cells (right histogram) compared to a negative control cell (left histogram). FITC-conjugated goat-anti-rabbit secondary antibodies were used for the analysis.

Western Blotting

**Image 2.** Western blot analysis of NASP (arrow) using rabbit polyclonal NASP Antibody (N-term) (ABIN651103 and ABIN2840071). 293 cell lysates (2 µg/lane) either nontransfected (Lane 1) or transiently transfected with the NASP gene (Lane 2).

Western Blotting

**Image 3.** All lanes : Anti-NASP Antibody (N-term) at 1:1000 dilution Lane 1: Hela whole cell lysate Lane 2: human testis lysate Lysates/proteins at 20 µg per lane. Secondary Goat Anti-Rabbit IgG, (H+L), Peroxidase conjugated at 1/10000 dilution. Predicted band size : 85 kDa Blocking/Dilution buffer: 5 % NFDM/TBST.