



[Go to Product page](#)

Datasheet for ABIN651112

anti-PLA2G4B antibody (AA 396-424)

2 Images

Overview

Quantity:	400 µL
Target:	PLA2G4B
Binding Specificity:	AA 396-424
Reactivity:	Human
Host:	Rabbit
Clonality:	Polyclonal
Conjugate:	This PLA2G4B antibody is un-conjugated
Application:	Western Blotting (WB), Flow Cytometry (FACS)

Product Details

Immunogen:	This PLA2G4B antibody is generated from rabbits immunized with a KLH conjugated synthetic peptide between 396-424 amino acids from the Central region of human PLA2G4B.
Clone:	RB21321
Isotype:	Ig Fraction
Purification:	This antibody is purified through a protein A column, followed by peptide affinity purification.

Target Details

Target:	PLA2G4B
Alternative Name:	PLA2G4B (PLA2G4B Products)
Background:	PLA2G4B transcribes naturally-occurring mRNAs that are co-transcribed products of the

Target Details

neighboring JMJD7 and PLA2G4B genes. Incompletely processed read-through transcripts from these two loci are abundantly expressed in most tissues, but the function of the predicted protein product has not yet been determined.

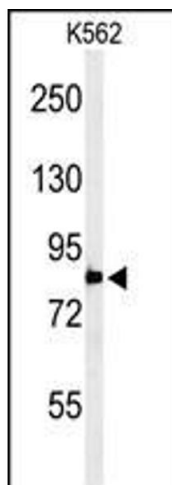
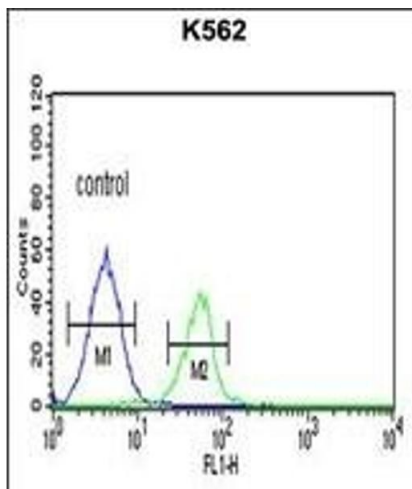
Molecular Weight:	87978
Gene ID:	100137049
NCBI Accession:	NP_001108105 , NP_001185517 , NP_005081
UniProt:	P0C869
Pathways:	ER-Nucleus Signaling , VEGF Signaling

Application Details

Application Notes:	WB: 1:1000. FC: 1:10~50
Restrictions:	For Research Use only

Handling

Format:	Liquid
Buffer:	Purified polyclonal antibody supplied in PBS with 0.09 % (W/V) sodium azide.
Preservative:	Sodium azide
Precaution of Use:	This product contains Sodium azide: a POISONOUS AND HAZARDOUS SUBSTANCE which should be handled by trained staff only.
Storage:	4 °C,-20 °C
Storage Comment:	Maintain refrigerated at 2-8 °C for up to 6 months. For long term storage store at -20 °C in small aliquots to prevent freeze-thaw cycles.
Expiry Date:	6 months



Flow Cytometry

Image 1. PLA2G4B Antibody (Center) (ABIN651112 and ABIN2840078) flow cytometric analysis of K562 cells (right histogram) compared to a negative control cell (left histogram). FITC-conjugated goat-anti-rabbit secondary antibodies were used for the analysis.

Western Blotting

Image 2. Western blot analysis of PLA2G4B Antibody (Center) (ABIN651112 and ABIN2840078) in K562 cell line lysates (35 µg/lane). PLA2G4B (arrow) was detected using the purified Pab.