

Datasheet for ABIN651116
anti-ENPP7 antibody (AA 286-313)

2 Images

[Go to Product page](#)

Overview

Quantity:	400 µL
Target:	ENPP7
Binding Specificity:	AA 286-313
Reactivity:	Human
Host:	Rabbit
Clonality:	Polyclonal
Conjugate:	This ENPP7 antibody is un-conjugated
Application:	Western Blotting (WB), Flow Cytometry (FACS)

Product Details

Immunogen:	This ENPP7 antibody is generated from rabbits immunized with a KLH conjugated synthetic peptide between 286-313 amino acids from the Central region of human ENPP7.
Clone:	RB25609
Isotype:	Ig Fraction
Purification:	This antibody is purified through a protein A column, followed by peptide affinity purification.

Target Details

Target:	ENPP7
Alternative Name:	ENPP7 (ENPP7 Products)
Background:	ENPP7 converts sphingomyelin to ceramide. ENPP7 also has phospholipase C activity toward

Target Details

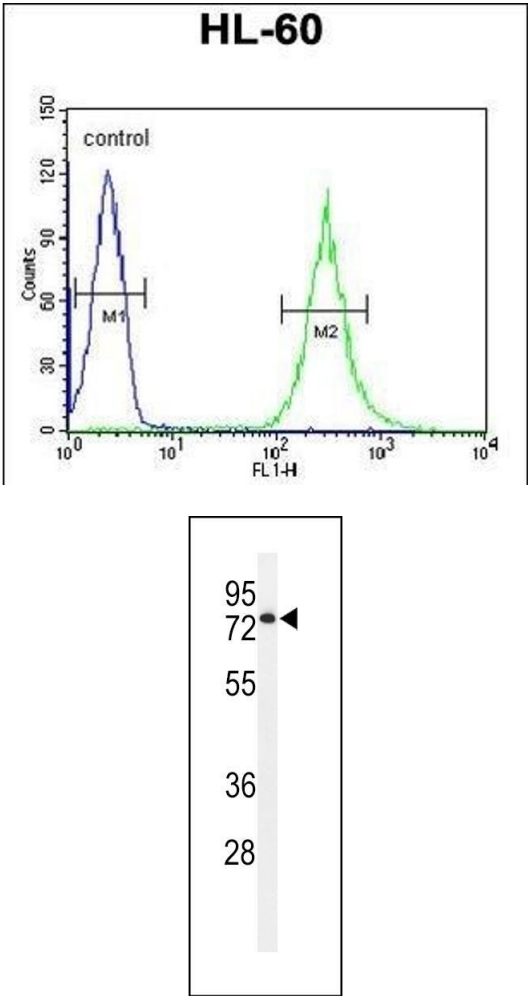
	palmitoyl lyso-phosphocholine. ENPP7 does not appear to have nucleotide pyrophosphatase activity.
Molecular Weight:	51494
Gene ID:	339221
NCBI Accession:	NP_848638
UniProt:	Q6UWV6

Application Details

Application Notes:	WB: 1:1000. FC: 1:10~50
Restrictions:	For Research Use only

Handling

Format:	Liquid
Buffer:	Purified polyclonal antibody supplied in PBS with 0.09 % (W/V) sodium azide.
Preservative:	Sodium azide
Precaution of Use:	This product contains Sodium azide: a POISONOUS AND HAZARDOUS SUBSTANCE which should be handled by trained staff only.
Storage:	4 °C,-20 °C
Storage Comment:	Maintain refrigerated at 2-8 °C for up to 6 months. For long term storage store at -20 °C in small aliquots to prevent freeze-thaw cycles.
Expiry Date:	6 months



Flow Cytometry

Image 1. EN Antibody (Center) (ABIN651116 and ABIN2840082) flow cytometric analysis of HL-60 cells (right histogram) compared to a negative control cell (left histogram).FITC-conjugated goat-anti-rabbit secondary antibodies were used for the analysis.

Western Blotting

Image 2. Western blot analysis of EN Antibody (Center) (ABIN651116 and ABIN2840082) in HL-60 cell line lysates (35 µg/lane). EN (arrow) was detected using the purified Pab.