

Datasheet for ABIN651123
anti-FCGR1A antibody (AA 217-245)

3 Images

[Go to Product page](#)

Overview

Quantity:	400 µL
Target:	FCGR1A
Binding Specificity:	AA 217-245
Reactivity:	Human
Host:	Rabbit
Clonality:	Polyclonal
Conjugate:	This FCGR1A antibody is un-conjugated
Application:	Flow Cytometry (FACS), Western Blotting (WB), Immunohistochemistry (Paraffin-embedded Sections) (IHC (p))

Product Details

Immunogen:	This FCGR1A antibody is generated from rabbits immunized with a KLH conjugated synthetic peptide between 217-245 amino acids from the Central region of human FCGR1A.
Clone:	RB24072
Isotype:	Ig Fraction
Purification:	This antibody is purified through a protein A column, followed by peptide affinity purification.

Target Details

Target:	FCGR1A
Alternative Name:	FCGR1A (FCGR1A Products)

Target Details

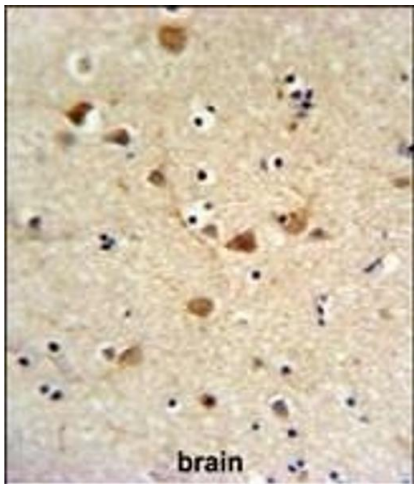
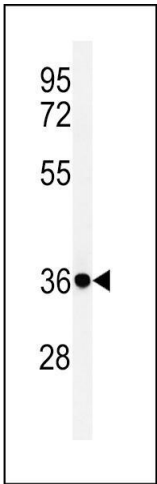
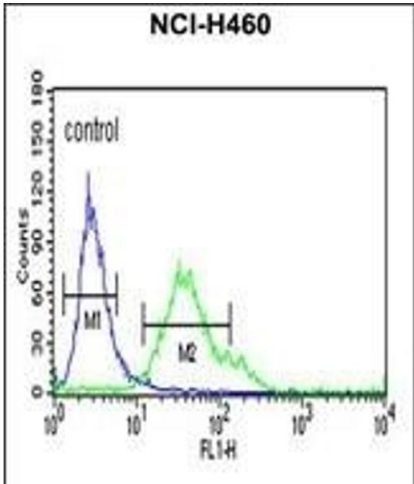
Background:	FCGR1A encodes a protein that plays an important role in the immune response. This protein is a high-affinity Fc-gamma receptor. The gene is one of three related gene family members located on chromosome 1.
Molecular Weight:	42632
Gene ID:	2209
NCBI Accession:	NP_000557
UniProt:	P12314
Pathways:	Regulation of Leukocyte Mediated Immunity , Positive Regulation of Immune Effector Process

Application Details

Application Notes:	WB: 1:1000. IHC-P: 1:50~100. FC: 1:10~50
Restrictions:	For Research Use only

Handling

Format:	Liquid
Buffer:	Purified polyclonal antibody supplied in PBS with 0.09 % (W/V) sodium azide.
Preservative:	Sodium azide
Precaution of Use:	This product contains Sodium azide: a POISONOUS AND HAZARDOUS SUBSTANCE which should be handled by trained staff only.
Storage:	4 °C,-20 °C
Storage Comment:	Maintain refrigerated at 2-8 °C for up to 6 months. For long term storage store at -20 °C in small aliquots to prevent freeze-thaw cycles.
Expiry Date:	6 months



Flow Cytometry

Image 1. FCGR1A Antibody (Center) (ABIN651123 and ABIN2840085) flow cytometric analysis of NCI- cells (right histogram) compared to a negative control cell (left histogram). FITC-conjugated goat-anti-rabbit secondary antibodies were used for the analysis.

Western Blotting

Image 2. Western blot analysis of FCGR1A Antibody (Center) (ABIN651123 and ABIN2840085) in NCI- cell line lysates (35 µg/lane). FCGR1A (arrow) was detected using the purified Pab.

Immunohistochemistry (Paraffin-embedded Sections)

Image 3. FCGR1A Antibody (Center) (ABIN651123 and ABIN2840085) IHC analysis in formalin fixed and paraffin embedded brain tissue followed by peroxidase conjugation of the secondary antibody and DAB staining. This data demonstrates the use of the FCGR1A Antibody (Center) for immunohistochemistry. Clinical relevance has not been evaluated.