

Datasheet for ABIN651132
anti-PSG7 antibody (C-Term)

3 Images

[Go to Product page](#)

Overview

Quantity:	400 µL
Target:	PSG7
Binding Specificity:	AA 265-293, C-Term
Reactivity:	Human
Host:	Rabbit
Clonality:	Polyclonal
Conjugate:	This PSG7 antibody is un-conjugated
Application:	Western Blotting (WB), Flow Cytometry (FACS), Immunohistochemistry (Paraffin-embedded Sections) (IHC (p))

Product Details

Immunogen:	This PSG7 antibody is generated from rabbits immunized with a KLH conjugated synthetic peptide between 265-293 amino acids from the C-terminal region of human PSG7.
Clone:	RB24912
Isotype:	Ig Fraction
Purification:	This antibody is purified through a protein A column, followed by peptide affinity purification.

Target Details

Target:	PSG7
Alternative Name:	PSG7 (PSG7 Products)

Target Details

Background: PSG7 is a member of the pregnancy-specific glycoprotein (PSG) gene family. The PSG genes are a subgroup of the carcinoembryonic antigen (CEA) family of immunoglobulin-like genes, and are found in a gene cluster at 19q13.1-q13.2 telomeric to another cluster of CEA-related genes. The PSG genes are expressed by placental trophoblasts and released into the maternal circulation during pregnancy, and are thought to be essential for maintenance of normal pregnancy. The reference genome contains a nonsense mutation that disrupts the coding sequence, suggesting that this gene may be evolving into a pseudogene.

Molecular Weight: 47027

Gene ID: 5676

NCBI Accession: [NP_002774](#)

UniProt: [Q13046](#)

Application Details

Application Notes: WB: 1:1000. IHC-P: 1:50~100. FC: 1:10~50

Restrictions: For Research Use only

Handling

Format: Liquid

Buffer: Purified polyclonal antibody supplied in PBS with 0.09 % (W/V) sodium azide.

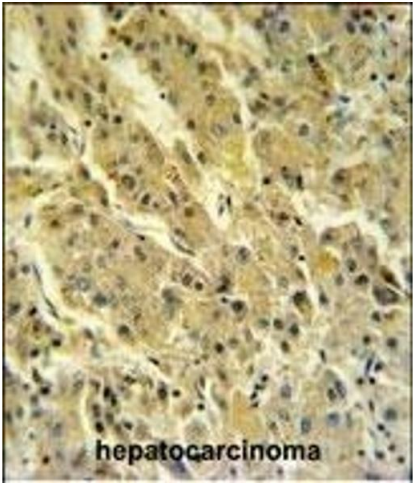
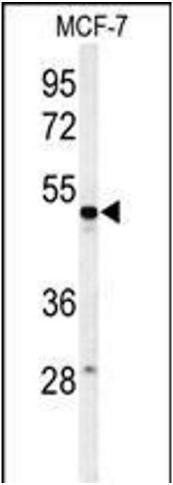
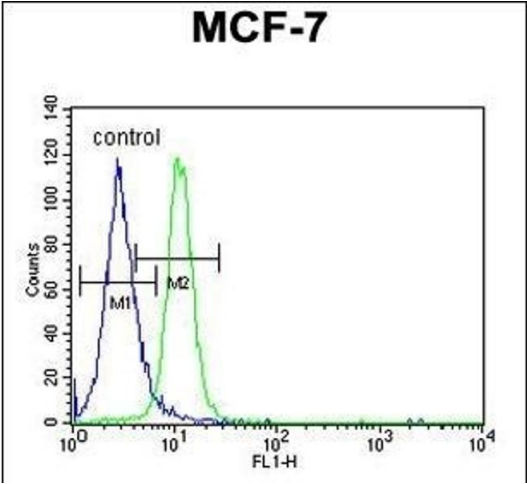
Preservative: Sodium azide

Precaution of Use: This product contains Sodium azide: a POISONOUS AND HAZARDOUS SUBSTANCE which should be handled by trained staff only.

Storage: 4 °C, -20 °C

Storage Comment: Maintain refrigerated at 2-8 °C for up to 6 months. For long term storage store at -20 °C in small aliquots to prevent freeze-thaw cycles.

Expiry Date: 6 months



Flow Cytometry

Image 1. PSG7 Antibody (C-term) (ABIN651132 and ABIN2840089) flow cytometric analysis of MCF-7 cells (right histogram) compared to a negative control cell (left histogram). FITC-conjugated goat-anti-rabbit secondary antibodies were used for the analysis.

Western Blotting

Image 2. Western blot analysis of PSG7 Antibody (C-term) (ABIN651132 and ABIN2840089) in MCF-7 cell line lysates (35 µg/lane). PSG7 (arrow) was detected using the purified Pab.

Immunohistochemistry (Paraffin-embedded Sections)

Image 3. PSG7 Antibody (C-term) (ABIN651132 and ABIN2840089) IHC analysis in formalin fixed and paraffin embedded hepatocarcinoma followed by peroxidase conjugation of the secondary antibody and DAB staining. This data demonstrates the use of the PSG7 Antibody (C-term) for immunohistochemistry. Clinical relevance has not been evaluated.