

Datasheet for ABIN651135
anti-ITPA antibody (N-Term)



[Go to Product page](#)

4 Images

Overview

Quantity:	400 µL
Target:	ITPA
Binding Specificity:	AA 24-51, N-Term
Reactivity:	Human
Host:	Rabbit
Clonality:	Polyclonal
Conjugate:	This ITPA antibody is un-conjugated
Application:	Western Blotting (WB), Immunofluorescence (IF), Flow Cytometry (FACS), Immunohistochemistry (Paraffin-embedded Sections) (IHC (p))

Product Details

Immunogen:	This ITPA antibody is generated from rabbits immunized with a KLH conjugated synthetic peptide between 24-51 amino acids from the N-terminal region of human ITPA.
Clone:	RB22150
Isotype:	Ig Fraction
Predicted Reactivity:	B, C, M, Rat, X
Purification:	This antibody is purified through a protein A column, followed by peptide affinity purification.

Target Details

Target:	ITPA
---------	------

Target Details

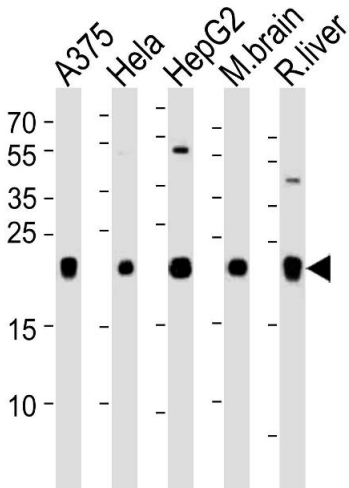
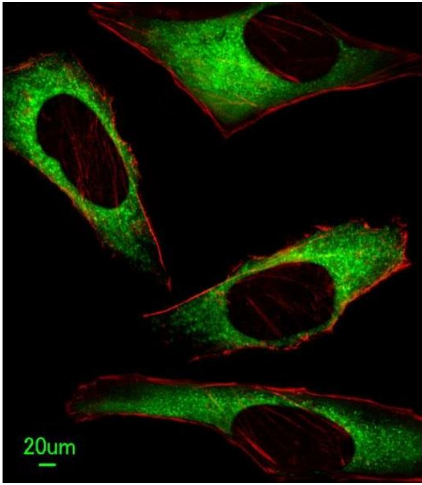
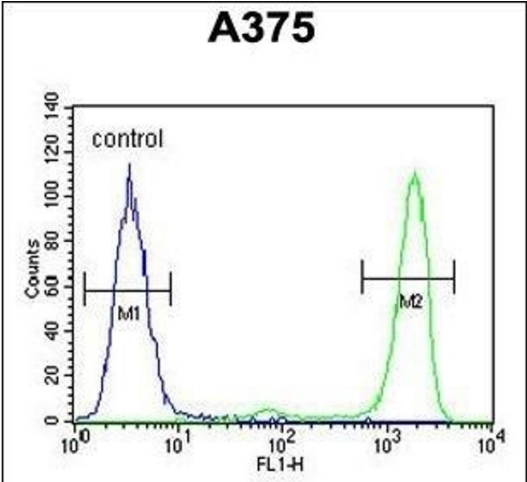
Alternative Name:	ITPA (ITPA Products)
Background:	ITPA hydrolyzes inosine triphosphate and deoxyinosine triphosphate to the monophosphate nucleotide and diphosphate. The encoded protein, which is a member of the HAM1 NTPase protein family, is found in the cytoplasm and acts as a homodimer. Defects in the encoded protein can result in inosine triphosphate pyrophosphorylase deficiency. Two transcript variants encoding two different isoforms have been found for this gene.
Molecular Weight:	21446
Gene ID:	3704
NCBI Accession:	NP_001254552 , NP_258412 , NP_852470
UniProt:	Q9BY32

Application Details

Application Notes:	IF: 1:25. WB: 1:1000. IHC-P: 1:50~100. FC: 1:10~50
Restrictions:	For Research Use only

Handling

Format:	Liquid
Buffer:	Purified polyclonal antibody supplied in PBS with 0.09 % (W/V) sodium azide.
Preservative:	Sodium azide
Precaution of Use:	This product contains Sodium azide: a POISONOUS AND HAZARDOUS SUBSTANCE which should be handled by trained staff only.
Storage:	4 °C, -20 °C
Storage Comment:	Maintain refrigerated at 2-8 °C for up to 6 months. For long term storage store at -20 °C in small aliquots to prevent freeze-thaw cycles.
Expiry Date:	6 months



Flow Cytometry

Image 1. IT Antibody (N-term) (ABIN651135 and ABIN2840091) flow cytometric analysis of cells (right histogram) compared to a negative control cell (left histogram). FITC-conjugated goat-anti-rabbit secondary antibodies were used for the analysis.

Immunofluorescence

Image 2. Immunofluorescent analysis of HeLa cells, using IT Antibody (N-term) (ABIN651135 and ABIN2840091). (ABIN651135 and ABIN2840091) was diluted at 1:25 dilution. Alexa Fluor 488-conjugated goat anti-rabbit IgG at 1:400 dilution was used as the secondary antibody (green). Cytoplasmic actin was counterstained with Dylight Fluor® 554 (red) conjugated Phalloidin (red).

Western Blotting

Image 3. Western blot analysis of lysates from A375, HeLa, HepG2 cell line, mouse brain and rat liver tissue lysate (from left to right), using IT Antibody (N-term) (ABIN651135 and ABIN2840091). (ABIN651135 and ABIN2840091) was diluted at 1:1000 at each lane. A goat anti-rabbit IgG H&L(HRP) at 1:5000 dilution was used as the secondary antibody. Lysates at 35 µg per lane.

Please check the [product details page](#) for more images. Overall 4 images are available for ABIN651135.