

Datasheet for ABIN651140
anti-GTF2IRD2 antibody (C-Term)[Go to Product page](#)

2 Images

Overview

Quantity:	400 µL
Target:	GTF2IRD2
Binding Specificity:	AA 812-841, C-Term
Reactivity:	Human
Host:	Rabbit
Clonality:	Polyclonal
Conjugate:	This GTF2IRD2 antibody is un-conjugated
Application:	Western Blotting (WB), Flow Cytometry (FACS)

Product Details

Immunogen:	This GTD2A antibody is generated from rabbits immunized with a KLH conjugated synthetic peptide between 812-841 amino acids from the C-terminal region of human GTD2A.
Clone:	RB26073
Isotype:	Ig Fraction
Purification:	This antibody is purified through a protein A column, followed by peptide affinity purification.

Target Details

Target:	GTF2IRD2
Alternative Name:	GTD2A (GTF2IRD2 Products)
Background:	GTD2A is unusual in that its coding sequence is mostly derived from Charlie8 repeat elements.

Target Details

However, there is mRNA and EST evidence to suggest that this gene is transcribed, and the encoded protein has a homolog in mouse, with which it shares 78 % sequence identity. The exact function of this gene product is not known. It is inferred to be a transcription factor based on the presence of GTF2I-like repeats (containing helix-loop-helix motifs), also found in other proteins such as GTF2IRD1 and GTF2I. These three genes are clustered together on chr 7q11.23.

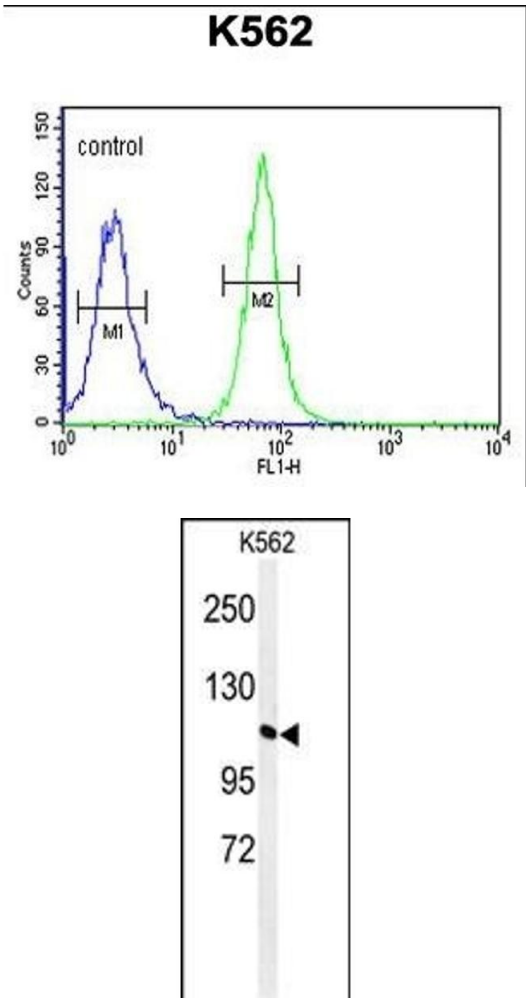
Molecular Weight:	107168
Gene ID:	84163
NCBI Accession:	NP_001268376 , NP_775808
UniProt:	Q86UP8

Application Details

Application Notes:	WB: 1:1000. FC: 1:10~50
Restrictions:	For Research Use only

Handling

Format:	Liquid
Buffer:	Purified polyclonal antibody supplied in PBS with 0.09 % (W/V) sodium azide.
Preservative:	Sodium azide
Precaution of Use:	This product contains Sodium azide: a POISONOUS AND HAZARDOUS SUBSTANCE which should be handled by trained staff only.
Storage:	4 °C, -20 °C
Storage Comment:	Maintain refrigerated at 2-8 °C for up to 6 months. For long term storage store at -20 °C in small aliquots to prevent freeze-thaw cycles.
Expiry Date:	6 months



Flow Cytometry

Image 1. GTD2A Antibody (C-term) (ABIN651140 and ABIN2840094) flow cytometric analysis of K562 cells (right histogram) compared to a negative control cell (left histogram).FITC-conjugated goat-anti-rabbit secondary antibodies were used for the analysis.

Western Blotting

Image 2. Western blot analysis of GTD2A Antibody (C-term) (ABIN651140 and ABIN2840094) in K562 cell line lysates (35 µg/lane). GTD2A (arrow) was detected using the purified Pab.