

Datasheet for ABIN651148
anti-NAT8 antibody (AA 110-138)[2 Images](#)[2 Publications](#)[Go to Product page](#)

Overview

Quantity:	400 µL
Target:	NAT8
Binding Specificity:	AA 110-138
Reactivity:	Human
Host:	Rabbit
Clonality:	Polyclonal
Conjugate:	This NAT8 antibody is un-conjugated
Application:	Western Blotting (WB), Immunohistochemistry (Paraffin-embedded Sections) (IHC (p))

Product Details

Immunogen:	This NAT8 antibody is generated from rabbits immunized with a KLH conjugated synthetic peptide between 110-138 amino acids from the Central region of human NAT8.
Clone:	RB25556
Isotype:	Ig Fraction
Purification:	This antibody is purified through a protein A column, followed by peptide affinity purification.

Target Details

Target:	NAT8
Alternative Name:	NAT8 (NAT8 Products)
Background:	This protein, isolated using the differential display method to detect tissue-specific genes, is

Target Details

specifically expressed in kidney and liver. The encoded protein shows amino acid sequence similarity to N-acetyltransferases. A similar protein in *Xenopus* affects cell adhesion and gastrulation movements, and may be localized in the secretory pathway. A highly similar paralog is found in a cluster with this gene.

Molecular Weight: 25619

Gene ID: 9027

NCBI Accession: [NP_003951](#)

UniProt: [Q9UHE5](#)

Application Details

Application Notes: WB: 1:1000. IHC-P: 1:50~100

Restrictions: For Research Use only

Handling

Format: Liquid

Buffer: Purified polyclonal antibody supplied in PBS with 0.09 % (W/V) sodium azide.

Preservative: Sodium azide

Precaution of Use: This product contains Sodium azide: a POISONOUS AND HAZARDOUS SUBSTANCE which should be handled by trained staff only.

Storage: 4 °C, -20 °C

Storage Comment: Maintain refrigerated at 2-8 °C for up to 6 months. For long term storage store at -20 °C in small aliquots to prevent freeze-thaw cycles.

Expiry Date: 6 months

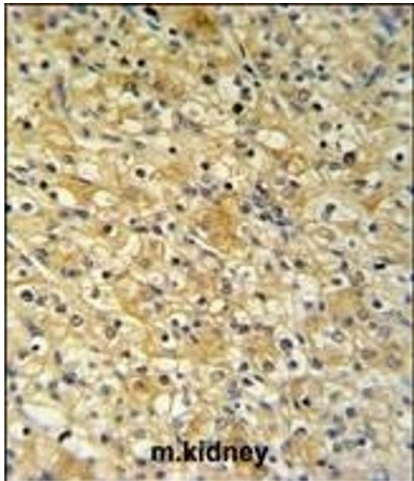
Publications

Product cited in: Ding, Dellisanti, Ko, Czajkowski, Puglielli: "The endoplasmic reticulum-based acetyltransferases, ATase1 and ATase2, associate with the oligosaccharyltransferase to acetylate correctly folded polypeptides." in: **The Journal of biological chemistry**, Vol. 289, Issue 46, pp. 32044-55, (2014) ([PubMed](#)).

Ding, Ko, Pehar, Kotch, Peters, Luo, Salamat, Puglielli: "Biochemical inhibition of the

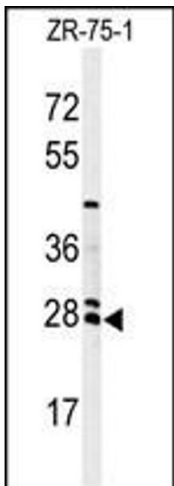
acetyltransferases ATase1 and ATase2 reduces γ -secretase (BACE1) levels and A β generation." in: **The Journal of biological chemistry**, Vol. 287, Issue 11, pp. 8424-33, (2012) ([PubMed](#)).

Images



Immunohistochemistry (Paraffin-embedded Sections)

Image 1. NAT8 Antibody (Center) (ABIN651148 and ABIN2840099) IHC analysis in formalin fixed and paraffin embedded mouse kidney tissue followed by peroxidase conjugation of the secondary antibody and DAB staining. This data demonstrates the use of the NAT8 Antibody (Center) for immunohistochemistry. Clinical relevance has not been evaluated.



Western Blotting

Image 2. Western blot analysis of NAT8 Antibody (Center) (ABIN651148 and ABIN2840099) in ZR-75-1 cell line lysates (35 μ g/lane). NAT8 (arrow) was detected using the purified Pab.