



[Go to Product page](#)

Datasheet for ABIN651159

anti-TMEM30B antibody (N-Term)

3 Images

Overview

Quantity:	400 µL
Target:	TMEM30B
Binding Specificity:	AA 42-71, N-Term
Reactivity:	Human
Host:	Rabbit
Clonality:	Polyclonal
Conjugate:	This TMEM30B antibody is un-conjugated
Application:	Western Blotting (WB), Flow Cytometry (FACS), Immunohistochemistry (Paraffin-embedded Sections) (IHC (p))

Product Details

Immunogen:	This CC50B antibody is generated from rabbits immunized with a KLH conjugated synthetic peptide between 42-71 amino acids from the N-terminal region of human CC50B.
Clone:	RB25806
Isotype:	Ig Fraction
Purification:	This antibody is purified through a protein A column, followed by peptide affinity purification.

Target Details

Target:	TMEM30B
Alternative Name:	CC50B (TMEM30B Products)

Target Details

Molecular Weight:	38941
Gene ID:	161291
NCBI Accession:	NP_001017970
UniProt:	Q3MIR4

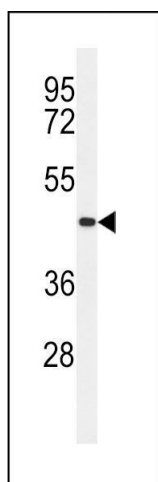
Application Details

Application Notes:	WB: 1:1000. IHC-P: 1:50~100. FC: 1:10~50
Restrictions:	For Research Use only

Handling

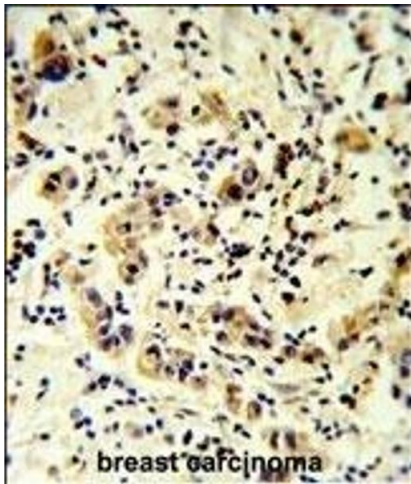
Format:	Liquid
Buffer:	Purified polyclonal antibody supplied in PBS with 0.09 % (W/V) sodium azide.
Preservative:	Sodium azide
Precaution of Use:	This product contains Sodium azide: a POISONOUS AND HAZARDOUS SUBSTANCE which should be handled by trained staff only.
Storage:	4 °C, -20 °C
Storage Comment:	Maintain refrigerated at 2-8 °C for up to 6 months. For long term storage store at -20 °C in small aliquots to prevent freeze-thaw cycles.
Expiry Date:	6 months

Validation report #101148 for Western Blotting (WB)



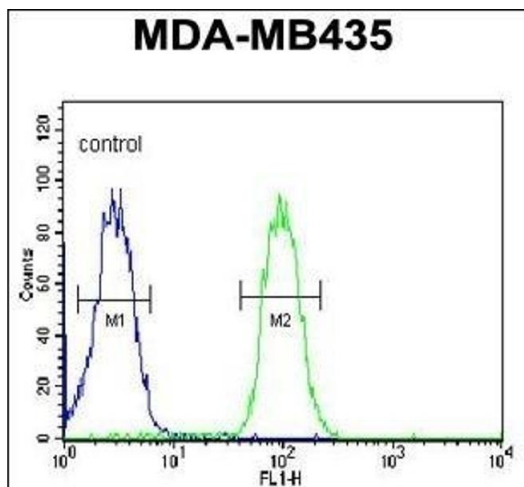
Western Blotting

Image 1. Western blot analysis of CC50B Antibody (N-term) (ABIN651159 and ABIN2840104) in MDA-M cell line lysates (35 µg/lane). CC50B (arrow) was detected using the purified Pab.



Immunohistochemistry (Paraffin-embedded Sections)

Image 2. CC50B Antibody (N-term) (ABIN651159 and ABIN2840104) IHC analysis in formalin fixed and paraffin embedded human breast carcinoma followed by peroxidase conjugation of the secondary antibody and DAB staining. This data demonstrates the use of the CC50B Antibody (N-term) for immunohistochemistry. Clinical relevance has not been evaluated.



Flow Cytometry

Image 3. CC50B Antibody (N-term) (ABIN651159 and ABIN2840104) flow cytometric analysis of MDA-M cells (right histogram) compared to a negative control cell (left histogram). FITC-conjugated goat-anti-rabbit secondary antibodies were used for the analysis.