

Datasheet for ABIN651164
anti-LPPR4 antibody (C-Term)

3 Images

[Go to Product page](#)

Overview

Quantity:	400 µL
Target:	LPPR4
Binding Specificity:	AA 666-695, C-Term
Reactivity:	Human
Host:	Rabbit
Clonality:	Polyclonal
Conjugate:	This LPPR4 antibody is un-conjugated
Application:	Western Blotting (WB), Flow Cytometry (FACS), Immunohistochemistry (Paraffin-embedded Sections) (IHC (p))

Product Details

Immunogen:	This LPPR4 antibody is generated from rabbits immunized with a KLH conjugated synthetic peptide between 666-695 amino acids from the C-terminal region of human LPPR4.
Clone:	RB25865
Isotype:	Ig Fraction
Predicted Reactivity:	M
Purification:	This antibody is purified through a protein A column, followed by peptide affinity purification.

Target Details

Target:	LPPR4
---------	-------

Target Details

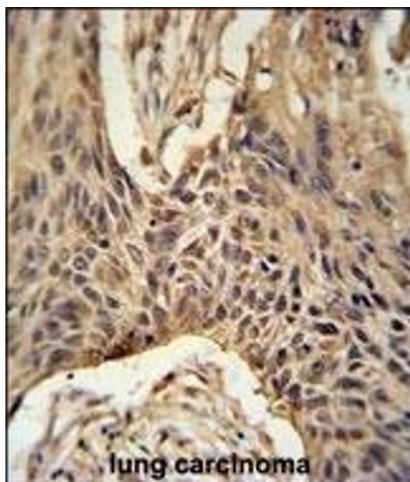
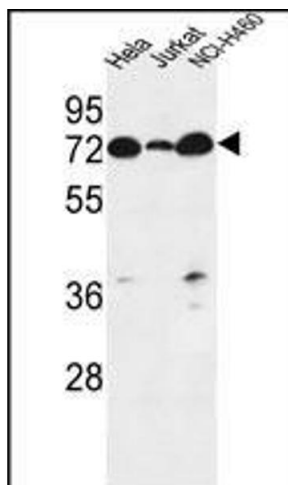
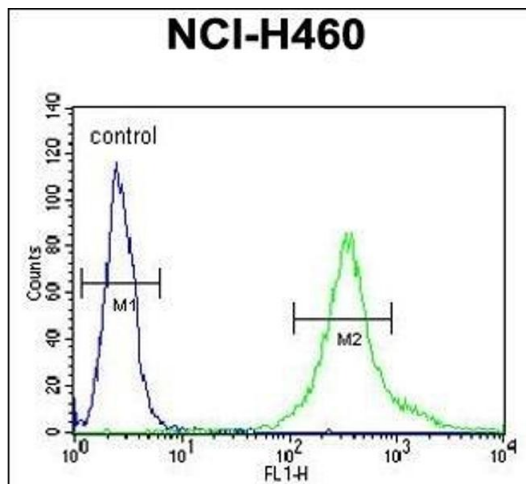
Alternative Name:	LPPR4 (LPPR4 Products)
Background:	LPPR4 belongs to the lipid phosphate phosphatase (LPP) family. LPPs catalyze the dephosphorylation of a number of bioactive lipid mediators that regulate a variety of cell functions. This protein is specifically expressed in neurons. It is located in the membranes of outgrowing axons and has been shown to be important for axonal outgrowth during development and regenerative sprouting.
Molecular Weight:	82983
Gene ID:	9890
NCBI Accession:	NP_001159724 , NP_055654
UniProt:	Q7Z2D5

Application Details

Application Notes:	WB: 1:1000. IHC-P: 1:50~100. FC: 1:10~50
Restrictions:	For Research Use only

Handling

Format:	Liquid
Buffer:	Purified polyclonal antibody supplied in PBS with 0.09 % (W/V) sodium azide.
Preservative:	Sodium azide
Precaution of Use:	This product contains Sodium azide: a POISONOUS AND HAZARDOUS SUBSTANCE which should be handled by trained staff only.
Storage:	4 °C, -20 °C
Storage Comment:	Maintain refrigerated at 2-8 °C for up to 6 months. For long term storage store at -20 °C in small aliquots to prevent freeze-thaw cycles.
Expiry Date:	6 months



Flow Cytometry

Image 1. LR4 Antibody (C-term) (ABIN651164 and ABIN2840106) flow cytometric analysis of NCI- cells (right histogram) compared to a negative control cell (left histogram). FITC-conjugated goat-anti-rabbit secondary antibodies were used for the analysis.

Western Blotting

Image 2. LR4 Antibody (C-term) (ABIN651164 and ABIN2840106) western blot analysis in Hela, Jurkat, NCI- cell line lysates (35 µg/lane). This demonstrates the LR4 antibody detected the LR4 protein (arrow).

Immunohistochemistry (Paraffin-embedded Sections)

Image 3. LR4 Antibody (C-term) (ABIN651164 and ABIN2840106) immunohistochemistry analysis in formalin fixed and paraffin embedded human lung carcinoma followed by peroxidase conjugation of the secondary antibody and DAB staining. This data demonstrates the use of the LR4 Antibody (C-term) for immunohistochemistry. Clinical relevance has not been evaluated.