

Datasheet for ABIN651166  
**anti-PTPLB antibody (C-Term)**

## 3 Images

[Go to Product page](#)

## Overview

Quantity:	400 µL
Target:	PTPLB
Binding Specificity:	AA 226-254, C-Term
Reactivity:	Human
Host:	Rabbit
Clonality:	Polyclonal
Conjugate:	This PTPLB antibody is un-conjugated
Application:	Western Blotting (WB), Flow Cytometry (FACS), Immunohistochemistry (Paraffin-embedded Sections) (IHC (p))

## Product Details

Immunogen:	This PTPLB antibody is generated from rabbits immunized with a KLH conjugated synthetic peptide between 226-254 amino acids from the C-terminal region of human PTPLB.
Clone:	RB26055
Isotype:	Ig Fraction
Predicted Reactivity:	B
Purification:	This antibody is purified through a protein A column, followed by peptide affinity purification.

## Target Details

Target:	PTPLB
---------	-------

## Target Details

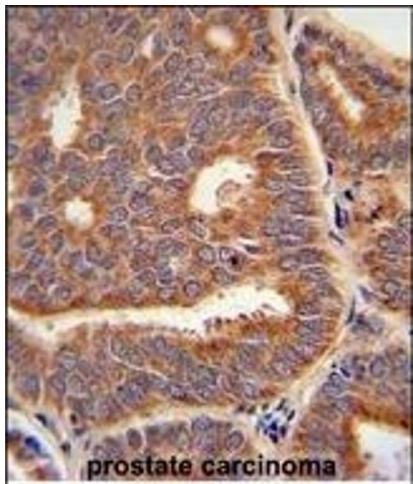
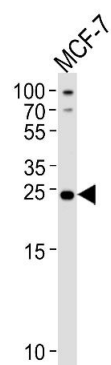
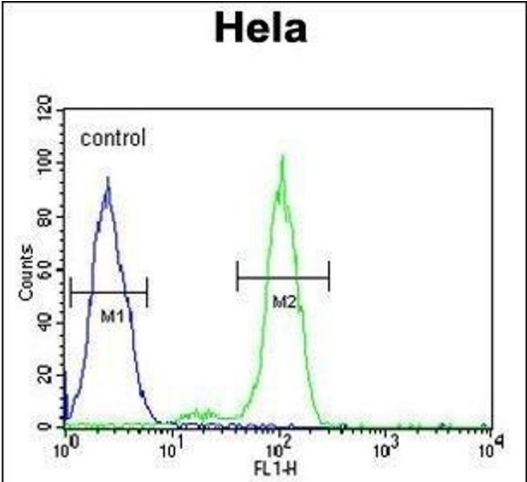
Alternative Name:	PTPLB ( <a href="#">PTPLB Products</a> )
Background:	PTPLB is probable anti-phosphatase.
Molecular Weight:	28368
Gene ID:	201562
NCBI Accession:	<a href="#">NP_940684</a>
UniProt:	<a href="#">Q6Y1H2</a>

## Application Details

Application Notes:	WB: 1:1000. IHC-P: 1:50~100. FC: 1:10~50
Restrictions:	For Research Use only

## Handling

Format:	Liquid
Buffer:	Purified polyclonal antibody supplied in PBS with 0.09 % (W/V) sodium azide.
Preservative:	Sodium azide
Precaution of Use:	This product contains Sodium azide: a POISONOUS AND HAZARDOUS SUBSTANCE which should be handled by trained staff only.
Storage:	4 °C,-20 °C
Storage Comment:	Maintain refrigerated at 2-8 °C for up to 6 months. For long term storage store at -20 °C in small aliquots to prevent freeze-thaw cycles.
Expiry Date:	6 months



### Flow Cytometry

**Image 1.** PTPLB Antibody (C-term) (ABIN651166 and ABIN2840107) flow cytometric analysis of Hela cells (right histogram) compared to a negative control cell (left histogram). FITC-conjugated goat-anti-rabbit secondary antibodies were used for the analysis.

### Western Blotting

**Image 2.** Western blot analysis of lysate from MCF-7 cell line, using PTPLB Antibody (C-term) (ABIN651166 and ABIN2840107). (ABIN651166 and ABIN2840107) was diluted at 1:1000 at each lane. A goat anti-rabbit IgG H&L(HRP) at 1:5000 dilution was used as the secondary antibody. Lysate at 35 µg per lane.

### Immunohistochemistry (Paraffin-embedded Sections)

**Image 3.** PTPLB Antibody (C-term) (ABIN651166 and ABIN2840107) immunohistochemistry analysis in formalin fixed and paraffin embedded human prostate carcinoma followed by peroxidase conjugation of the secondary antibody and DAB staining. This data demonstrates the use of the PTPLB Antibody (C-term) for immunohistochemistry. Clinical relevance has not been evaluated.