

Datasheet for ABIN651168
anti-SMPDL3A antibody (C-Term)

3 Images

[Go to Product page](#)

Overview

Quantity:	400 µL
Target:	SMPDL3A
Binding Specificity:	AA 321-349, C-Term
Reactivity:	Human
Host:	Rabbit
Clonality:	Polyclonal
Conjugate:	This SMPDL3A antibody is un-conjugated
Application:	Western Blotting (WB), Flow Cytometry (FACS), Immunohistochemistry (Paraffin-embedded Sections) (IHC (p))

Product Details

Immunogen:	This ASM3A antibody is generated from rabbits immunized with a KLH conjugated synthetic peptide between 321-349 amino acids from the C-terminal region of human ASM3A.
Clone:	RB25681
Isotype:	Ig Fraction
Predicted Reactivity:	B
Purification:	This antibody is purified through a protein A column, followed by peptide affinity purification.

Target Details

Target:	SMPDL3A
---------	---------

Target Details

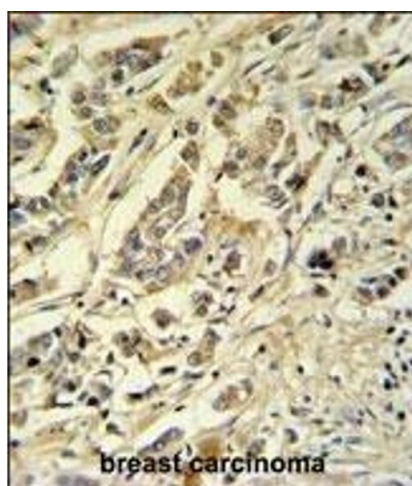
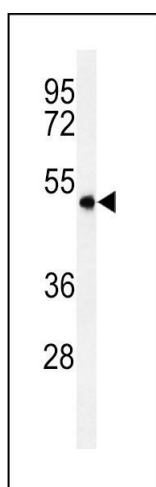
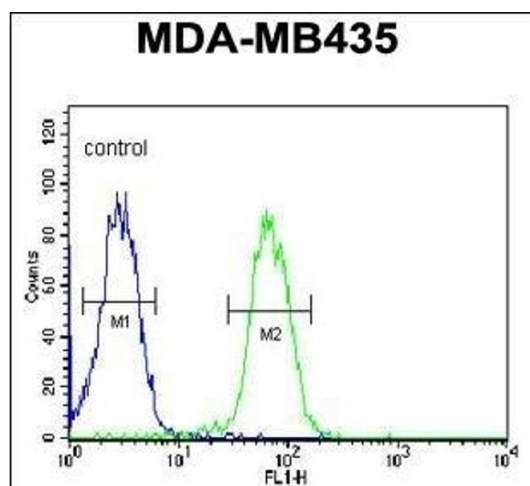
Alternative Name:	ASM3A (SMPDL3A Products)
Molecular Weight:	51260
Gene ID:	10924
NCBI Accession:	NP_006705
UniProt:	Q92484

Application Details

Application Notes:	WB: 1:1000. IHC-P: 1:50~100. FC: 1:10~50
Restrictions:	For Research Use only

Handling

Format:	Liquid
Buffer:	Purified polyclonal antibody supplied in PBS with 0.09 % (W/V) sodium azide.
Preservative:	Sodium azide
Precaution of Use:	This product contains Sodium azide: a POISONOUS AND HAZARDOUS SUBSTANCE which should be handled by trained staff only.
Storage:	4 °C,-20 °C
Storage Comment:	Maintain refrigerated at 2-8 °C for up to 6 months. For long term storage store at -20 °C in small aliquots to prevent freeze-thaw cycles.
Expiry Date:	6 months



Flow Cytometry

Image 1. ASM3A Antibody (C-term) (ABIN651168 and ABIN2840109) flow cytometric analysis of MDA-M cells (right histogram) compared to a negative control cell (left histogram). FITC-conjugated goat-anti-rabbit secondary antibodies were used for the analysis.

Western Blotting

Image 2. Western blot analysis of ASM3A Antibody (C-term) (ABIN651168 and ABIN2840109) in MDA-M cell line lysates (35 µg/lane). ASM3A (arrow) was detected using the purified Pab.

Immunohistochemistry (Paraffin-embedded Sections)

Image 3. ASM3A Antibody (C-term) (ABIN651168 and ABIN2840109) IHC analysis in formalin fixed and paraffin embedded breast carcinoma followed by peroxidase conjugation of the secondary antibody and DAB staining. This data demonstrates the use of the ASM3A Antibody (C-term) for immunohistochemistry. Clinical relevance has not been evaluated.