

Datasheet for ABIN651176

anti-Caspase 3 antibody (Asp175)

6 Images



[Go to Product page](#)

Overview

Quantity:	400 µL
Target:	Caspase 3 (CASP3)
Binding Specificity:	AA 149-179, Asp175
Reactivity:	Human, Rat
Host:	Rabbit
Clonality:	Polyclonal
Conjugate:	This Caspase 3 antibody is un-conjugated
Application:	Western Blotting (WB), Immunohistochemistry (Paraffin-embedded Sections) (IHC (p)), Flow Cytometry (FACS)

Product Details

Immunogen:	This CASP3(Asp175) antibody is generated from rabbits immunized with a KLH conjugated synthetic peptide between 149-179 amino acids from human CASP3(Asp175).
Clone:	RB25834
Isotype:	Ig Fraction
Purification:	This antibody is purified through a protein A column, followed by peptide affinity purification.

Target Details

Target:	Caspase 3 (CASP3)
Alternative Name:	CASP3 (CASP3 Products)

Target Details

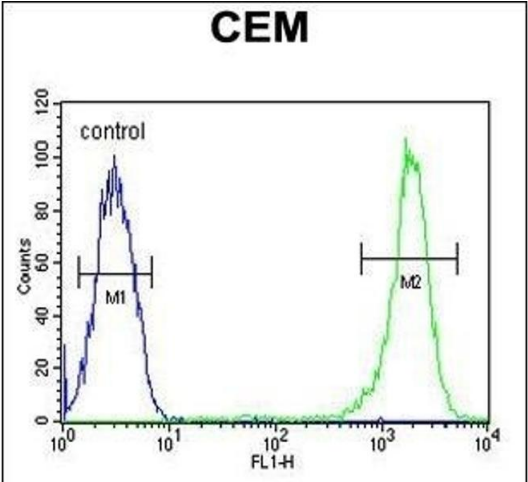
Background:	This gene encodes a protein which is a member of the cysteine-aspartic acid protease (caspase) family. Sequential activation of caspases plays a central role in the execution-phase of cell apoptosis. Caspases exist as inactive proenzymes which undergo proteolytic processing at conserved aspartic residues to produce two subunits, large and small, that dimerize to form the active enzyme. This protein cleaves and activates caspases 6, 7 and 9, and the protein itself is processed by caspases 8, 9 and 10. It is the predominant caspase involved in the cleavage of amyloid-beta 4A precursor protein, which is associated with neuronal death in Alzheimer's disease. Alternative splicing of this gene results in two transcript variants that encode the same protein.
Molecular Weight:	31608
Gene ID:	836
NCBI Accession:	NP_004337 , NP_116786
UniProt:	P42574
Pathways:	Apoptosis , Caspase Cascade in Apoptosis , Sensory Perception of Sound , ER-Nucleus Signaling , Positive Regulation of Endopeptidase Activity , Activated T Cell Proliferation

Application Details

Application Notes:	WB: 1:1000. WB: 1:1000. WB: 1:1000. WB: 1:1000-1:2000. IHC-P: 1:50~100. FC: 1:10~50
Restrictions:	For Research Use only

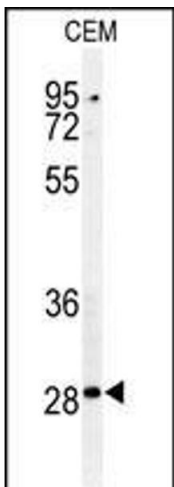
Handling

Format:	Liquid
Buffer:	Purified polyclonal antibody supplied in PBS with 0.09 % (W/V) sodium azide.
Preservative:	Sodium azide
Precaution of Use:	This product contains Sodium azide: a POISONOUS AND HAZARDOUS SUBSTANCE which should be handled by trained staff only.
Storage:	4 °C,-20 °C
Storage Comment:	Maintain refrigerated at 2-8 °C for up to 6 months. For long term storage store at -20 °C in small aliquots to prevent freeze-thaw cycles.
Expiry Date:	6 months



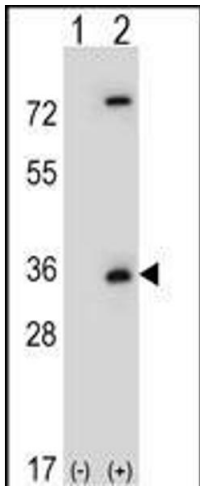
Flow Cytometry

Image 1. CASP3(Asp175) Antibody (ABIN651176 and ABIN2840112) flow cytometric analysis of CEM cells (right histogram) compared to a negative control cell (left histogram). FITC-conjugated goat-anti-rabbit secondary antibodies were used for the analysis.



Western Blotting

Image 2. Western blot analysis of CASP3 (Asp175) Antibody (ABIN651176 and ABIN2840112) in CEM cell line lysates (35 µg/lane). CASP3 (arrow) was detected using the purified Pab.



Western Blotting

Image 3. Western blot analysis of CASP3 (arrow) using rabbit polyclonal CASP3 Antibody (ABIN651176 and ABIN2840112). 293 cell lysates (2 µg/lane) either nontransfected (Lane 1) or transiently transfected (Lane 2) with the CASP3 gene.

Please check the [product details page](#) for more images. Overall 6 images are available for ABIN651176.