

Datasheet for ABIN651177

anti-RAB27B antibody (C-Term)[Go to Product page](#)**2** Images

Overview

Quantity:	400 µL
Target:	RAB27B
Binding Specificity:	AA 186-215, C-Term
Reactivity:	Human
Host:	Rabbit
Clonality:	Polyclonal
Conjugate:	This RAB27B antibody is un-conjugated
Application:	Western Blotting (WB), Flow Cytometry (FACS)

Product Details

Immunogen:	This RAB27B antibody is generated from rabbits immunized with a KLH conjugated synthetic peptide between 186-215 amino acids from the C-terminal region of human RAB27B.
Clone:	RB24873
Isotype:	Ig Fraction
Purification:	This antibody is purified through a protein A column, followed by peptide affinity purification.

Target Details

Target:	RAB27B
Alternative Name:	RAB27B (RAB27B Products)
Background:	RAB27B may be involved in targeting uroplakins to urothelial apical membranes.

Target Details

Molecular Weight:	24608
Gene ID:	5874
NCBI Accession:	NP_004154
UniProt:	O00194

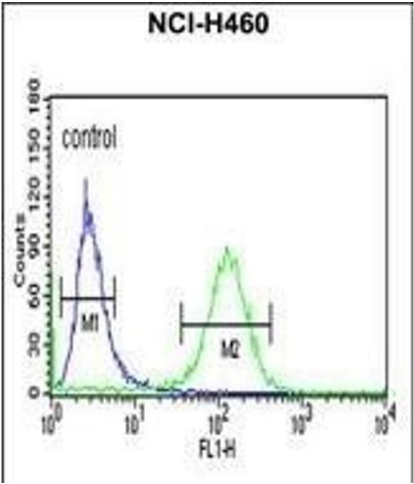
Application Details

Application Notes:	WB: 1:1000. FC: 1:10~50
Restrictions:	For Research Use only

Handling

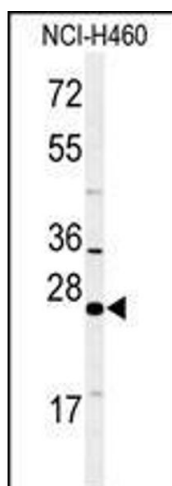
Format:	Liquid
Buffer:	Purified polyclonal antibody supplied in PBS with 0.09 % (W/V) sodium azide.
Preservative:	Sodium azide
Precaution of Use:	This product contains Sodium azide: a POISONOUS AND HAZARDOUS SUBSTANCE which should be handled by trained staff only.
Storage:	4 °C,-20 °C
Storage Comment:	Maintain refrigerated at 2-8 °C for up to 6 months. For long term storage store at -20 °C in small aliquots to prevent freeze-thaw cycles.
Expiry Date:	6 months

Images



Flow Cytometry

Image 1. RAB27B Antibody (C-term) (ABIN651177 and ABIN2840113) flow cytometric analysis of NCI- cells (right histogram) compared to a negative control cell (left histogram). FITC-conjugated goat-anti-rabbit secondary antibodies were used for the analysis.



Western Blotting

Image 2. Western blot analysis of RAB27B Antibody (C-term) (ABIN651177 and ABIN2840113) in NCI- cell line lysates (35 µg/lane). RAB27B (arrow) was detected using the purified Pab.