

Datasheet for ABIN651184
anti-Keratin 35 antibody (C-Term)[Go to Product page](#)

2 Images

Overview

Quantity:	400 µL
Target:	Keratin 35 (KRT35)
Binding Specificity:	AA 352-380, C-Term
Reactivity:	Human
Host:	Rabbit
Clonality:	Polyclonal
Conjugate:	This Keratin 35 antibody is un-conjugated
Application:	Western Blotting (WB), Immunohistochemistry (Paraffin-embedded Sections) (IHC (p))

Product Details

Immunogen:	This KRT35 antibody is generated from rabbits immunized with a KLH conjugated synthetic peptide between 352-380 amino acids from the C-terminal region of human KRT35.
Clone:	RB25001
Isotype:	Ig Fraction
Purification:	This antibody is purified through a protein A column, followed by peptide affinity purification.

Target Details

Target:	Keratin 35 (KRT35)
Alternative Name:	KRT35 (KRT35 Products)
Background:	KRT35 is a member of the keratin gene family. This type I hair keratin is an acidic protein which

Target Details

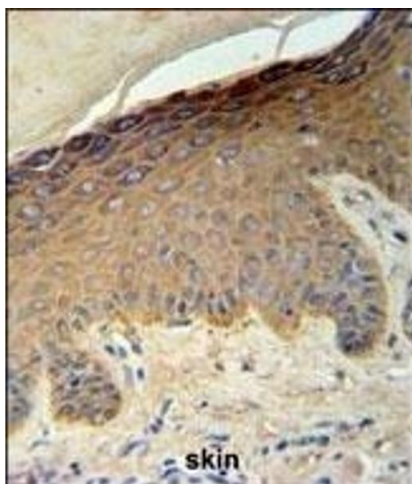
	heterodimerizes with type II keratins to form hair and nails. The type I hair keratins are clustered in a region of chromosome 17q12-q21 and have the same direction of transcription.
Molecular Weight:	50361
Gene ID:	3886
NCBI Accession:	NP_002271
UniProt:	Q92764

Application Details

Application Notes:	WB: 1:1000. IHC-P: 1:50~100
Restrictions:	For Research Use only

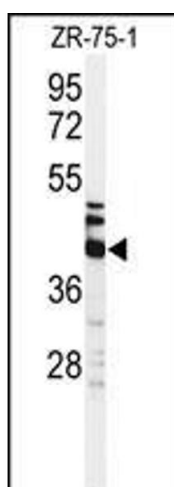
Handling

Format:	Liquid
Buffer:	Purified polyclonal antibody supplied in PBS with 0.09 % (W/V) sodium azide.
Preservative:	Sodium azide
Precaution of Use:	This product contains Sodium azide: a POISONOUS AND HAZARDOUS SUBSTANCE which should be handled by trained staff only.
Storage:	4 °C,-20 °C
Storage Comment:	Maintain refrigerated at 2-8 °C for up to 6 months. For long term storage store at -20 °C in small aliquots to prevent freeze-thaw cycles.
Expiry Date:	6 months



Immunohistochemistry (Paraffin-embedded Sections)

Image 1. KRT35 Antibody (C-term) (ABIN651184 and ABIN2840116) IHC analysis in formalin fixed and paraffin embedded skin carcinoma followed by peroxidase conjugation of the secondary antibody and DAB staining. This data demonstrates the use of the KRT35 Antibody (C-term) for immunohistochemistry. Clinical relevance has not been evaluated.



Western Blotting

Image 2. Western blot analysis of KRT35 Antibody (C-term) (ABIN651184 and ABIN2840116) in ZR-75-1 cell line lysates (35 µg/lane). KRT35 (arrow) was detected using the purified Pab.